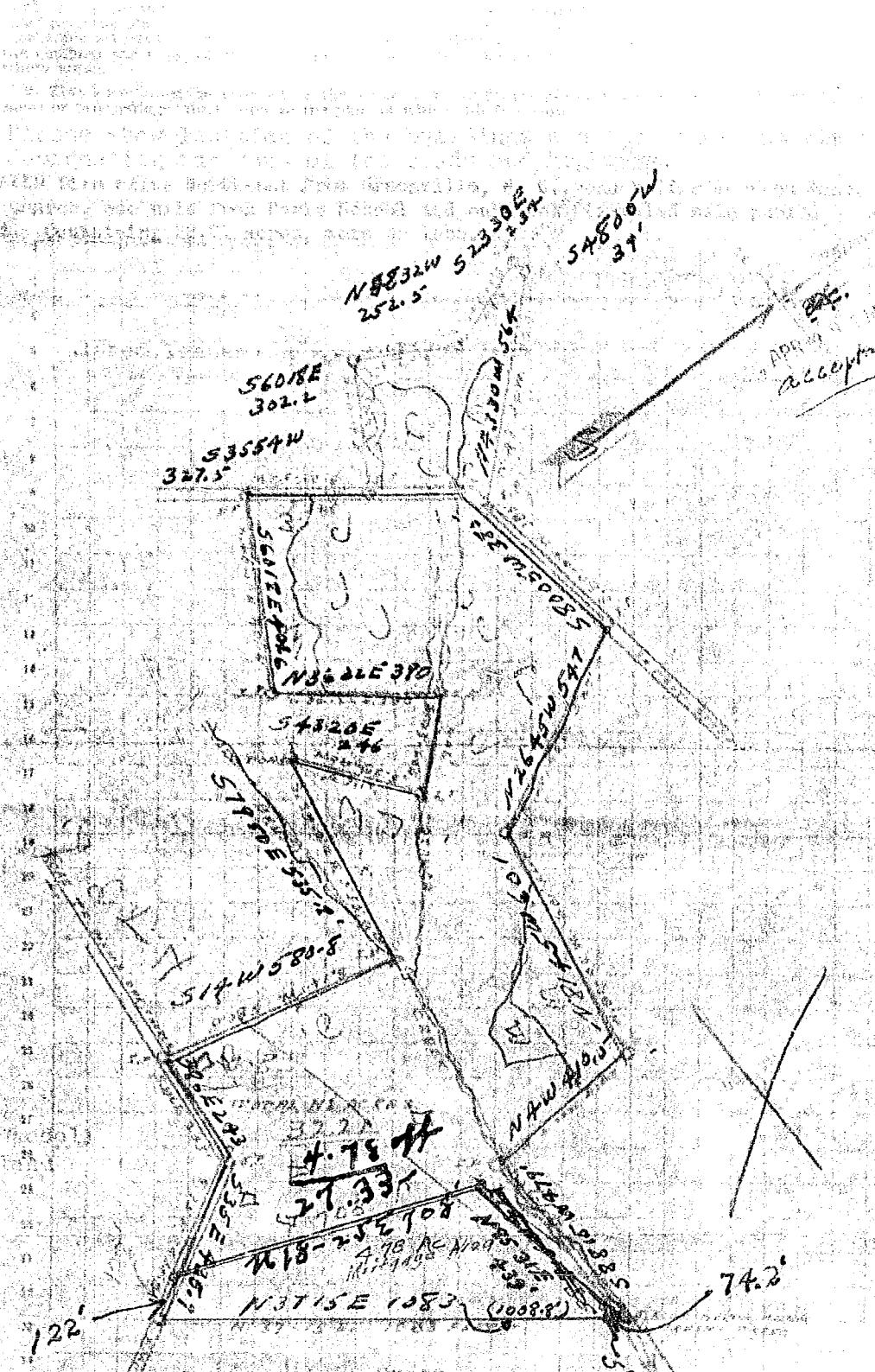


#10094

10/18



APPROXIMATELY ACCEPTABLE

Vertical text on the left side of the page, likely a survey description or notes. The text is partially obscured and difficult to read due to the image quality and orientation. It appears to contain details about the survey process, possibly mentioning the date and the name of the surveyor or client.

THEORY: We require a 'composite' to be made of the above plot. This plot must show the original data, show the calculation for the perimeter, and show the area. Without composite plots will be used without showing the surveying computations. In closing, we will provide a detailed report on the work done and the results of the survey. The survey will be completed by the end of the month. The survey will be completed by the end of the month.