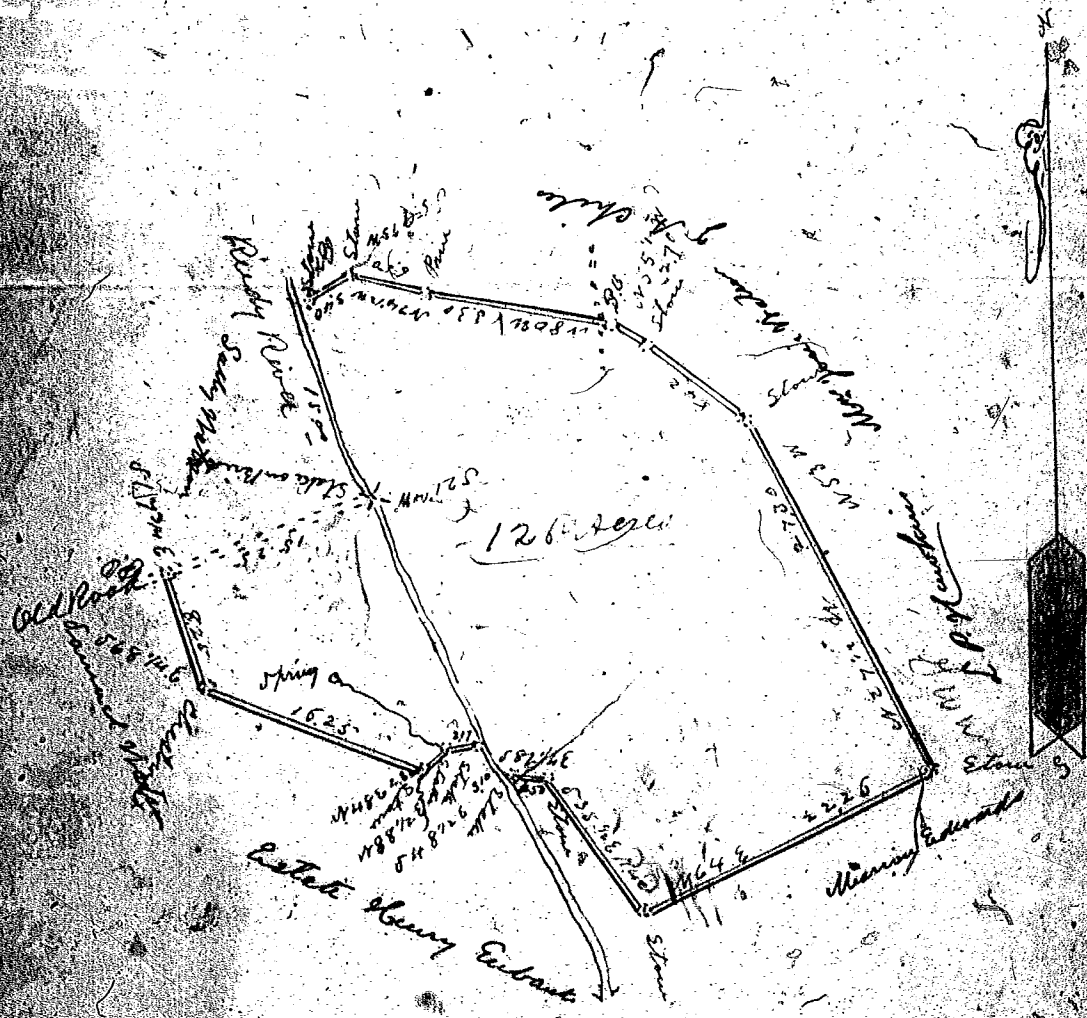


#154139 - John N Hodgson

Scaled at Ten chains per inch

FEB 20 1908



South Carolina }
 Greenville County } By request of Edward Watson
 I have surveyed and laid off to W. B. Hodgson
 the above tract of One hundred and twenty six
 (126) Acres of Land. Situate in the State and County
 aforesaid on Ruddy River, about 1.0 mile from
 Greenville S. C. and hath such shape, marks, and
 boundaries as shown by the above plat.

Surveyed May 9th 1905

Wm. A. Hudson
D.W.