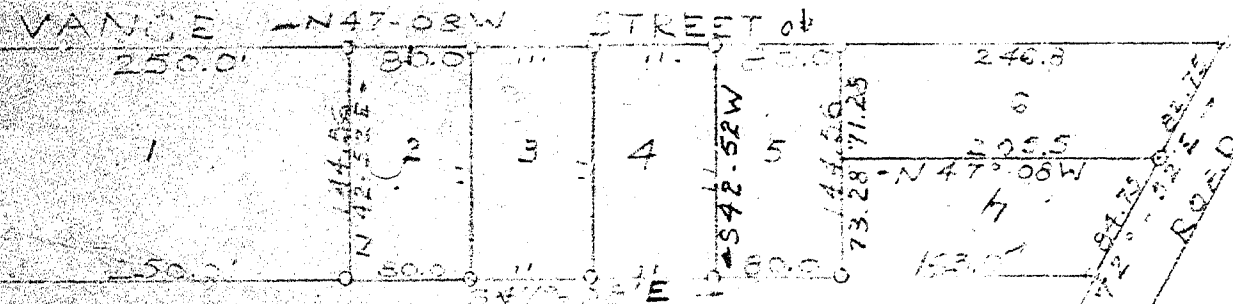


R.O.W. LINE
 SUPER (225)
 HIG. WY.
 R.O.W. LINE
 542.52W
 147.56W
 To Sp Hwy.



C. SPENCER WILLINGHAM ET. AL.
 GREENVILLE COUNTY SO. CAR.
 1" = 100'
 JUNE 1949
 J. McRichardson - Reg. L.S.

Iron Pins at all corners

MAY 9 1951
 10869

Recorded May 9th. 1951 at 2:24 P. M. #10869