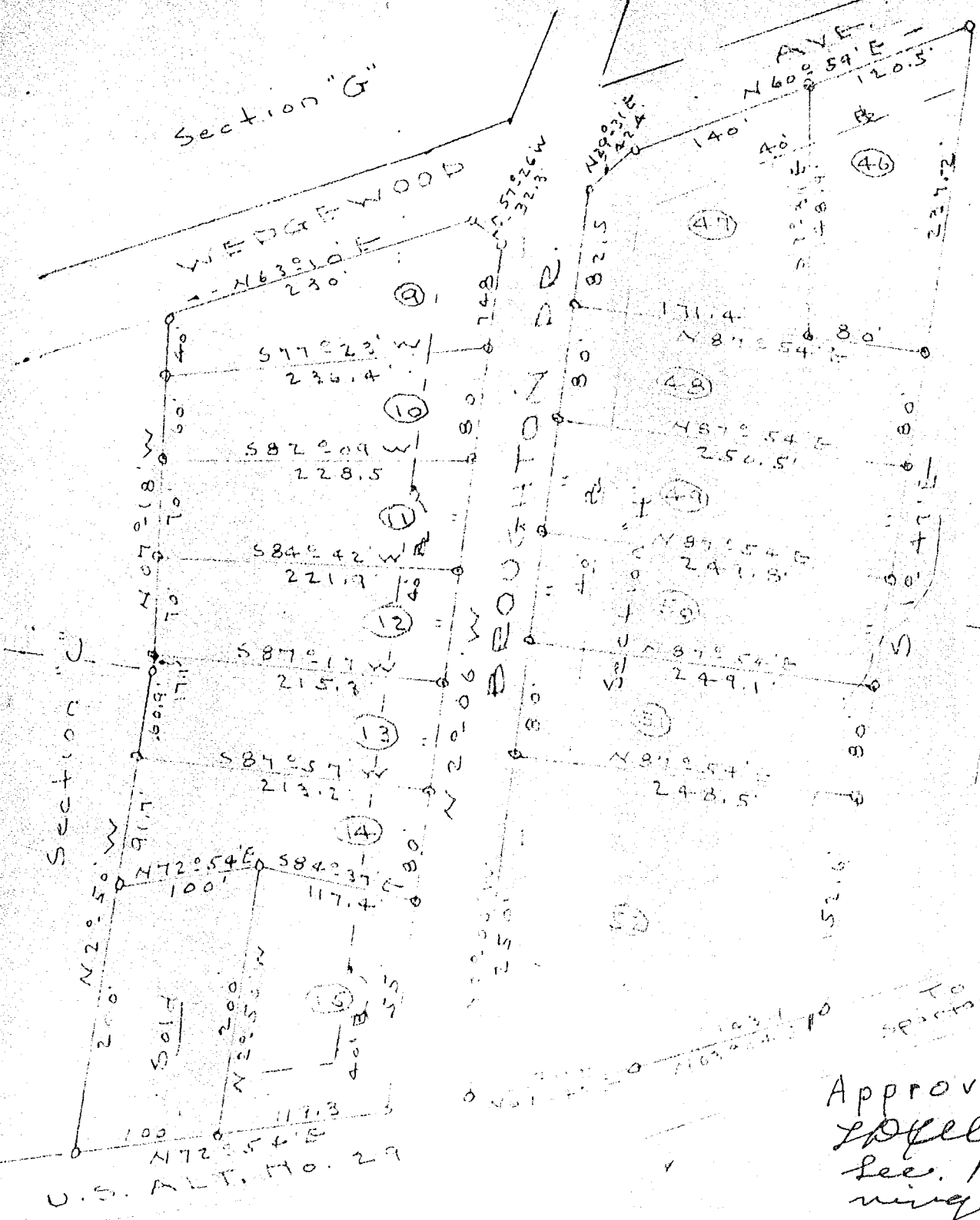


Section "G"

WEDGEWOOD

AVE. N 60° 54' E - 120.5'



Approved
L. Ellison
Sec. Plan.
ning Com.

PARTIAL REVISION
CITY OF ST. LOUIS
Greenfield - 51
Lots revised - 45 thru 50, Section J
A 51 thru 55 - Section J
S 51 thru 55 - Feb. 20-51

Recorded February 27th, 1951 at
11:00 A. M. #4671

d.c. Hill - L.S. 605