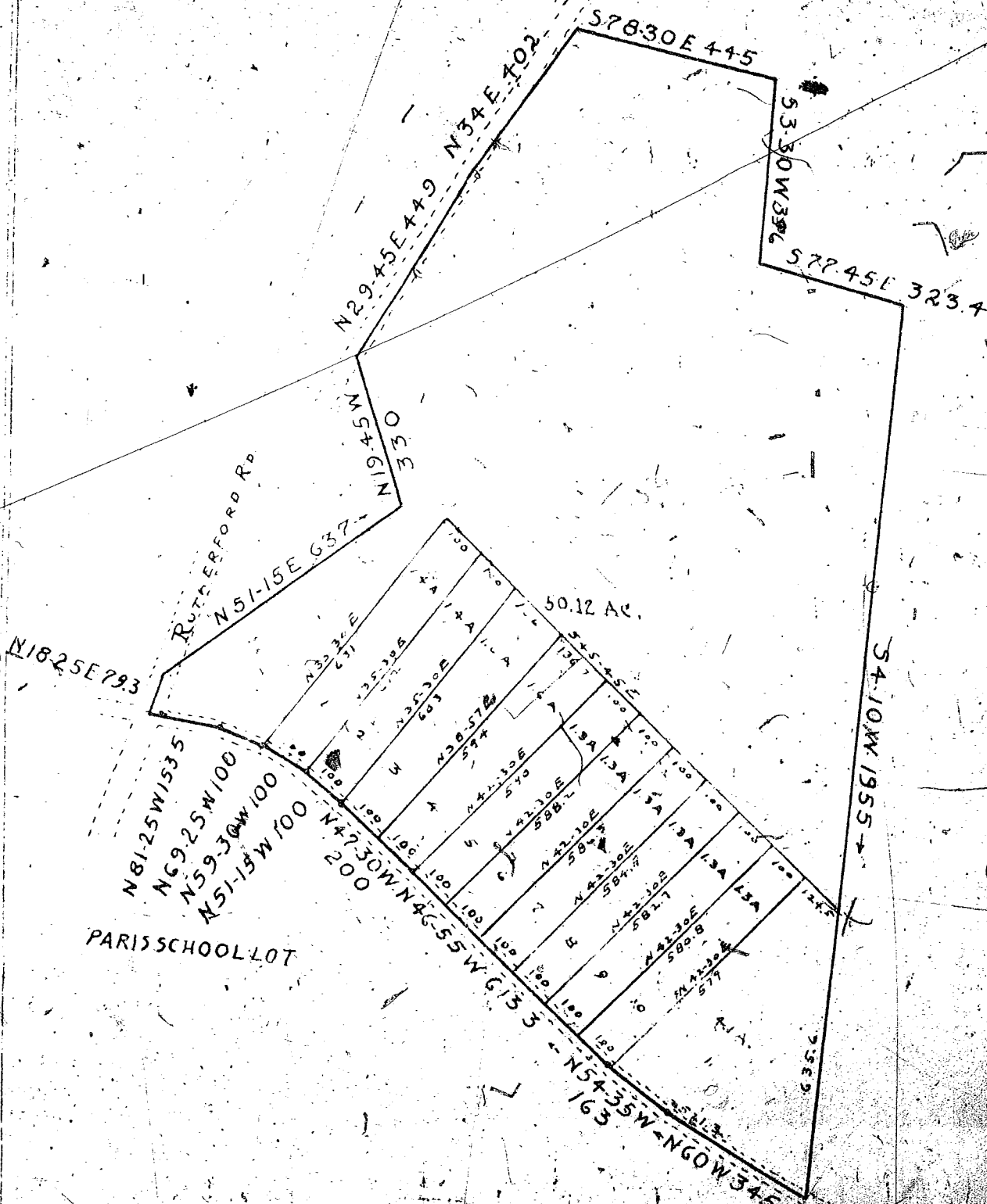


G. M. FURMAN, JR.
 CIVIL ENGINEER
 GREENVILLE, S. C.
 OFFICE: 11 W. COURT STREET
 PHONES: OFFICE 1506
 RES. 2003

PROPERTY
 OF
 T. W. BUTLER

HIGHWAYS
 SEWERS
 STREETS
 SIDEWALKS
 DRAINAGE
 LAND SURVEYS
 SUB-DIVISIONS
 TERRACES



Scale 1" = 300

Date Sep 20 1933

I hereby certify that this is a true and accurate
 survey of the above described property.
 G. M. Furman, Jr.