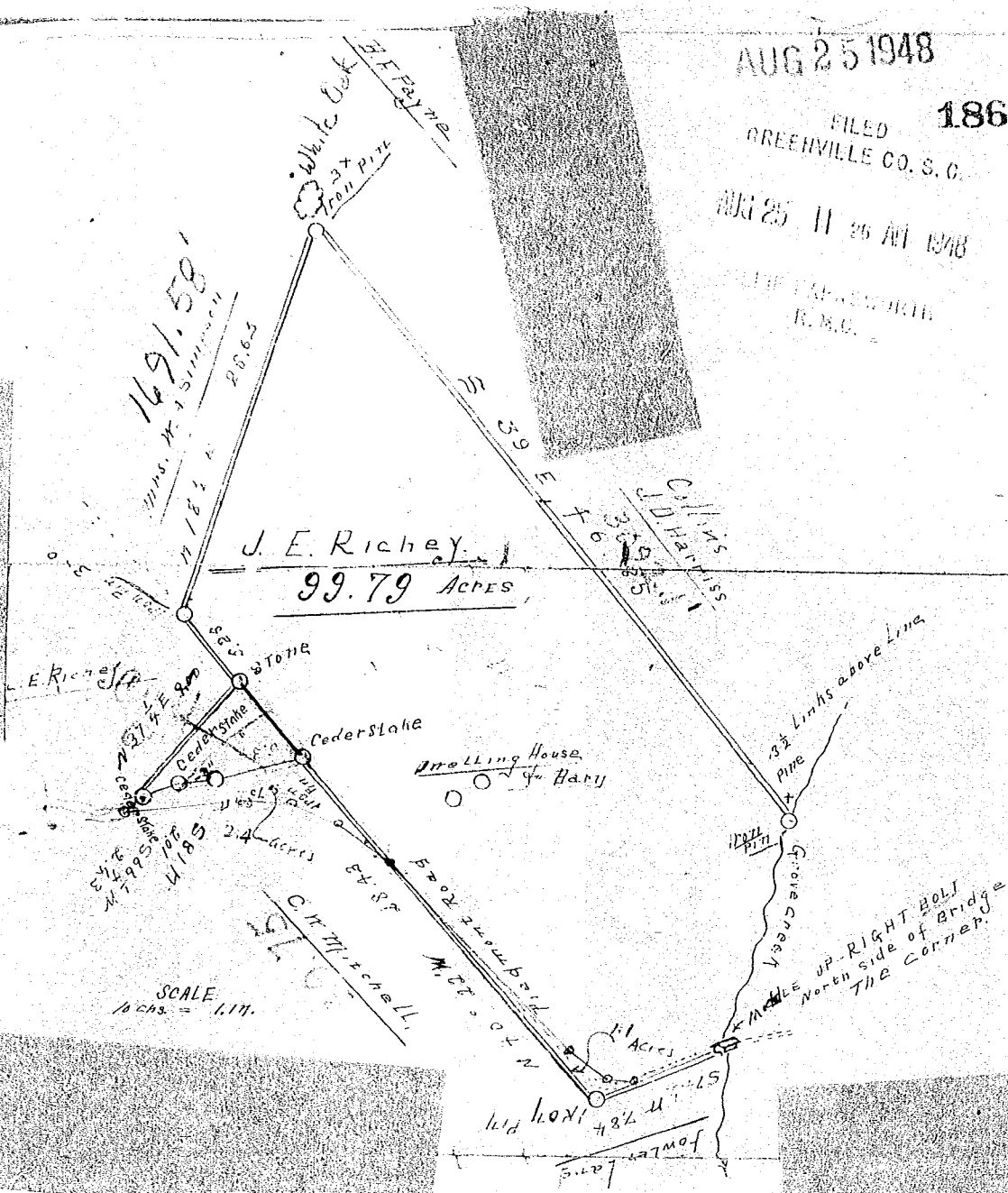


AUG 25 1948

FILED 18671
GREENVILLE CO. S. C.

AUG 25 11 26 AM 1948

THE TAPSCOTT
R.M.C.



STATE OF SOUTH CAROLINA

GREENVILLE COUNTY, Grove Township.

THIS PLAT REPRESENTS A TRACT OF LAND BELONGING TO J.E. RICHEY AND CONTAINS NINETY NINE AND SEVENTY-NINE ONE-HUNDRETHS (99.79) ACRES; IT IS SITUATED AS ABOVE WRITTEN AND ON WATERS OF GROVE CREEK; IT HAS SUCH FORM, MARKS, METES AND BOUNDS AS PLATTED.

SEPTEMBER 14, 1921.

B. J. Wingard
SURVEYOR.

Recorded August 25th, 1948 at 11:26 A. M. #18671