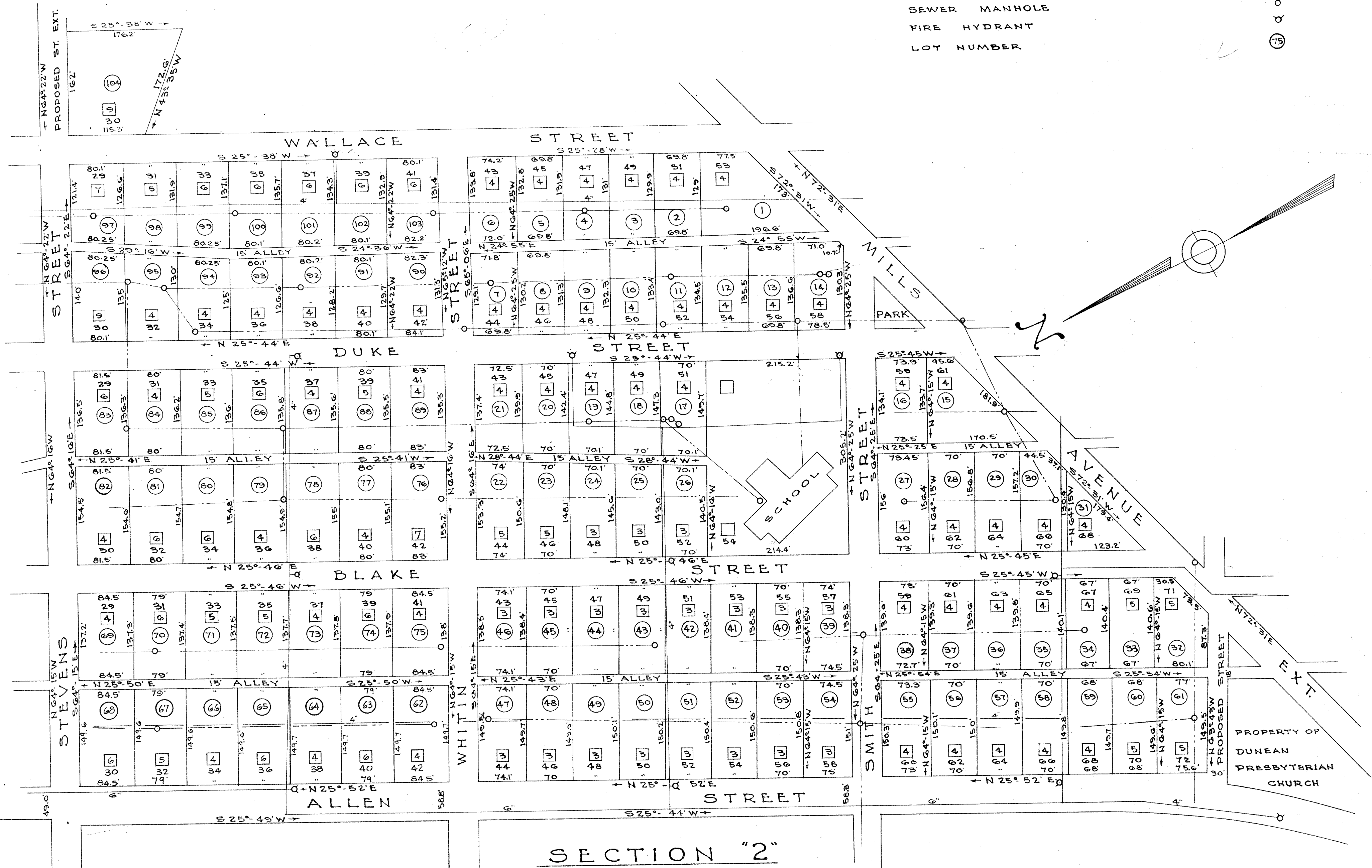


LEGEND

- HOUSE & NO. OF ROOMS 5
- STREET NUMBERS 2
- SANITARY SEWER LINE
- WATER LINE
- SEWER MANHOLE o
- FIRE HYDRANT o
- LOT NUMBER 13



NOTE
 PINS AT ALL PROPERTY
 EDGES
 STREETS PAVED AND WITH
 WALKS, CURB & GUTTER.
 UTILITY LINES & STREET RIGHT-OF-WAY
 AS ESTABLISHED - ONE FOOT BACK
 EXISTING SIDEWALK.
 MARKS ON THIS MAP ARE SHOWN IN
 APPROXIMATE LOCATION.

SECTION "2"
SUBDIVISION
 FOR
DUNEAN MILLS
GREENVILLE, S.C.

PICKELL & PICKELL ENGINEERS • GREENVILLE, S.C.

SCALE: 1"=100' DATED: JUNE 15, 1948
 REVISED: JUNE 23-1948

#18589 Filed This 24 day of Aug 1948
 And Recorded in Vol. 1 Page 131 at
Cliff Starnes
 Register Mesne Conveyance Greenville County, S.C.

AUG 24 1948

18589