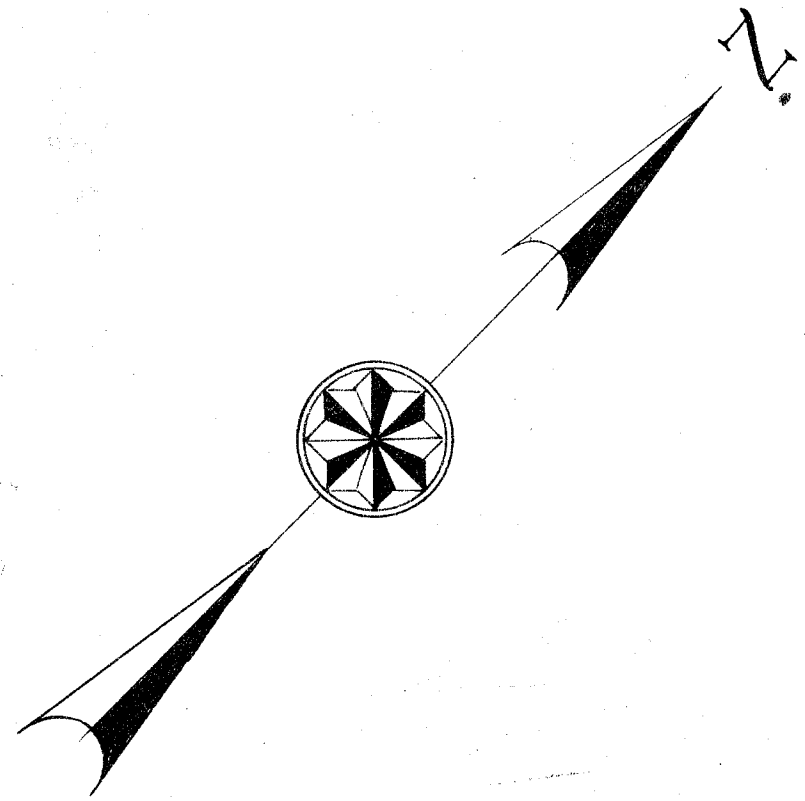
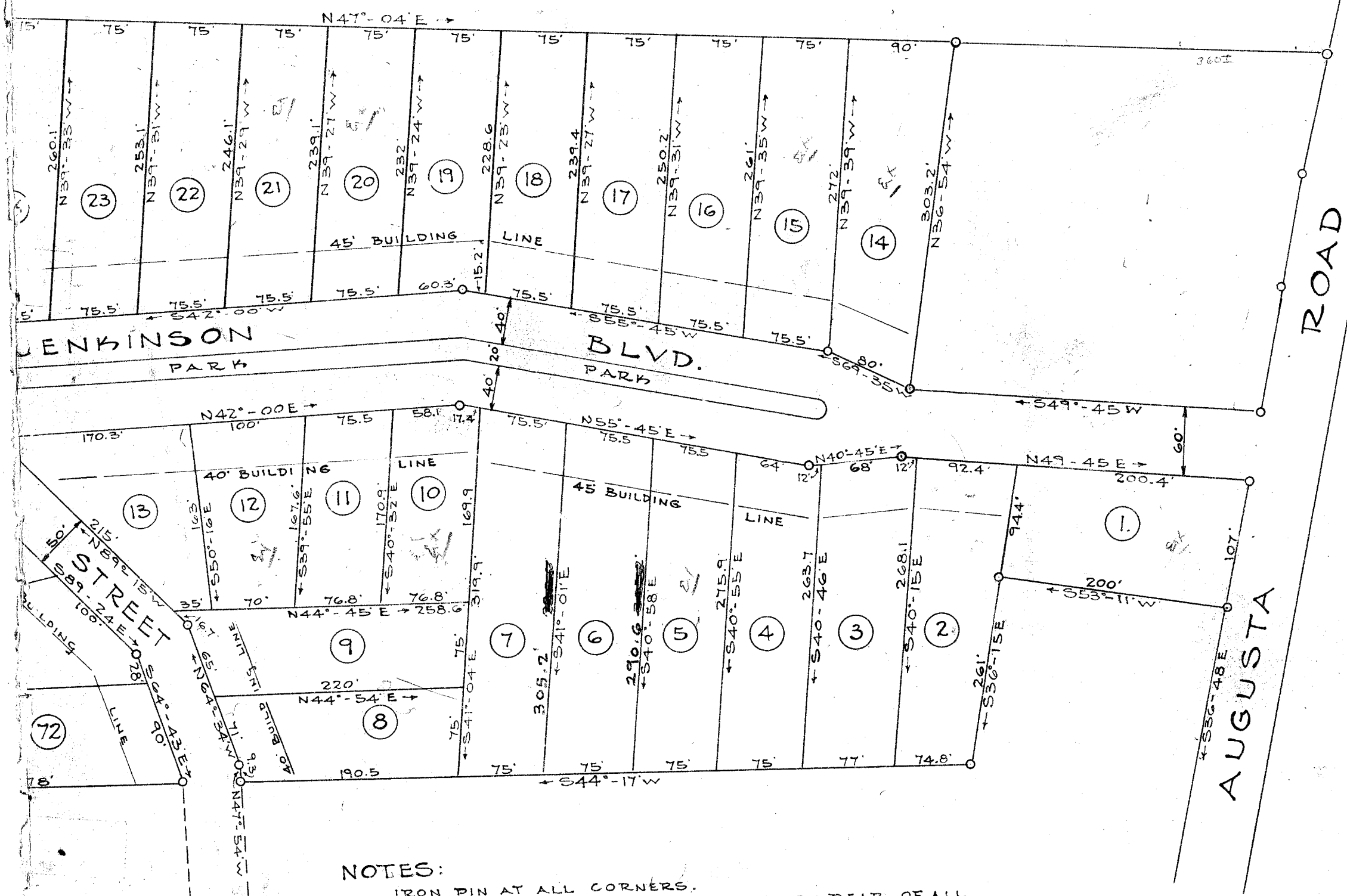


121



LANE



NOTES:
 IRON PIN AT ALL CORNERS.
 FIVE FOOT EASEMENT RESERVED ON REAR OF ALL
 LOTS FOR UTILITY SERVICES.
 LOTS 15-10-14-15-12 ARE SET ASIDE BY OWNERS
 FOR SINGLE OR MULTIPLE DWELLINGS.

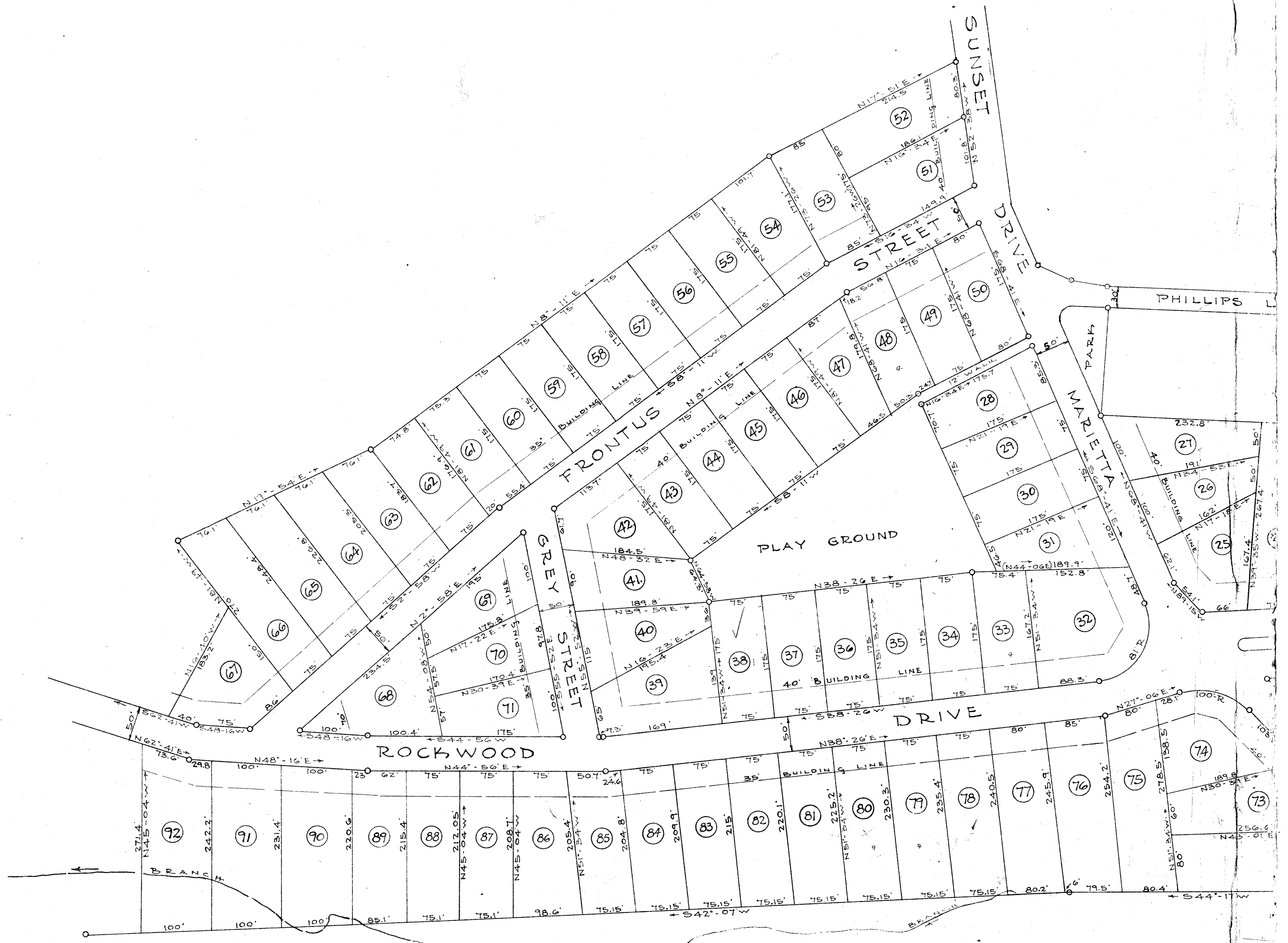
750
 90
 232.8
 1172.8

See Pages 165 167

1893 Filed This 28 day of Aug 1893
 And Recorded in Vol. 5 Page 121 at
 Ollie Farnsworth
 Register Mesne Conveyance Greenville County, S. C.

SECTION "A"

120



ROCKWOOD PARK

A SUBDIVISION LOCATED IN THE CITY OF GREENVILLE S.C.

PICKELL & PICKELL - ENGINEERS - GREENVILLE S.C.

SCALE - 1" = 100' ... DATE - AUG. 24, 1948