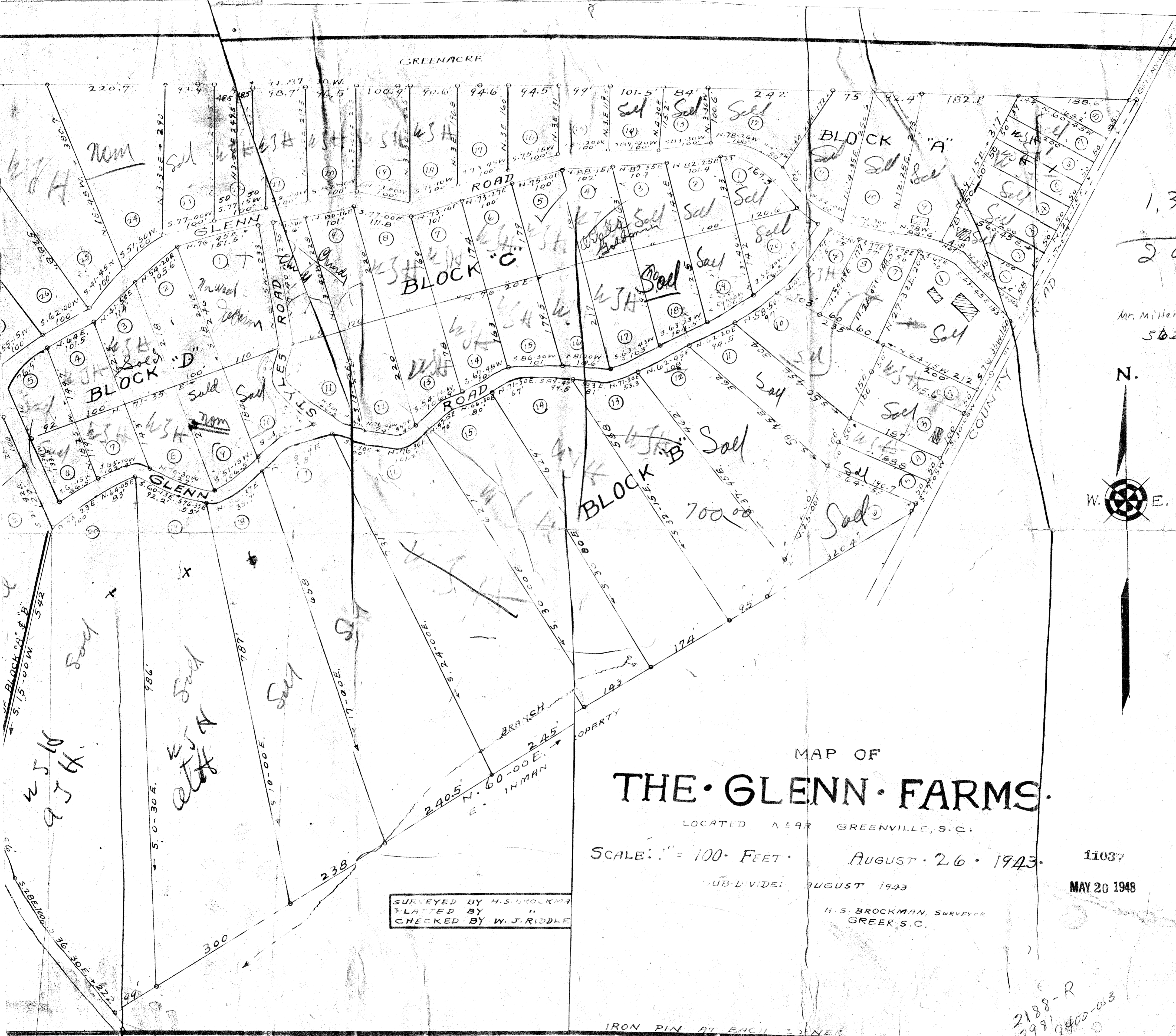


BLOCK "A"		ACRES
NO. 1		0.1
" 2		0.3
" 3		0.3
" 4		0.3
" 5		0.3
" 6		0.3
" 7		0.3
" 8		0.6
" 9		1.7
" 10		0.8
" 11		0.3
" 12		0.3
" 13		0.1
" 14		0.1
" 15		0.2
" 16		0.2
" 17		0.4
" 18		0.4
" 19		0.3
" 20		0.5
" 21		5.2
" 22		5.5
" 23		6.1
" 24		1.5
" 25		5
" 26		2.2
" 27		3
" 28		4.7
" 29		2.6
" 30		2.2

BLOCK "B"		ACRES
NO. 1		0.70
" 2		0.23
" 3		0.3
" 4		0.22
" 5		0.22
" 6		0.63
" 7		0.26
" 8		0.24
" 9		0.12
" 10		0.73
" 11		0.70
" 12		1.36
" 13		1.61
" 14		2.23
" 15		2.15
" 16		3.12
" 17		3.35
" 18		3.03
" 19		4.00
" 20		5.00

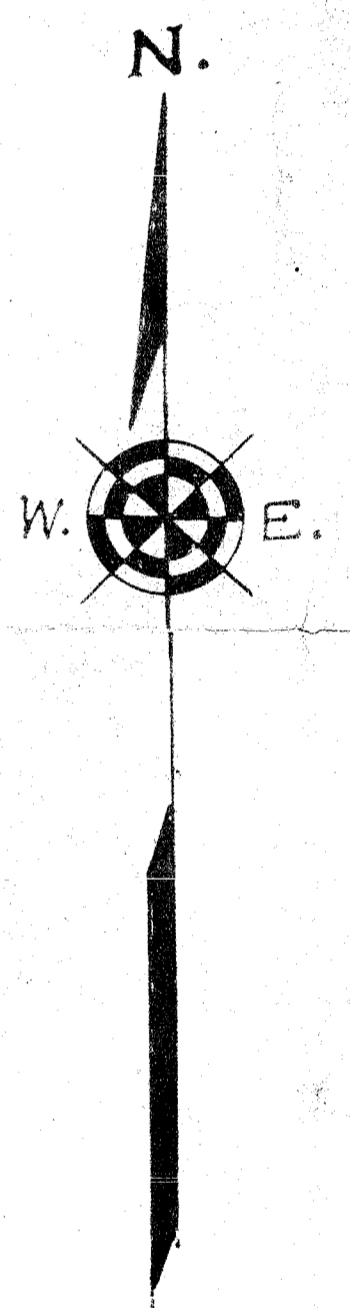
BLOCK "C"		ACRES
NO. 1		0.15
" 2		0.12
" 3		0.15
" 4		0.10
" 5		0.12
" 6		0.11
" 7		0.39
" 8		0.45
" 9		0.32
" 10		0.48
" 11		0.48
" 12		0.51
" 13		0.41
" 14		0.31
" 15		0.39
" 16		0.46
" 17		0.47
" 18		0.42
" 19		0.36
" 20		0.32

BLOCK "D"		ACRES
NO. 1		0.72
" 2		0.53
" 3		0.44
" 4		0.30
" 5		0.29
" 6		0.29
" 7		0.21
" 8		0.41
" 9		0.4
" 10		0.3



1.36
65
20.1

Mr. Miller
5623-M



MAP OF
THE · GLENN · FARMS ·

LOCATED NEAR GREENVILLE, S. C.

SCALE: 1" = 100 FEET · AUGUST · 26 · 1943 ·

SUB-DIVIDED AUGUST 1943

11037

MAY 20 1948

SURVEYED BY H. S. BROCKMAN
PLATTED BY " "
CHECKED BY W. J. RIDDLE

H. S. BROCKMAN, SURVEYOR
GREER, S. C.

IRON PIN AT EACH CORNER

2188-R
2981 7400-053