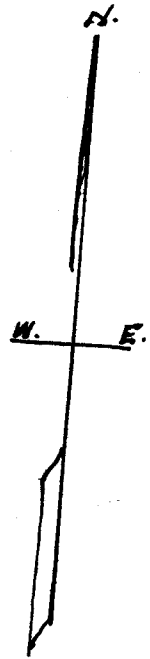
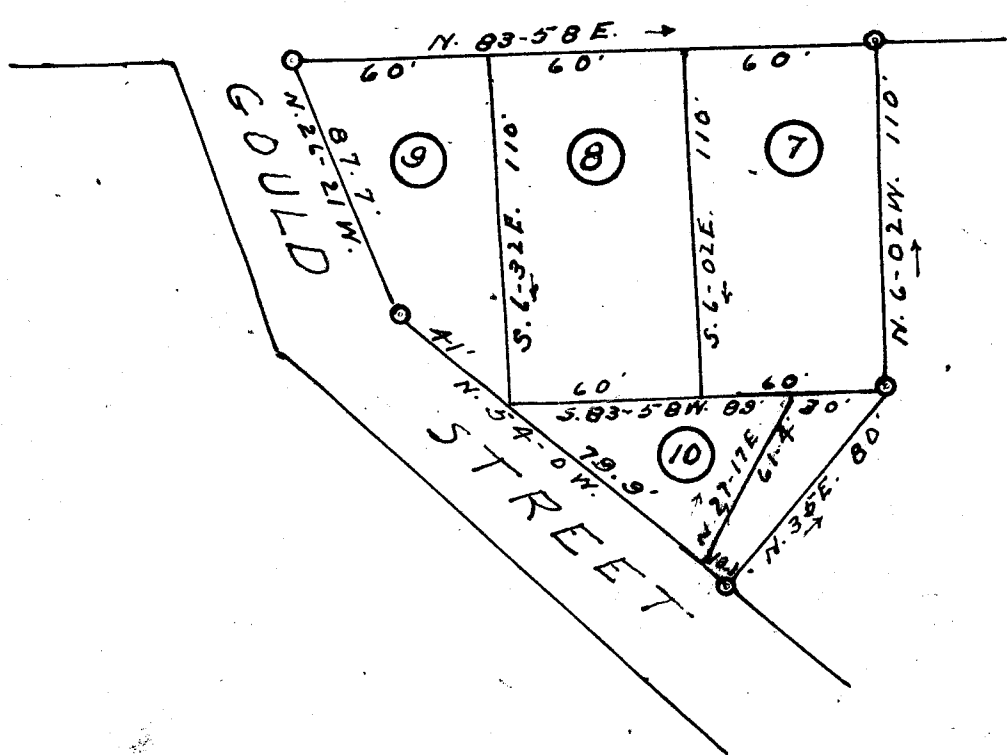


PARIS MOUNTAIN AVE.



REVISED PART OF LOTS NO'S
 7-8-9 and 10 - ETHEL V. PERRY EST.
 SEE PLAT BOOK 8, PAGE 33
 GREENVILLE COUNTY - S.C.
 SCALE 1" = 60' ----- JULY, 1947
 W. J. Riddle - surveyor