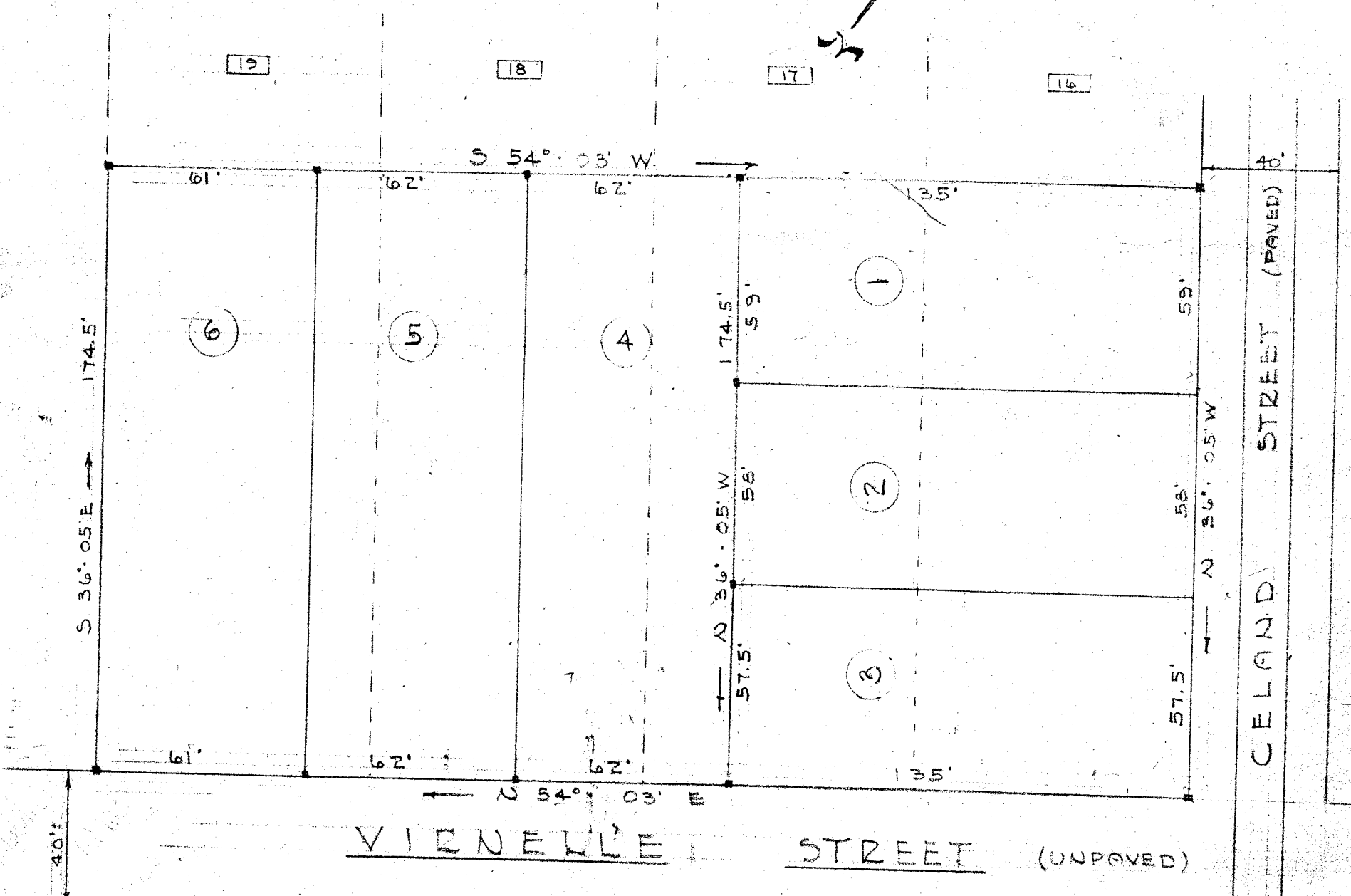


NOTE: THIS PROPERTY FORMERLY LOTS NOS. 12, 13, 14, 15 OF RACHAEL J. CELY PROPERTY. BROKEN LINES SHOW ORIGINAL LOT LINES.



RESUBDIVISION FOR
 CENTRAL REALTY CORPORATION
 GREENVILLE, S.C.
 PICKELL & PICKELL ENGINEERS
 GREENVILLE, S.C.

SCALE: 1" = 40'

DATE: OCT. 17, 1946

R-35
 OCT 28 1946
 18205

#18205 Filed This 28 day of Oct 1946
 And Recorded in Vol. D Page 35 at M.
 Ollie Jarnsworth
 Register Mesne Conveyance Greenville County, S.C.

Ollie Jarnsworth