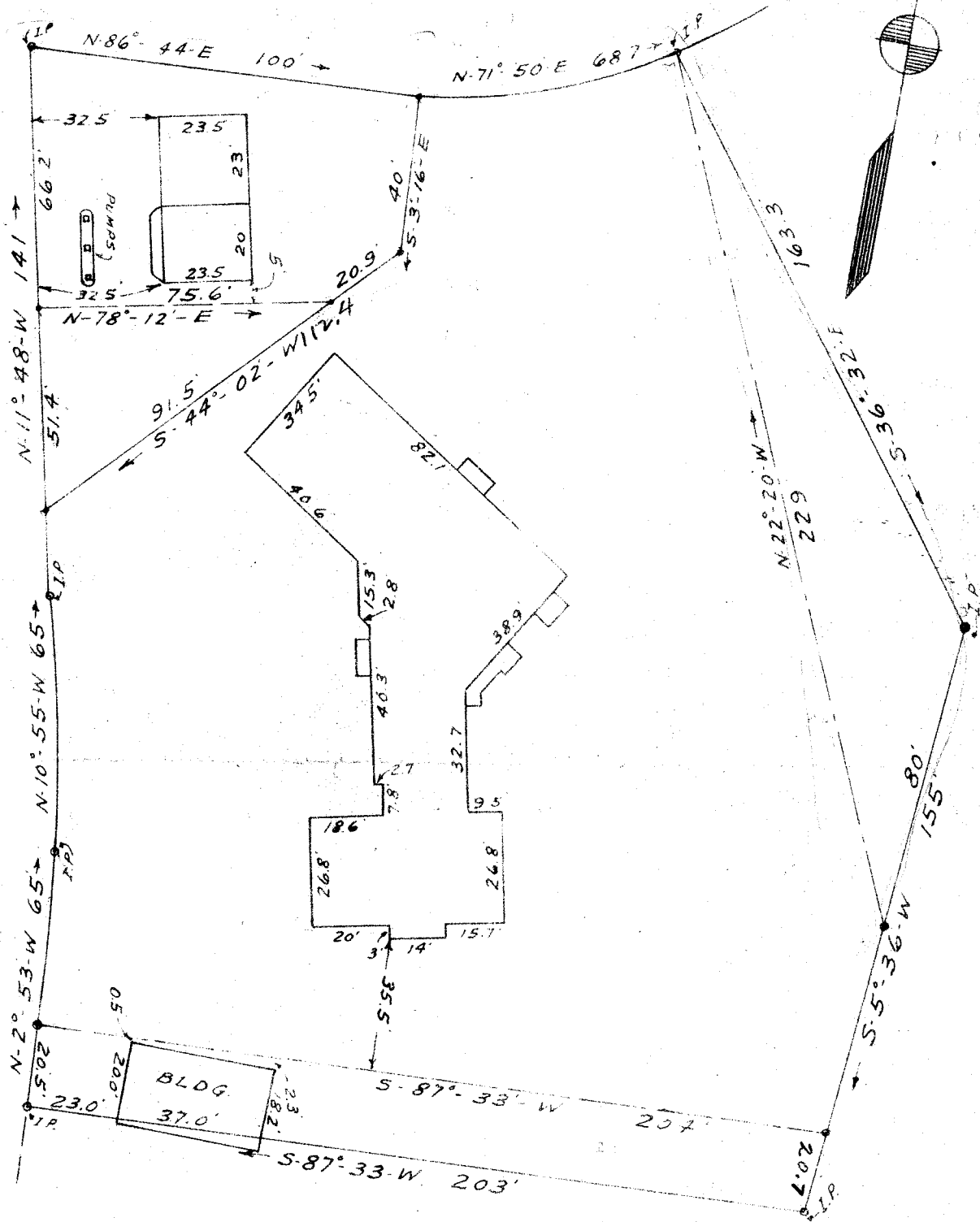


UNIVERSITY RIDGE

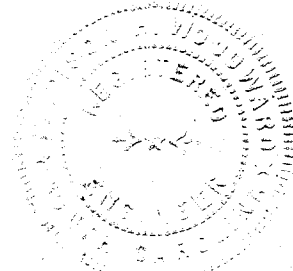
CLEVELAND STREET



PROPERTY OF  
 R. M. CAINE & R. O. TUTEN  
 CLEVELAND STREET  
 GREENVILLE S. C.

SCALE 1 INCH = 40 FEET. APRIL, 1938

NOTE: AMENDMENTS TO PLAT  
 MADE SEPT 5, 1941 BY R. E. DALTON, R. E.  
 AMENDMENTS TO PLAT  
 MADE JUNE 24, 1946 BY M. H. WOODWARD, R. E. 490



#15326  
 and recorded in vol. 10 of Sept 46  
 at  
 Ollie Furman  
 Register Greenville County, S. C.