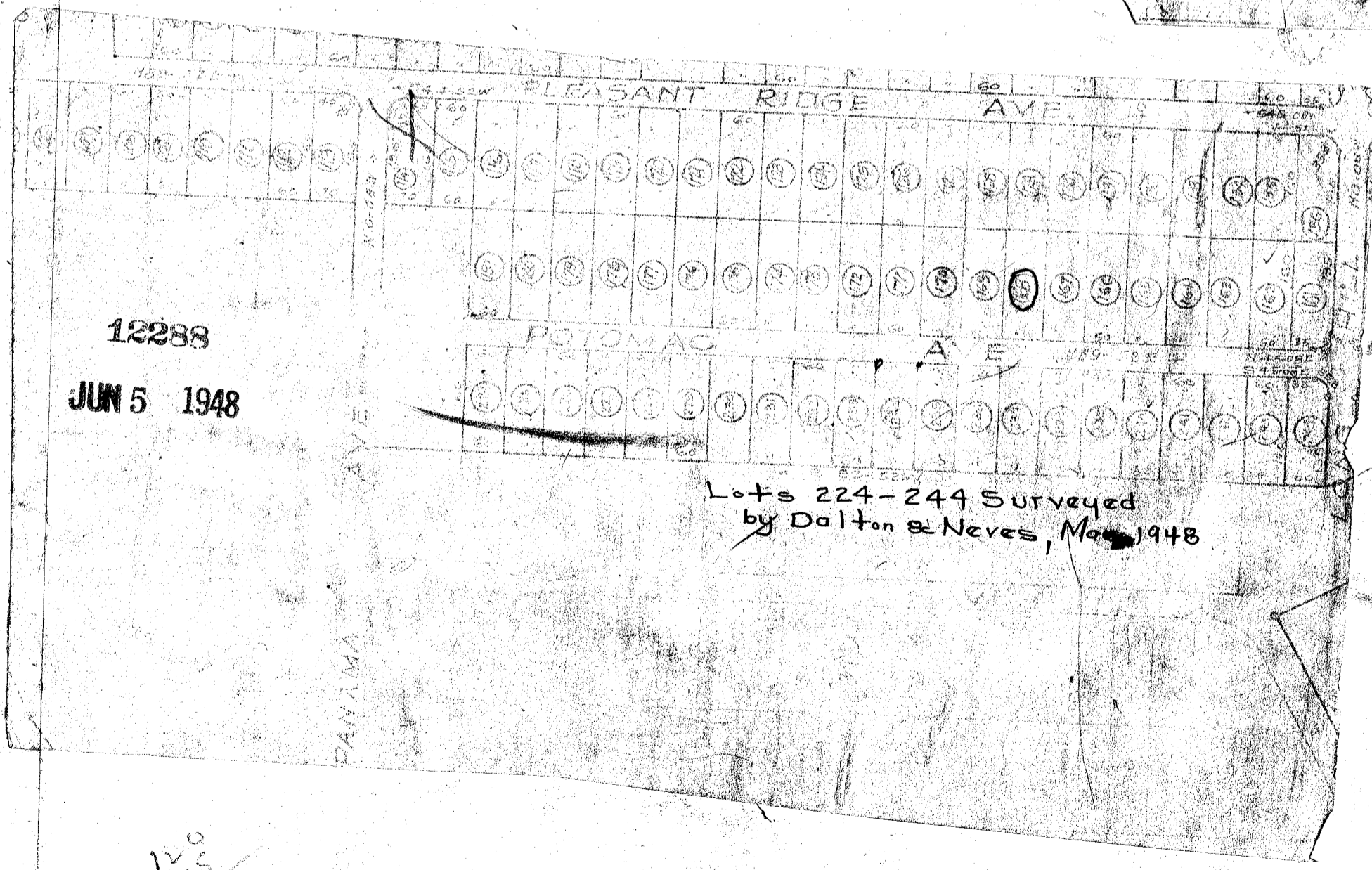
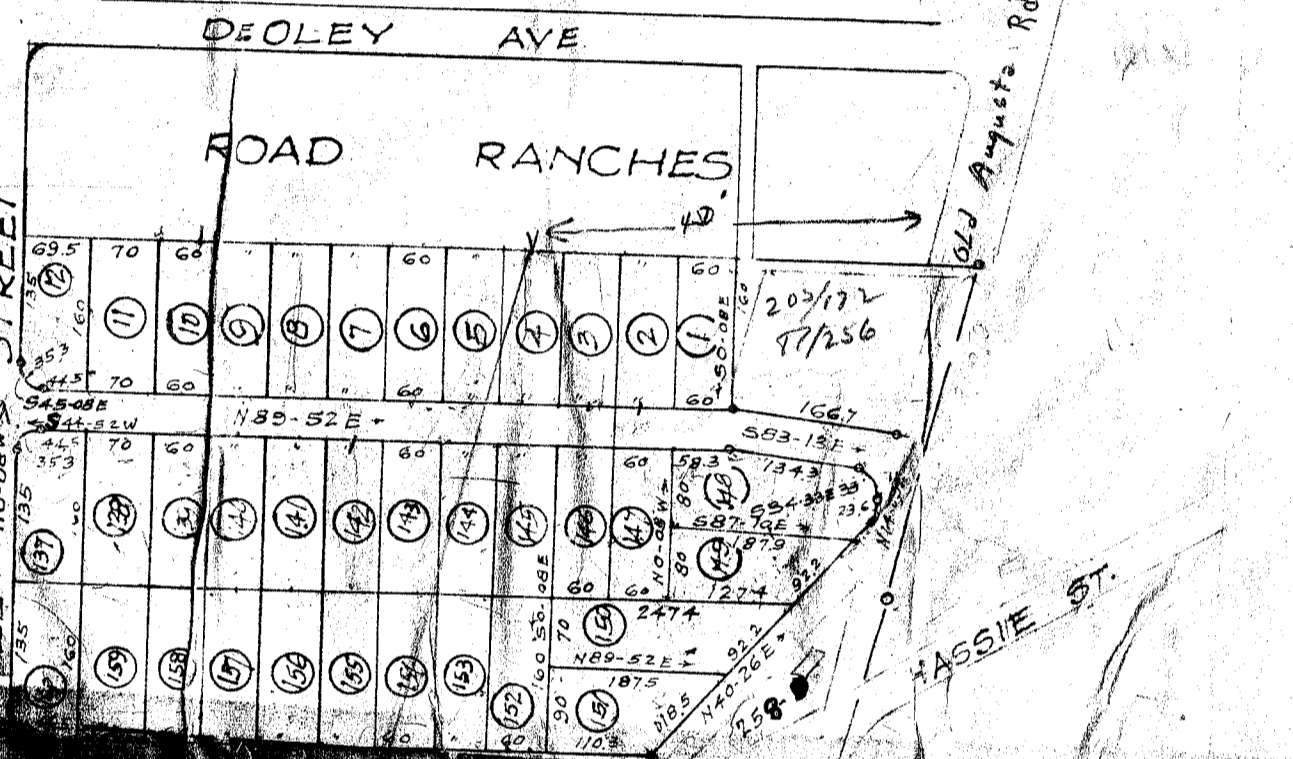
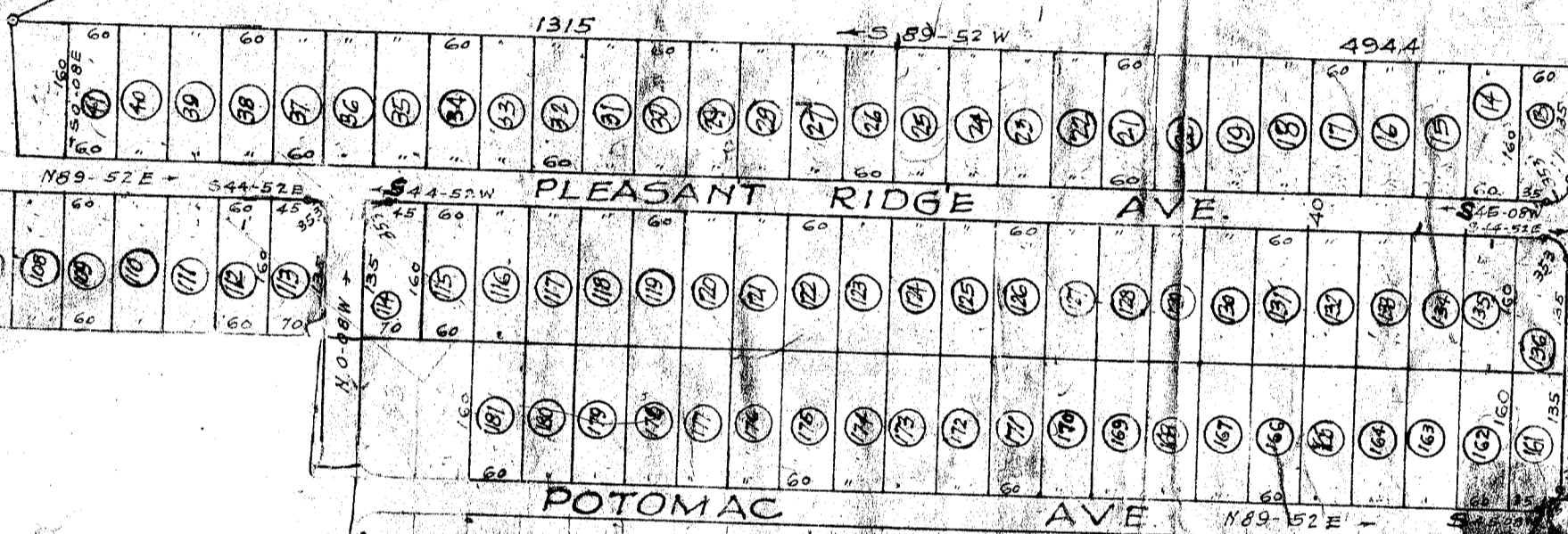
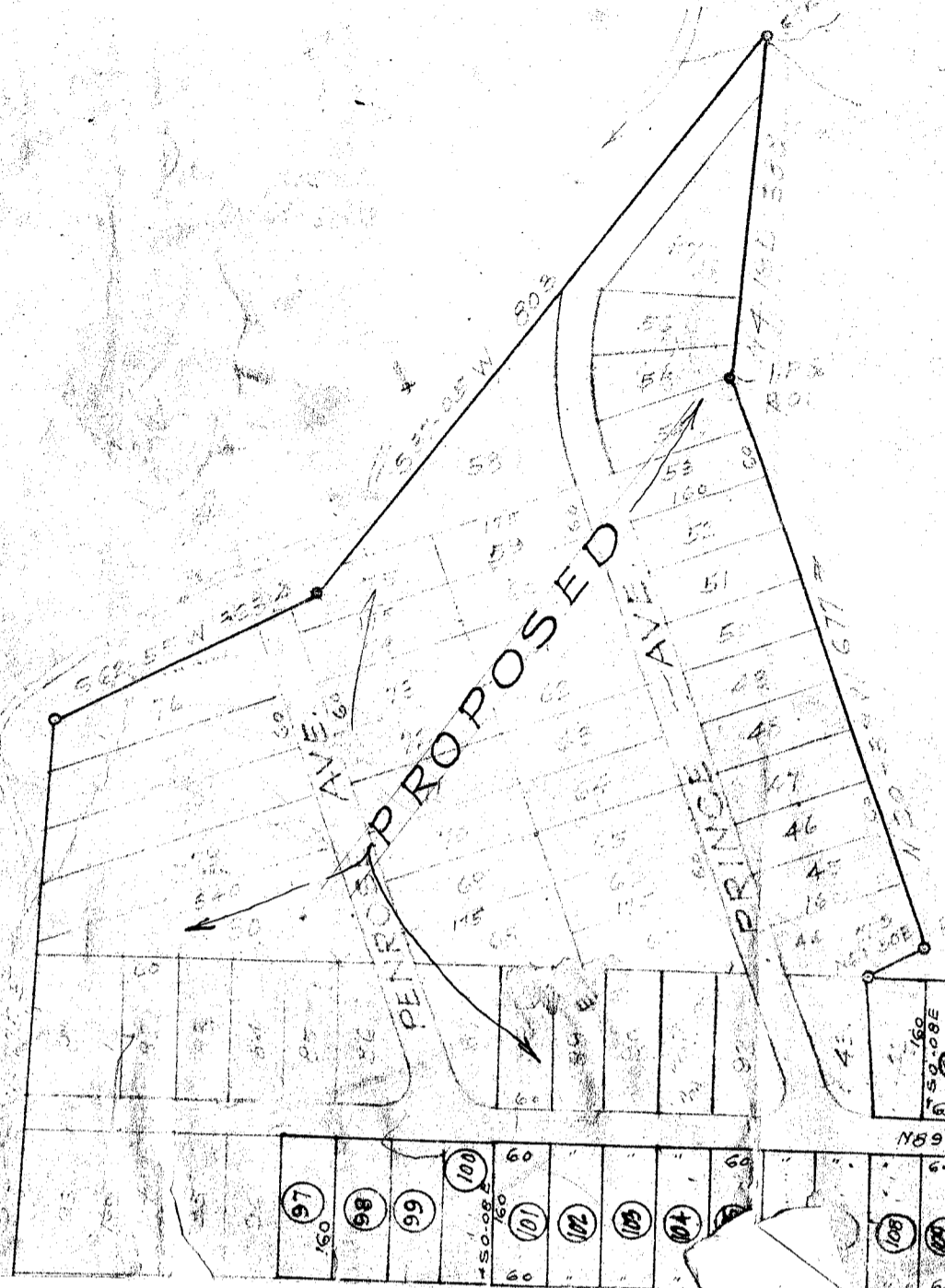


PLEASANT VALLEY (Section #1)
GREENVILLE, SOUTH CAROLINA
Scale 1" equal 200' April 1946

Traxler Real Estate Co.
Exclusive-Selling Agents
Dalton & Neves

17289 Filed This 12 day of Oct 1946
And Recorded in Vol. P. Page 93 at M.
Ollie Jamnawith
Register of Deeds Greenville County, S.C.



12288
JUN 5 1948

Lots 224-244 Surveyed
by Dalton & Neves, May 1948

540 60
35 12
35 120
61060
220
75
750

201 80
12 210
30 100
40 50
40 25
40 110

51.5

14
540
675

1200
720
720

120
45
165

36
40
240.5
44.5
384.5

570
1244
90
2144

180
70
44
294

see E/218

OCT 1946
150
17289

180
45
42.5

150
90

280
70
40
30
240

LONG HILL

PROPOSED

MASSIE ST.

STREET

OLD Augusta Rd.

DEOLEY AVE

AUGUSTA

ROAD RANCHES

PLEASANT RIDGE AVE

POTOMAC AVE

PANAMA AVE