

PLAT NO. 2.
SUNSET HILLS
 NEAR GREENVILLE, S.C.

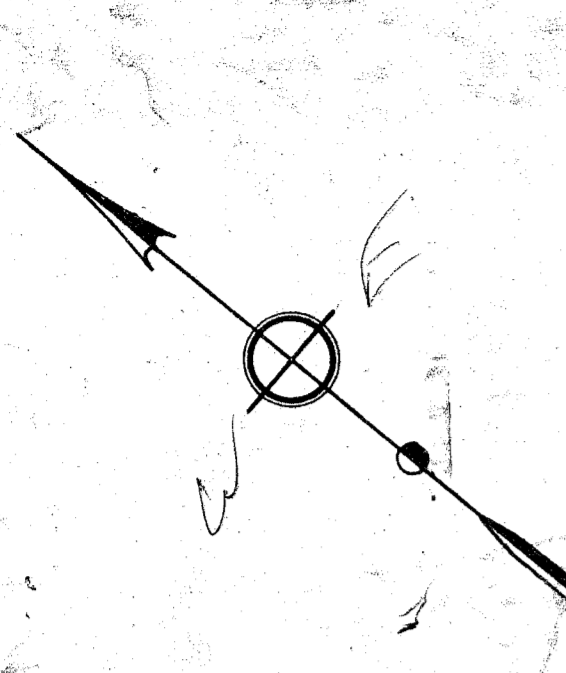
Scale 1" = 100 Dec. 1945

R. E. DALTON

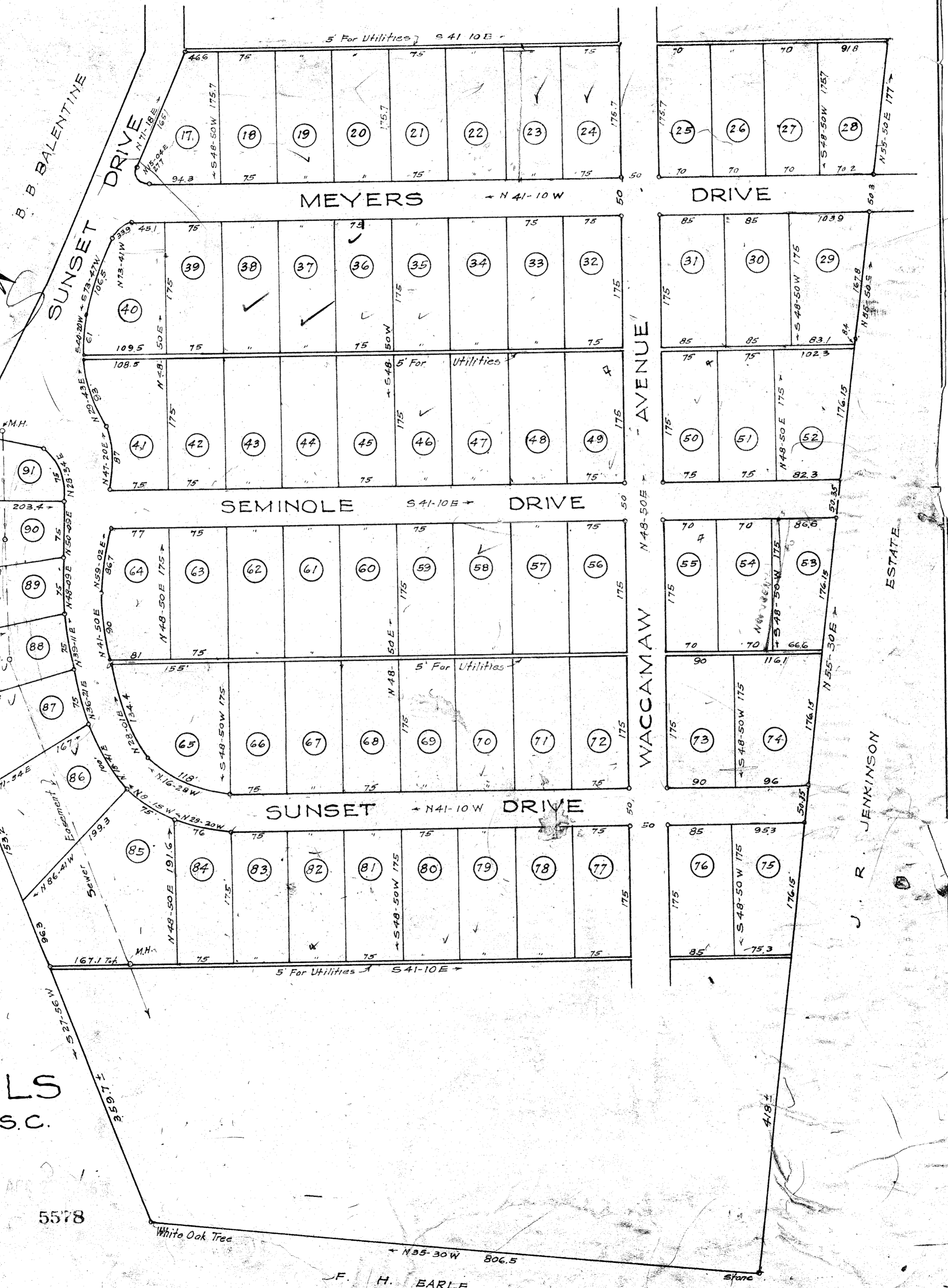
5578

Iron Pins at all Corners.

F. H. BARLE



Map Sunset Hills Dated May 1937
 5' For Utilities
 5' For Utilities
 5' For Utilities



J. R. JENKINSON

ESTATE

#5578 P. 2 April 46.
 19
 Ollie Farnsworth

Out of 265/70

3178
 46
 1500