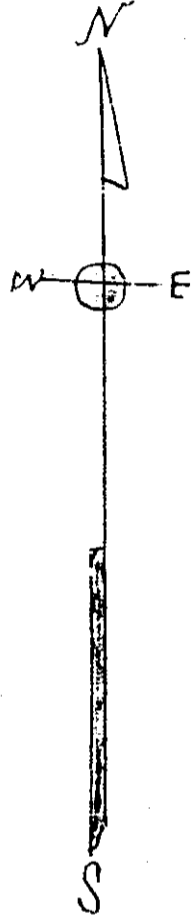
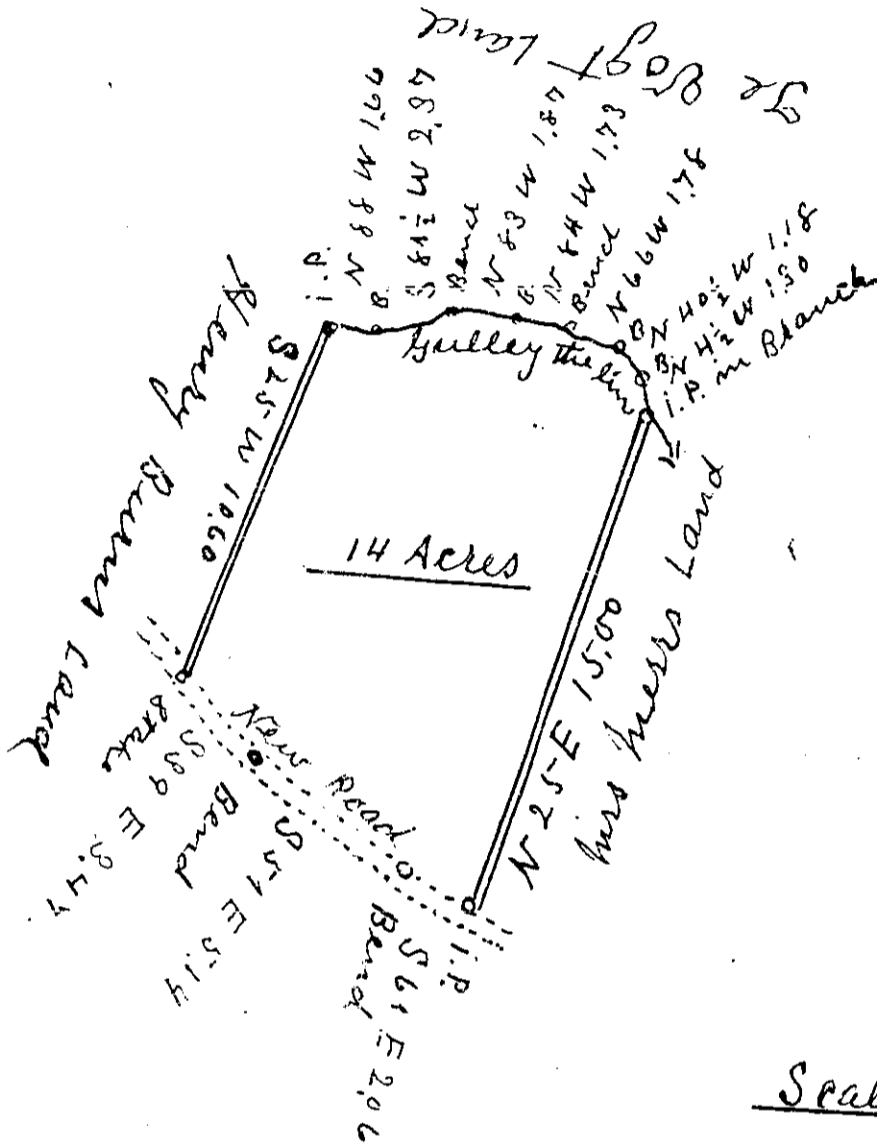


AUG 24 1945
9811



Scale of 5 Chs 1 inch.

South Carolina }
 Greenville County } By the request of
 P. O. McAlister I have
 surveyed the above tract
 of land and find it to
 contain 14 Acres
 Surveyed Aug. 18 1945
 J. A. Hester L.S.

115511

1945
 Cecil J. ...

