

CENTRAL REALTY CORP

I. Pin

390.7

N 37-30 W

I. Pin

N 82-30 W

164

I.P.

S 52-30 W

200

I.P.

CENTRAL REALTY CORP

R/W Iron Pipe

N 37-30 W

210

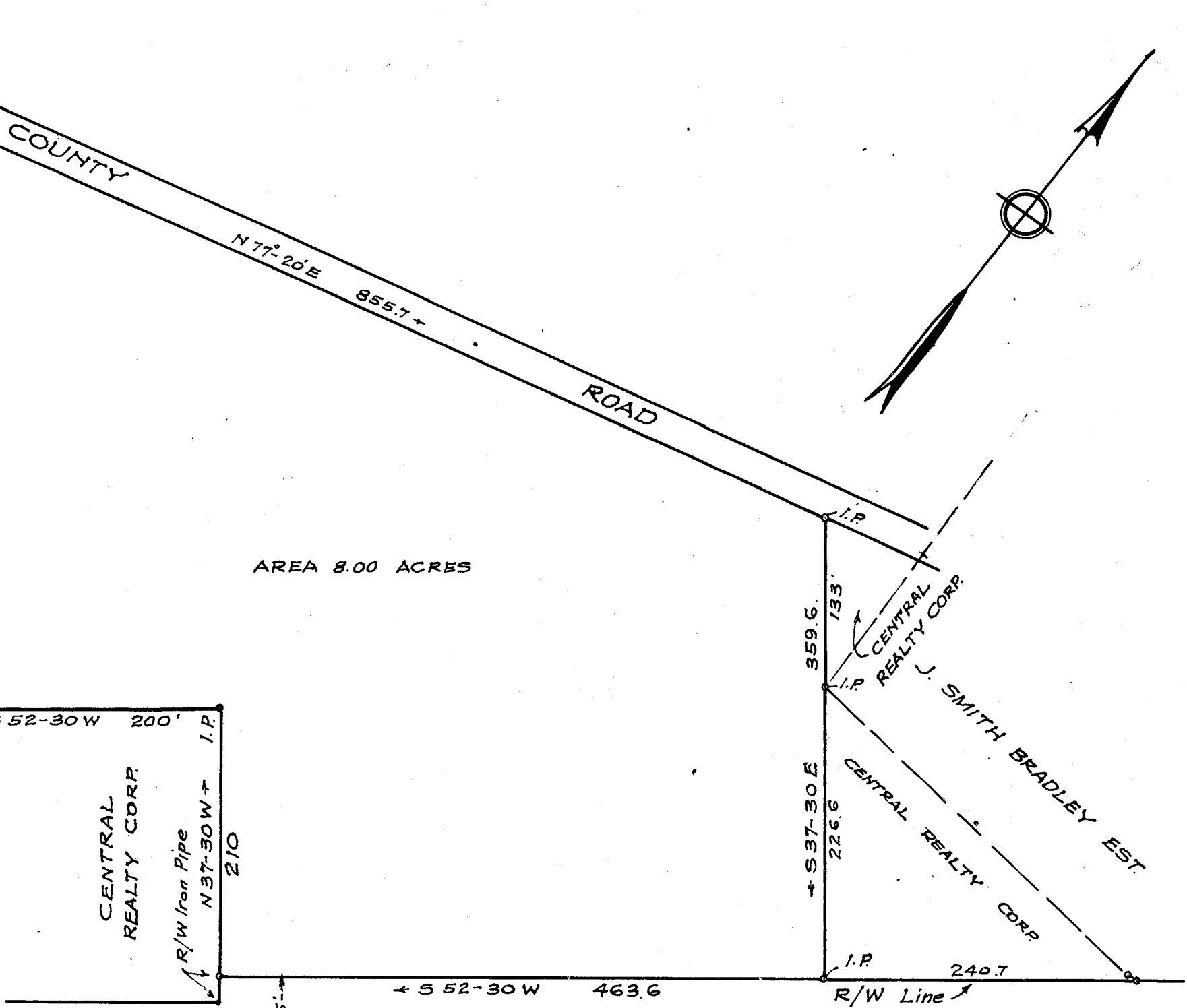
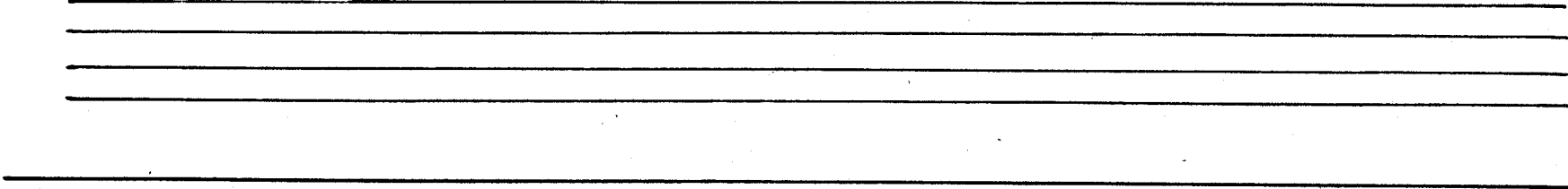
65

Paving Line

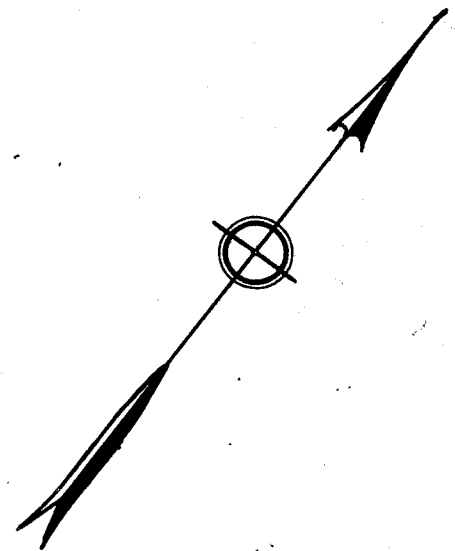
S 52-30 W

463.6

SUPER HWY. U.S. NO. 29.



AREA 8.00 ACRES



PROPERTY OF
B. L. MONTAGUE
NEAR GREENVILLE, S.C.
Scale 1"=100' June 1945

DALTON & NEVES

