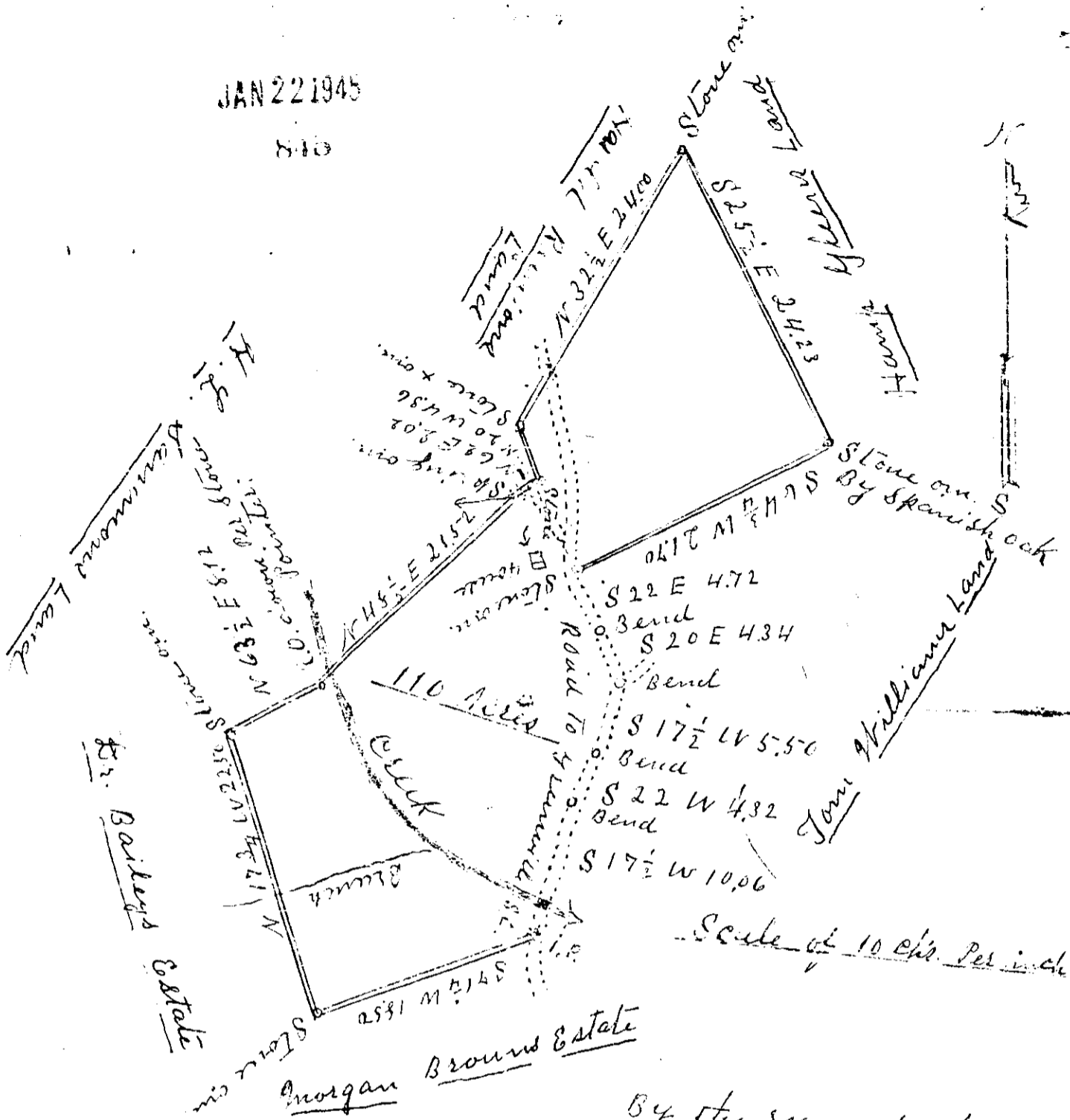


JAN 22 1945

810



Scale of 10 ch. Per inch

By the request of  
 A. L. Harbry I have surveyed  
 the above tract of land  
 and find it to contain  
 110 Acres. Surveyed Dec. 6, 1937  
 W. A. Hester  
 Reg. Surveyor

# 848

22 Jan 45

109

Allie Jarman

109