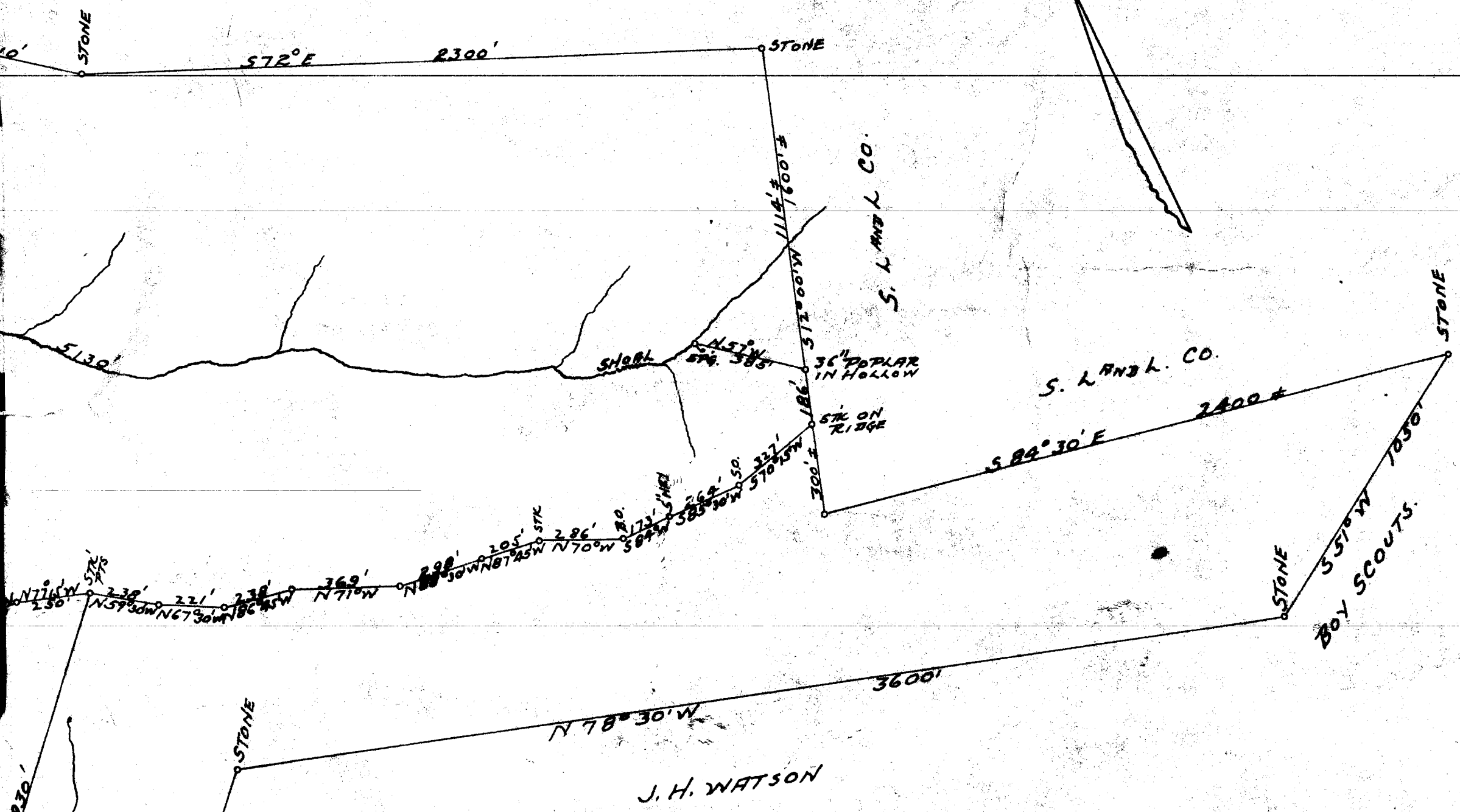
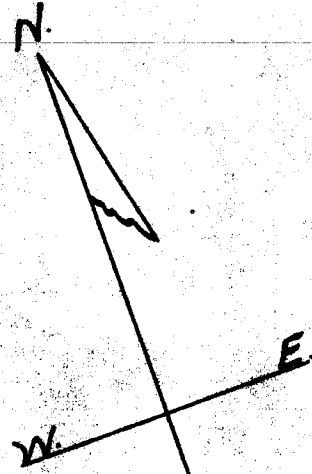


SALUDA LAND AND LUMBER CO



**SUBDIVIDED JUNE 1936
FOR SALE AT AUCTION
BY
JUSTICE AND MILLER
ENGR'S AND SURVEYORS
HENDERSONVILLE, N. C.**

**MAPPED BY
HOWARD B. MILLER
SCALE - 1 IN. = 400 FT.**

(25)
64104 AC.

670'

1930'

1930'

5130'

10'

STONE

572°E

2300'

STONE

1114'
100°W

S. L. AND L. CO.

SHOAL

36" POPLAR
IN HOLLOW

STK ON
RIDGE

S. L. AND L. CO.

2400'
584°30'E

STONE

1030'
557°W
BOY SCOUTS.

STONE

3600'

N 78°30'W

J. H. WATSON

STONE

1320'

537°W