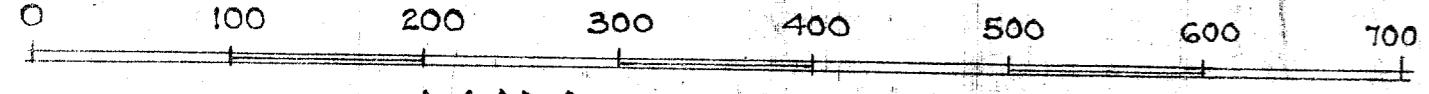


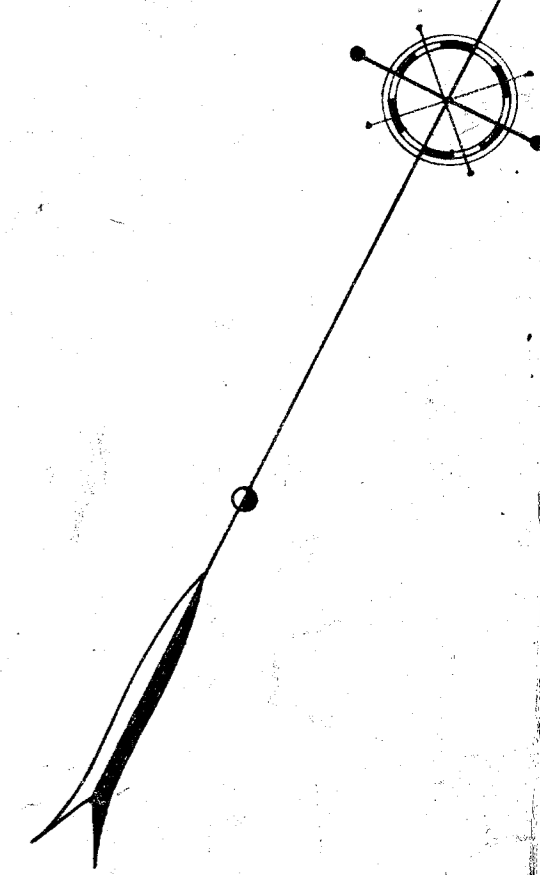
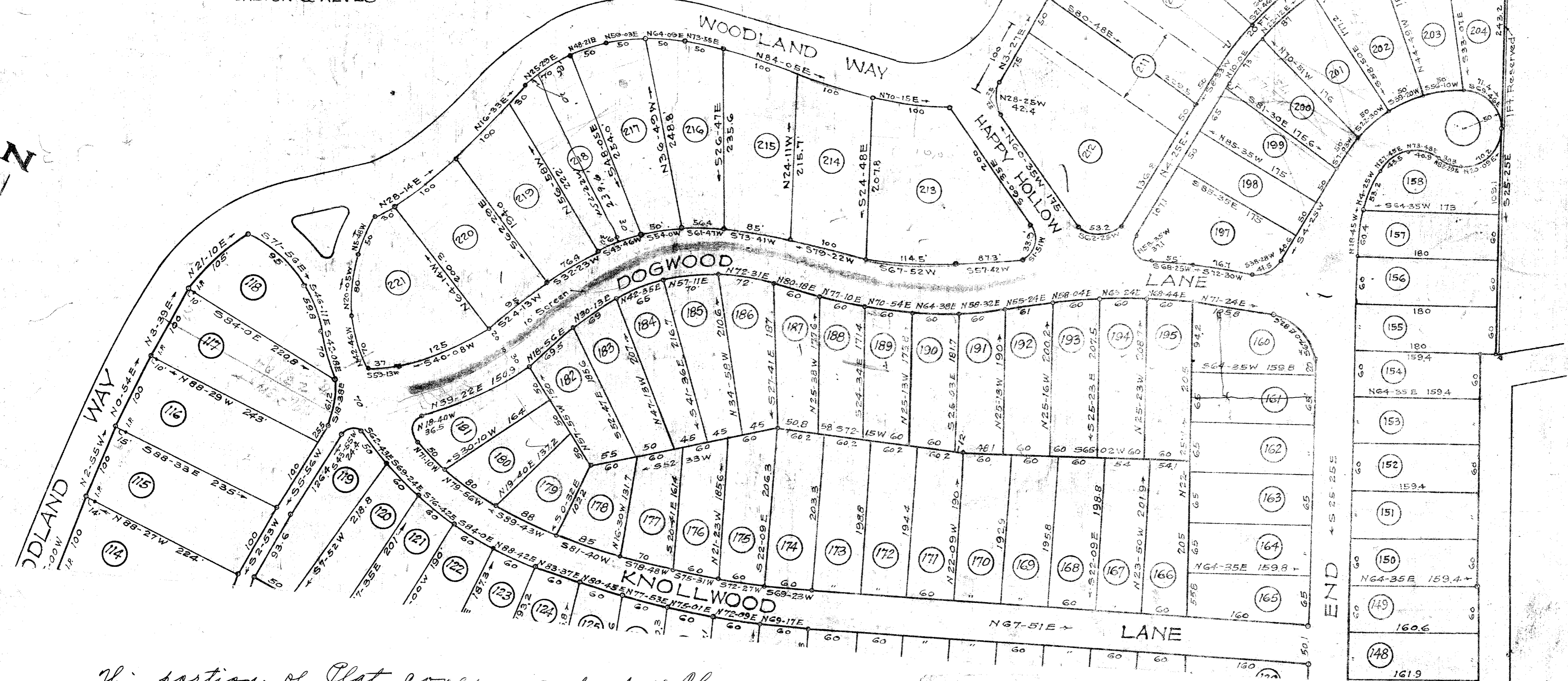
MAP OF CLEVELAND FOREST GREENVILLE S. C.

SCALE OF FEET



MAY 1940

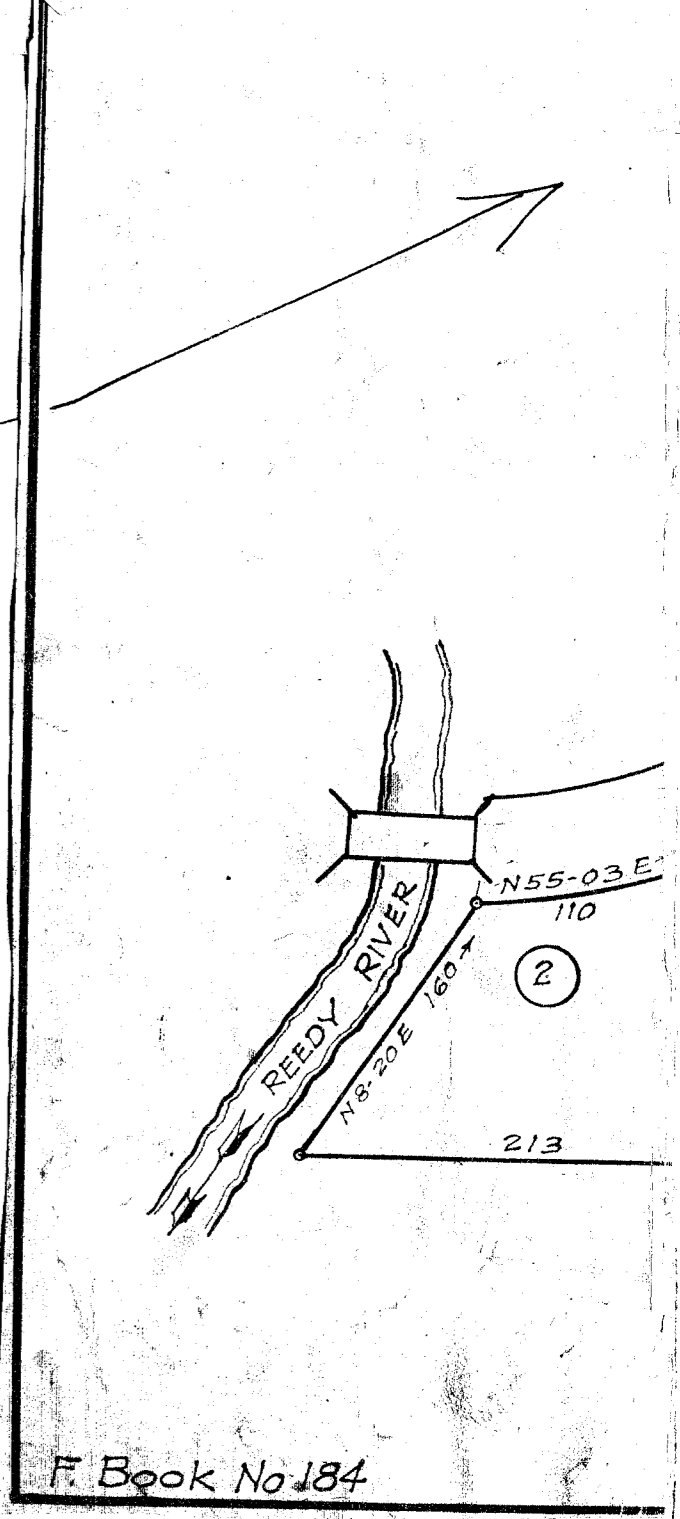
DALTON & NEVES



*This portion of Plat covers a part of Cleveland Forest as recorded on opposite page.
Recorded Nov. 21st. 1950 at 10 a.m. # 28153.
Ollie Samworth, R.M.C.*

*Addition to Map made Sept. 1945.
Jan. 1949
Oct 1949
May 1950
October 1950*

*34475 This 20 Acre Plat 49
and Recorded in P.M. - page 57
Ollie Samworth
Registrar of Deeds Greenville, S.C.*



F. Book No 184