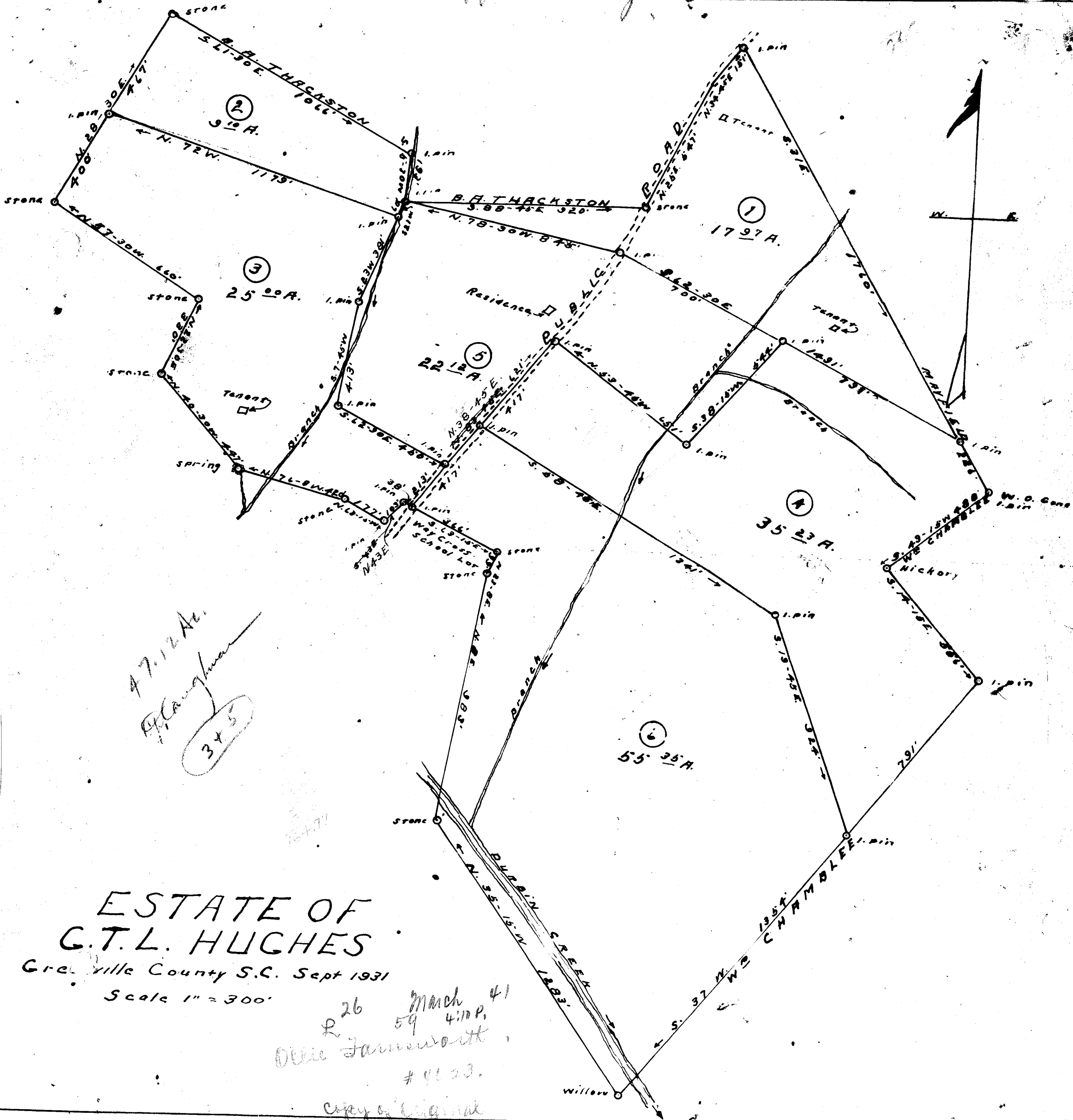


10447 - Draft P. Hughes



47.12 Ac.
 P. Hughes
 345

ESTATE OF
 G.T.L. HUGHES
 Greenville County S.C. Sept 1931
 Scale 1" = 300'

March 41
 26
 59 4:10 P.
 Ollie Jamison
 # 4123.
 copy of original

Surveyed and plotted by W. Riddle