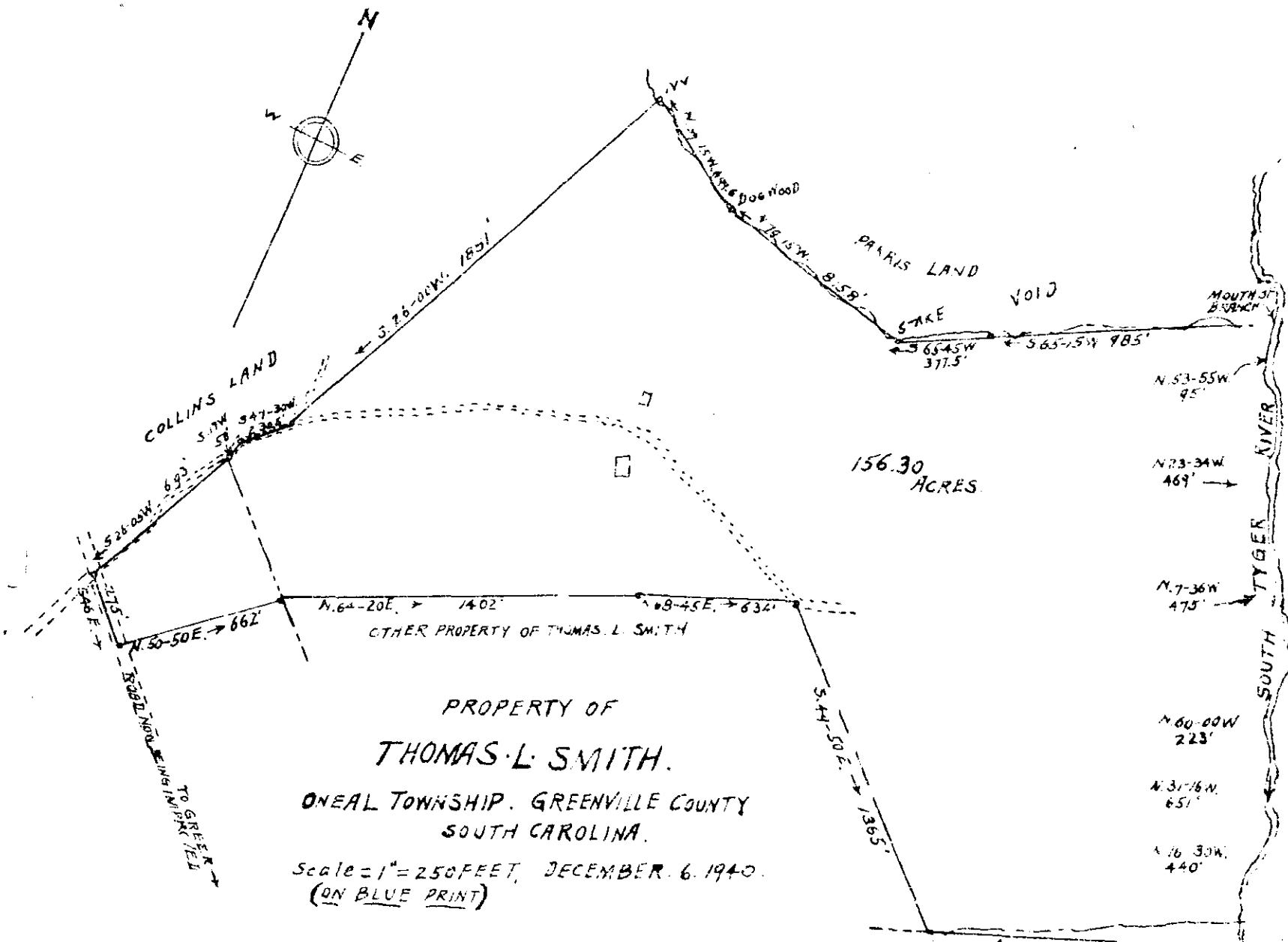


Plat Book-K-Page 85

85



Scale = 1" = 250 FEET, DECEMBER 6, 1940.
(ON BLUE PRINT)

ALL LINES SURVEYED BY ME DECEMBER 2, 1940, EXCEPT THE RIVER LINE AND THE THREE LINES AND BRANCH ON THE NORTH SIDE OF TRACT. THE TRIANGLE IN THE NORTH EAST CORNER, WHICH WAS CALCULATED

H. S. BROCKMAN, SURVEYOR
GREER, S. C.

(Note: scale this copy)
1" = 500 FEET

DAVE TRIPP.

Witnessed and attested the 29 day of Oct. 1941
at the County Clerk's Office, Greenville County, S. C.
Alice Furmanworth
Register of Deeds, Greenville County, S. C.
11-6538.