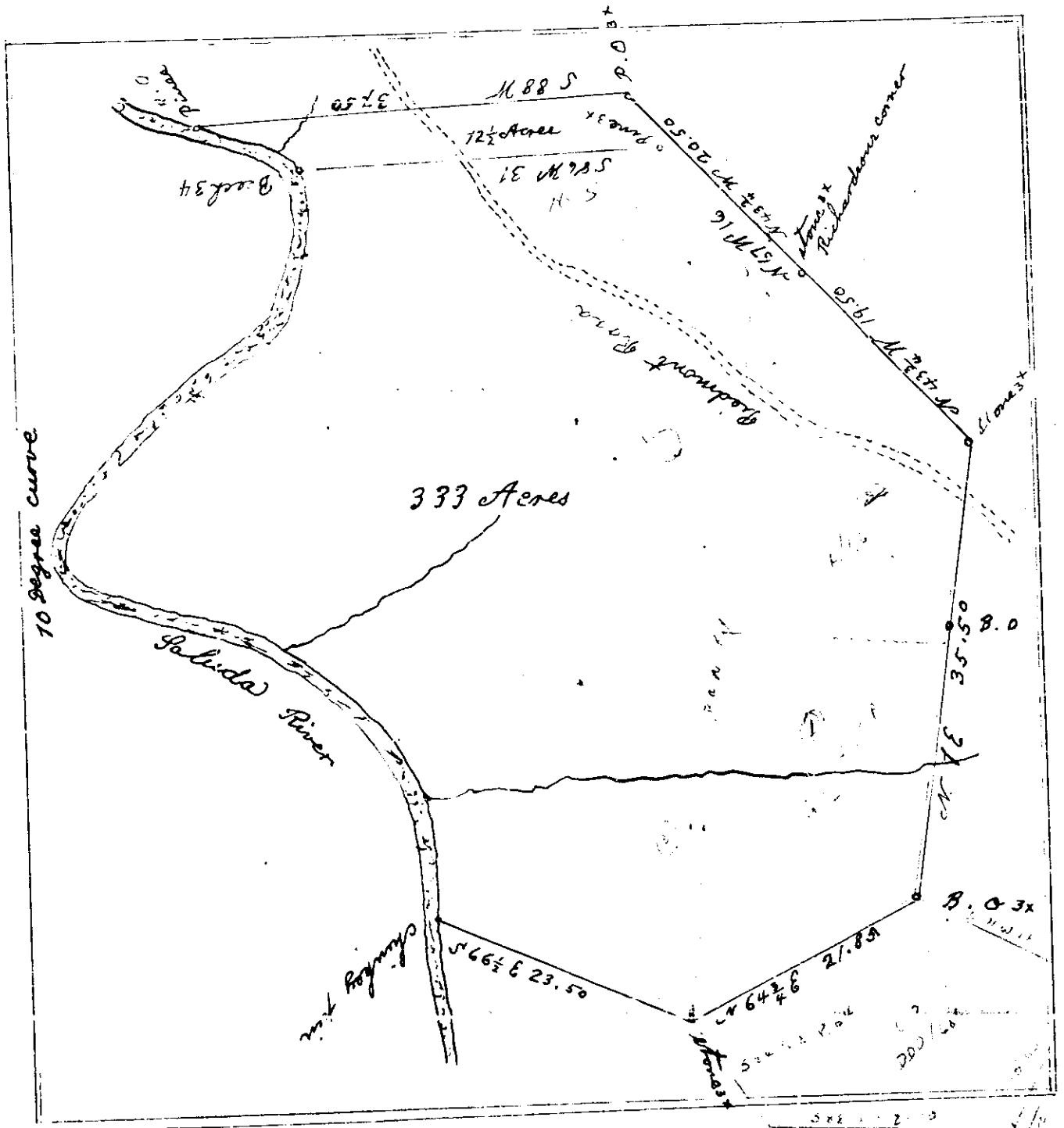


10 chains per inch



Pursuant at the request of J. J. Garrison I have surveyed a certain tract of land on which he now lives and find it to contain 333 Acres having such shapes and bearings as the above plat represents surveyed April 17 1854

J. J. Richardson

11 May 1854
 Plate 67
 Alice Garrison

(The above is an 'exact copy'. Note errors.)