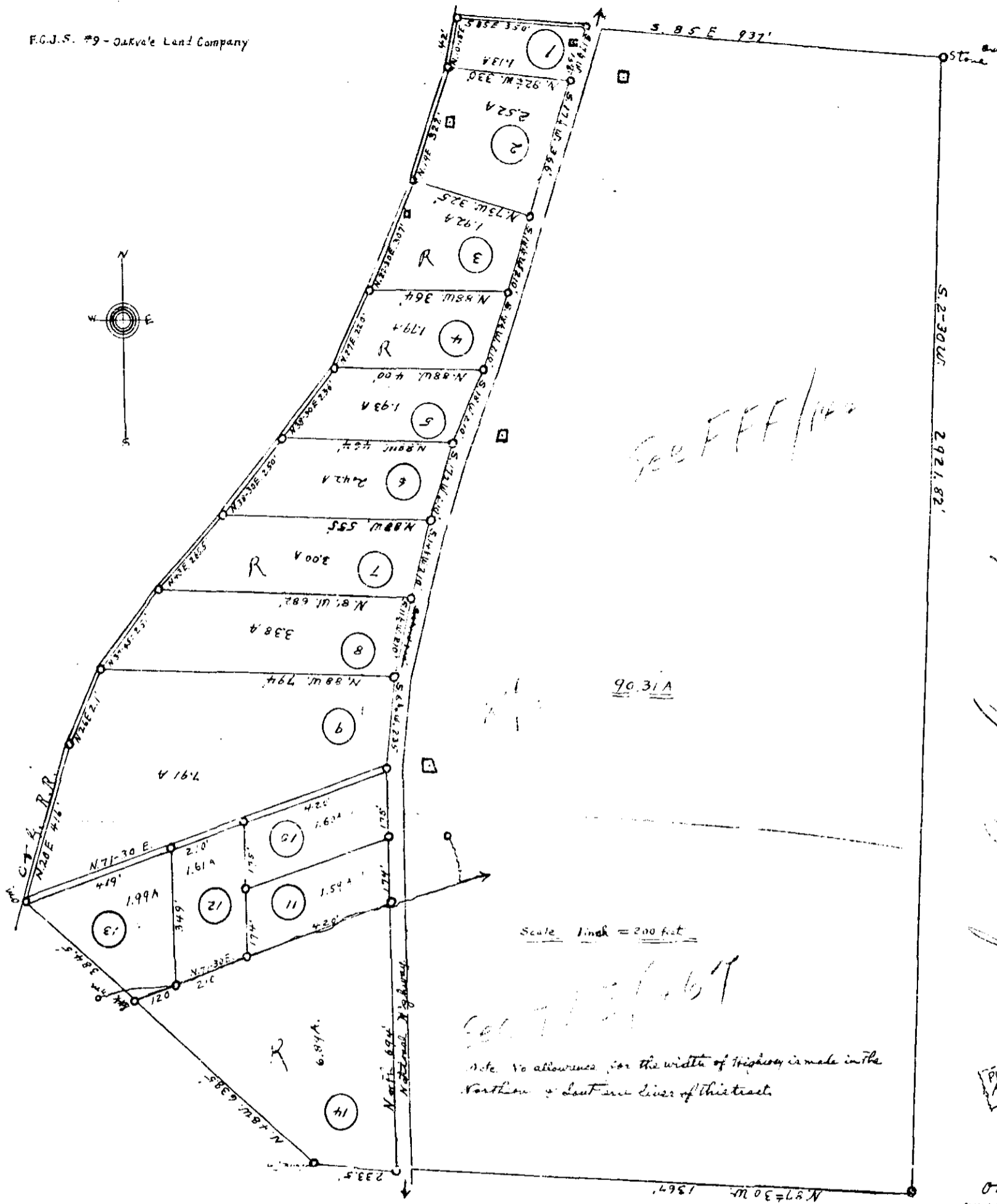


F.C.J.S. #9 - Oakvale Land Company



See FFF/142

PLAT APPROVED
For Release
H.C. #9.
AUG 10 1936

OK
JUL 16 1936
H.C.

Winnemucca County N.C. This shows plat relative to a tract of land located near Cuckoo on the National Highway and all that portion west of the Highway has been subdivided as per the above plat and the acreage is as shown above as to the subdivision; and the acreage of that portion east of Highway is 90.31 as figured from an older survey but the lines on the Western Tract have all been surveyed and is as shown above. The 6.89 acre lot was not computed by me was not computed by me, but the lines as shown were run & measured by me and are correct, surveyed and reconstructed this July-6th, 1936. G. A. Ellis, Sur.

12835

SEP 11 1940

J. Plats

58

Miss Ollie Furnsworth

NOTE
This Photostat print is a 20% reduction of original.

J.M.C.
(Exact copy of Plat, showing changes figures, notes, etc.)