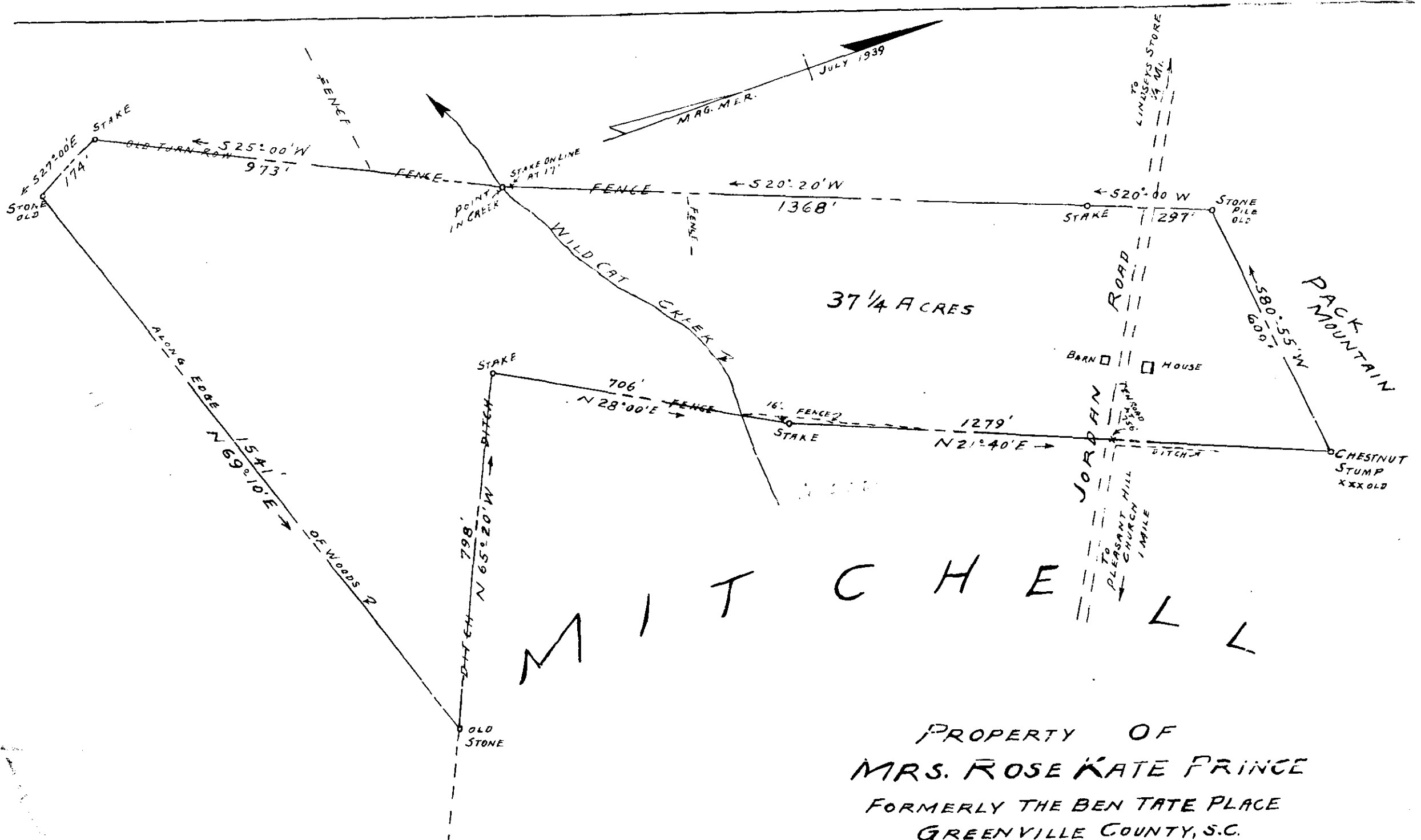


J.V.C.



37 1/4 ACRES

MITCHELL

PROPERTY OF  
 MRS. ROSE KATE PRINCE  
 FORMERLY THE BEN TATE PLACE  
 GREENVILLE COUNTY, S.C.

SCALE: 1"=200' JULY 24, 1939

J. H. GOOCH, SUR.  
 SPARTANBURG, S.C.

FIELD C. B. VASS

DEED REF:  
 VOL. 67 PG. 156  
 VOL. 108, PG. 91  
 VOL. 209, PG. 128  
 R.M.C. OFFICE, GREENVILLE COUNTY, S.C.

11922 FILE # GRE-9  
 71