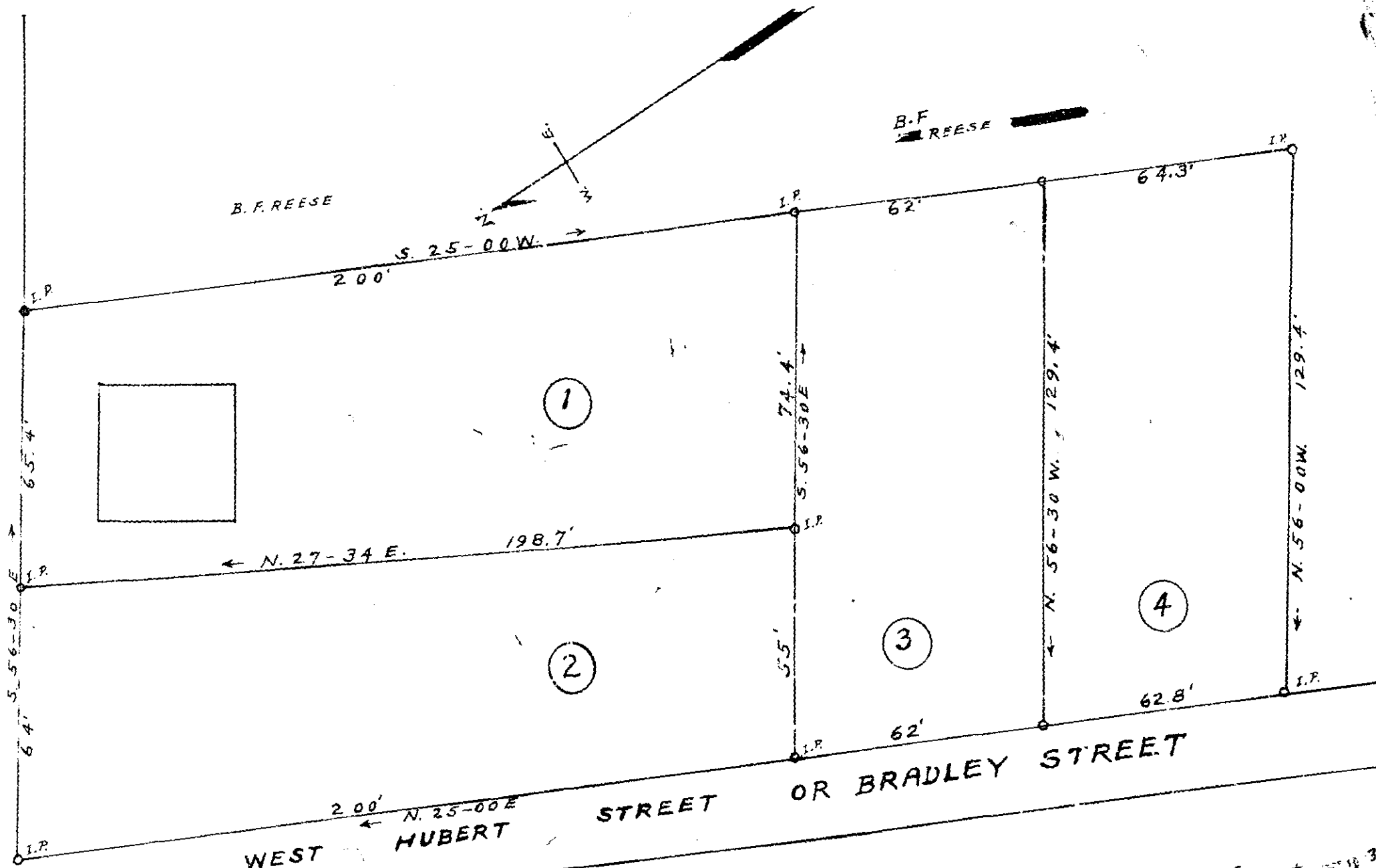


Plat Book-K-Page 110

← GREENVILLE NATIONAL HIGHWAY →
GREER →



NOW OWNED BY
CLAUDE & LOUIS DUNCAN
JULY 7, 1939
H.S. BROCKMAN,
SURVEYOR.

**PROPERTY OF
W.P. DUNCAN
GREER S.C.**
SURVEYED AND PLATTED BY
H.S. BROCKMAN,
SURVEYOR
DEC. 9, 1929
SCALE: 1" = 25 FEET

FILED THIS 31 DAY OF August 1939
Plato 10
Dee J. Sumner
#10983