

FILED THIS 8 DAY OF October, 1940

50¢

14139

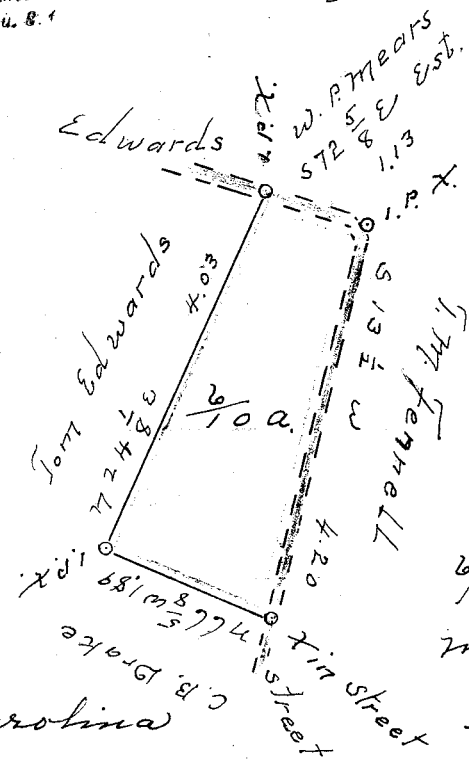
AND RECORDED IN VOL. J OF

Plats AT PAGE 235

OCT 8 1940

Ollie Gansworth
Register Merces Conveyances
Greenville County, S. C.

2 chs. per In.



6/10 of an acre,
more or less.

State of South Carolina
County of Greenville

This plat represents the lot of land conveyed by T. M. Fennell to G. H. Moon it is situate in East View School District Oaklawn Township, State and County aforesaid.

October 7th A. D. 1940

B. F. Wigington
Surveyor.