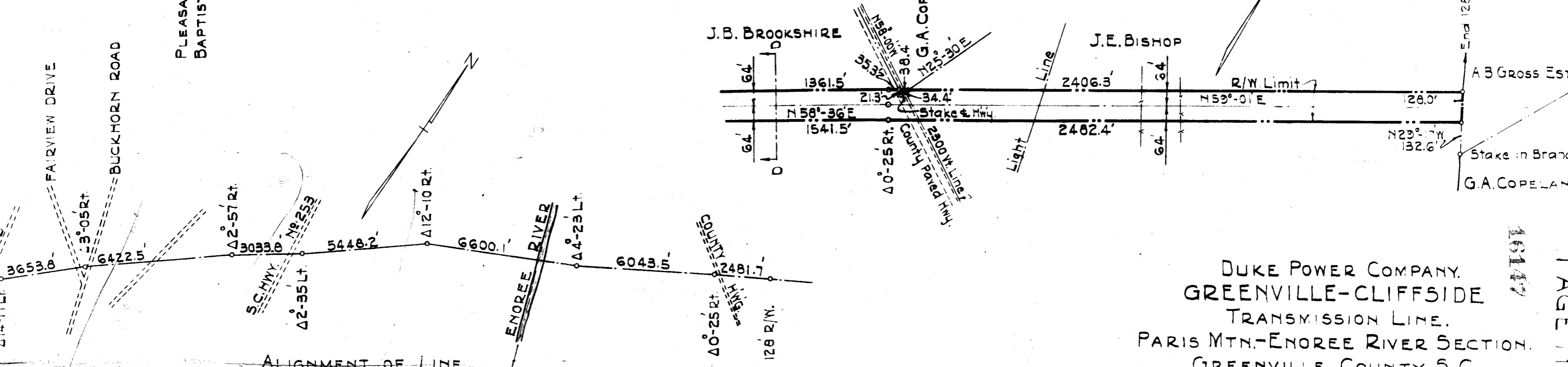
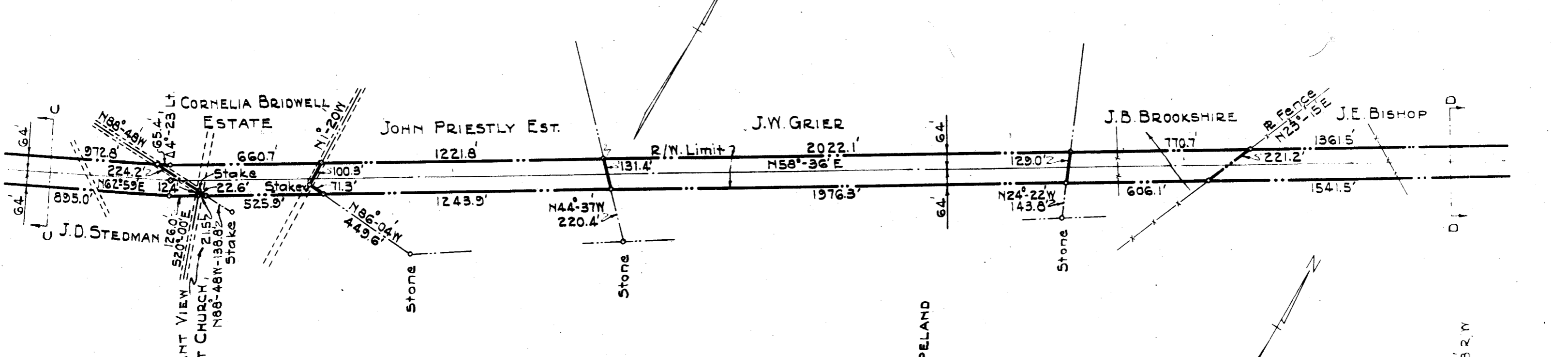
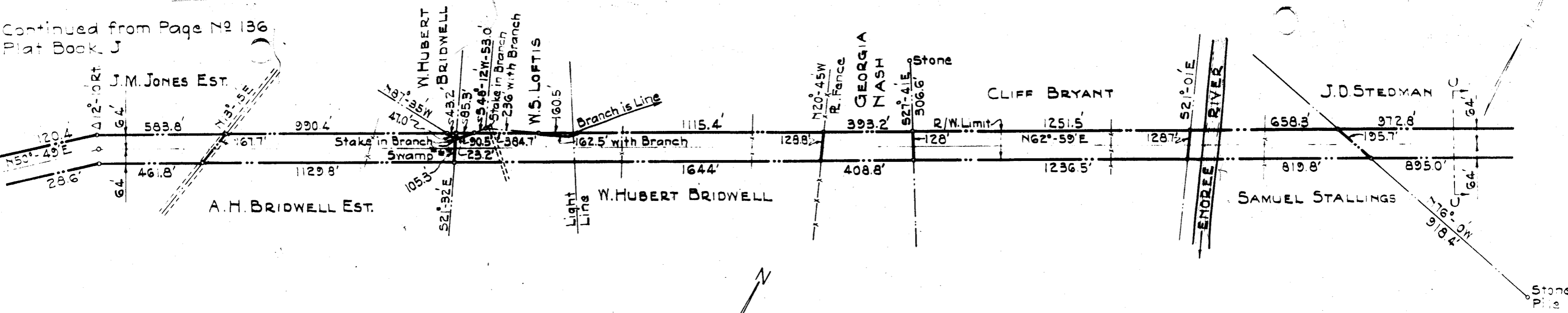


Continued from Page No 136
Plat Book J



ALIGNMENT OF LINE
SCALE: 1"=400'

DUKE POWER COMPANY.
GREENVILLE-CLIFFSIDE
TRANSMISSION LINE.
PARIS MTH.-ENOREE RIVER SECTION.
GREENVILLE COUNTY, S.C.
SCALE: 1"=100'