

1"=50'

Stable

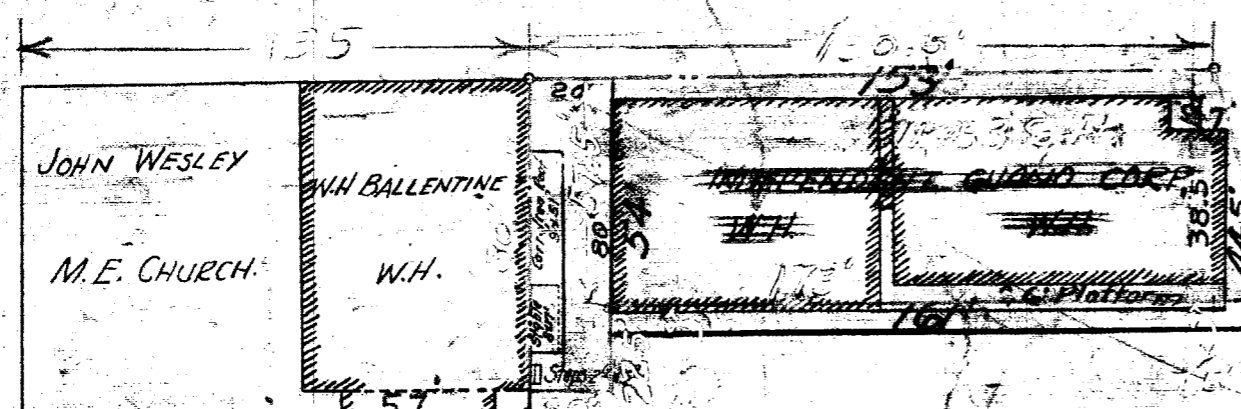
24' TOP 43'

COURT

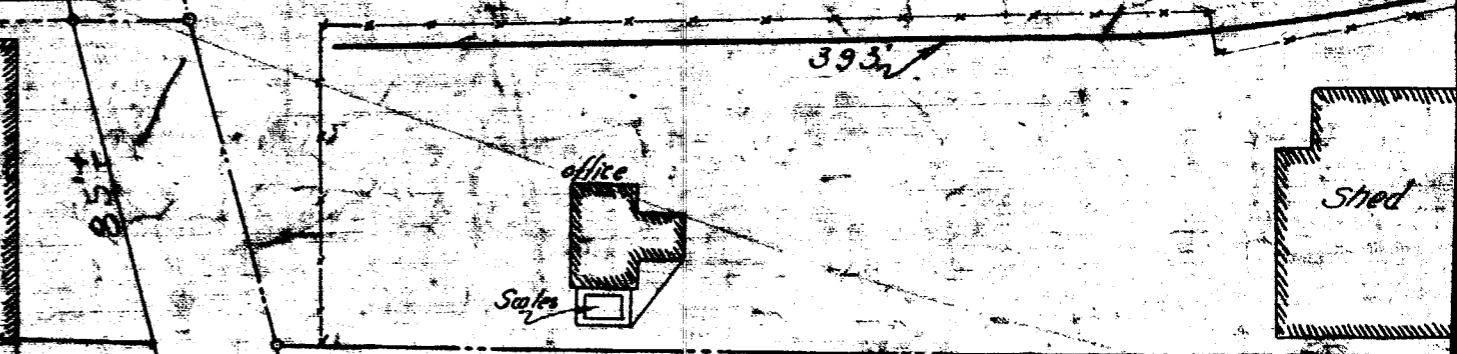
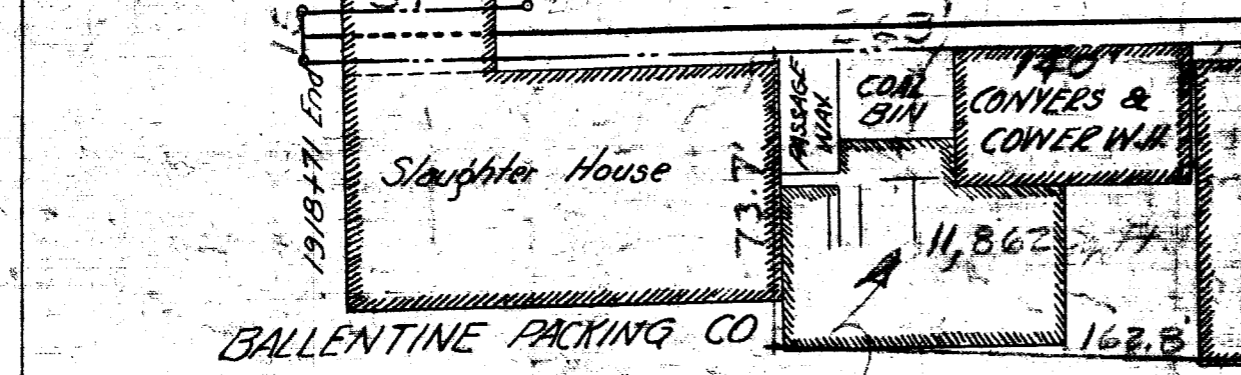
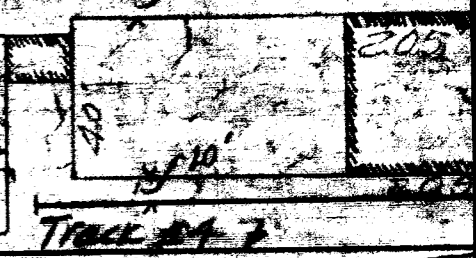
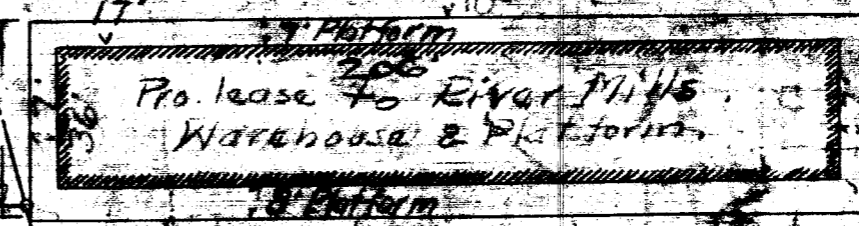
Pro. to lease to  
Balentine Packing Co.

ST.

Pro lease to  
Shell Union



GAS



BALLENTINE PACKING CO

Sold to Balentine Packing Co  
in 1923

GREENVILLE, S.C.

1"=50'

GOWERS SUPPLY CO.

FALL

BROAD

ST.

BROAD