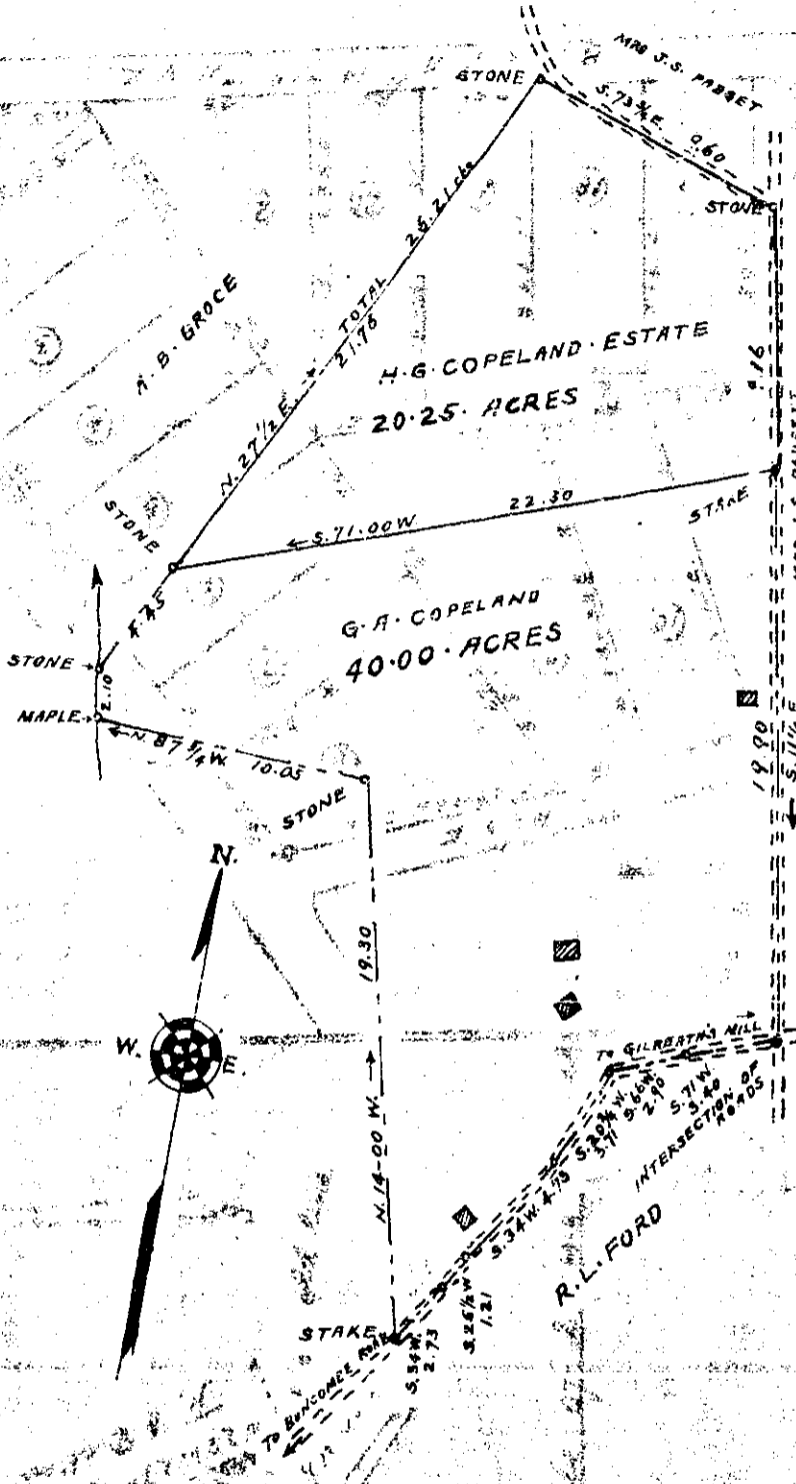


PROPERTY OF
D. L. BRAMLET
RECORDED



PROPERTY OF
H. G. COPELAND ESTATE

3 MILES NORTH WEST OF GREER
CHICKS SPRINGS TOWNSHIP GREENVILLE COUNTY
SOUTH CAROLINA

SCALE: 1" = 5.00 CHAINS DECEMBER 13 1938

PLATTED FROM CALLS IN DEEDS 333-186 AND 42-315.
THE S 73 1/4 E 9.60 LINE CORRECTED FROM DISTANCE OF 8.40
BY REMEASUREMENT, DEC-12-1938

H. S. BROCKMAN, SURVEYOR
GREER, S. C.

FILED THIS 13 DAY OF Feb 1939
PAGE 138
Ollie Jamowitz

BAD COPY