

# Plat Book I, Page 102

{ See Plat Book "A"  
Page 337. }

(N.B. The Lot Nos.  
and "SEC. I." added on record.)

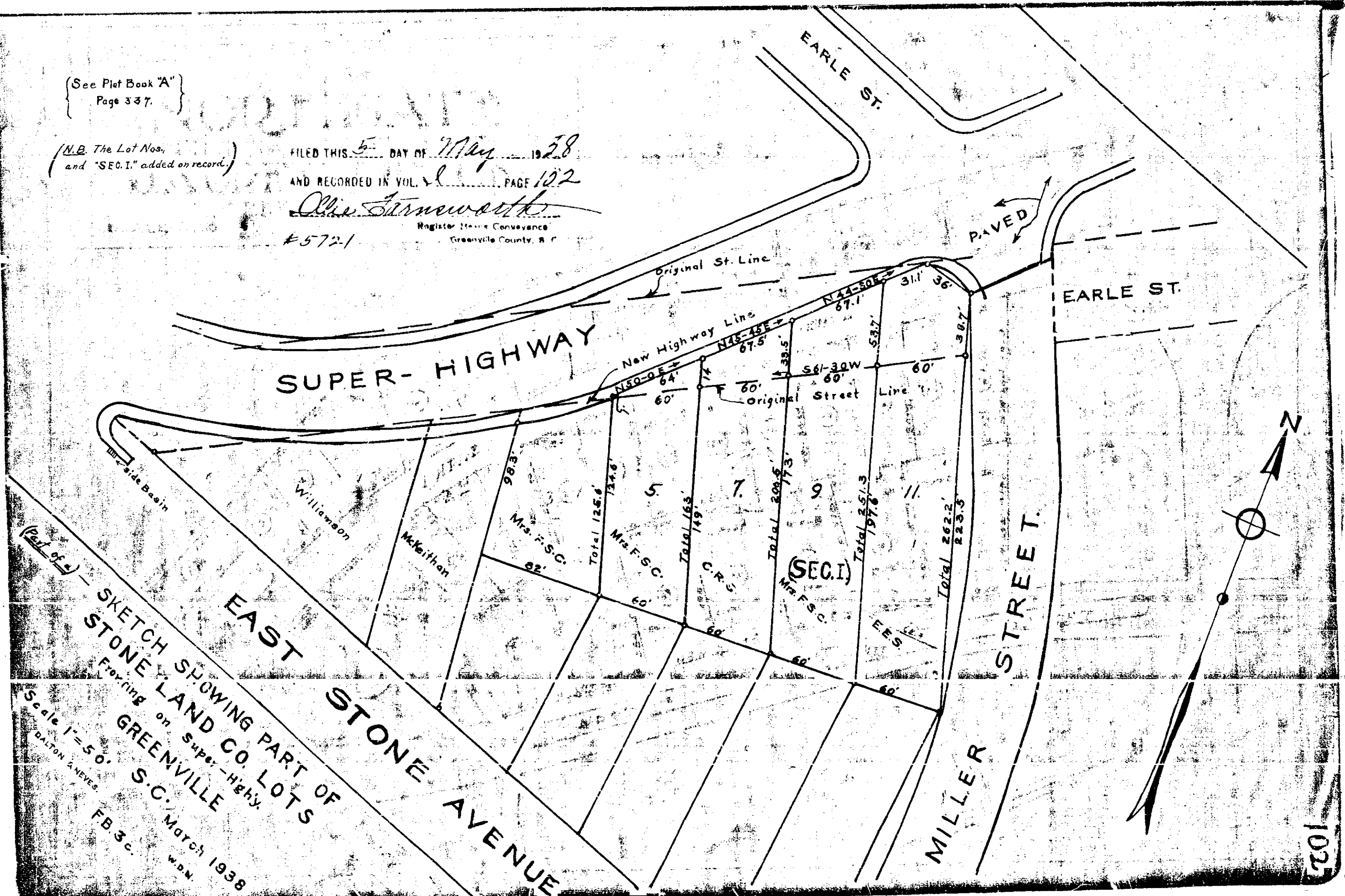
FILED THIS 5 DAY OF May 1928

AND RECORDED IN VOL. 8 PAGE 102

*Ollie Turneworth*

Register of Conveyance  
Greenville County, S. C.

#5721



(Part of a) SKETCH SHOWING PART OF  
STONE LAND CO. LOTS  
Lying on Super-Highway,  
GREENVILLE  
S.C. March 1938  
Scale 1" = 50'  
DALTON & NEVES  
F.B. 3 c.  
W.P.N.