

Plat Book I, Page 84A

Iron Pins at all Corners, not otherwise noted

84

4 Oct 1937
and Recorded in Vol. J of Plate

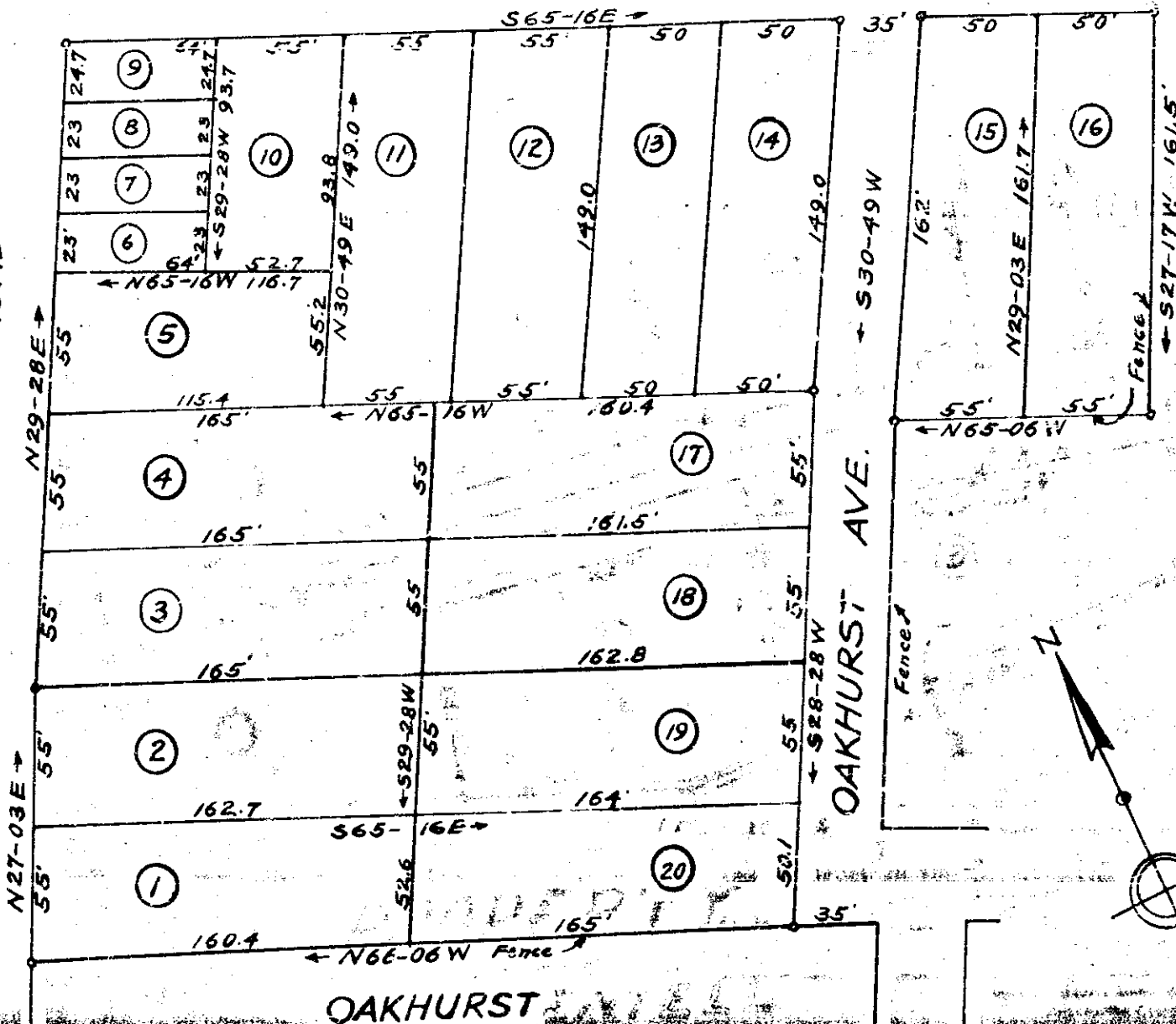
at Page 87

#12107 Plie. Jamnath

Reg. at the Office of the
Greenville County, S. C.

RUTHERFORD ROAD

BUIST AVENUE



OAKHURST

NEAR GREENVILLE, S.C.

Scale 1" = 60' Oct. 1936.

J. Hudson Williams
Realtor

P. R. Long & Co.
Realtors

AGENTS
DALTON & NEVES
ENGINEERS.

See Plat

J/267 + 269