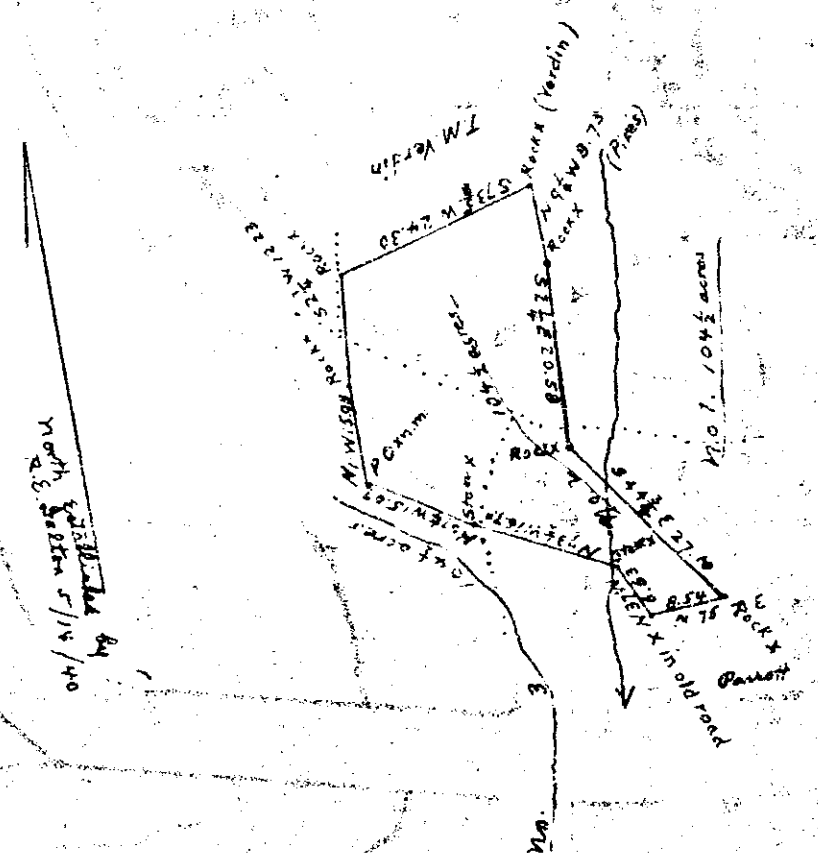


# Plat Book I, Page 71B

71

Plat of a Part of Plat -  
 (one subdivision) - Trust No. 2 -  
 a survey by Jas P. Attaway  
 for J.F. Watson, in Jan. 1910,  
 in Greenville County, S.C.



THIS 22 DAY OF June 1910  
 FOR CARDS: 100 1/2  
 Plats made of 71

Ollie Jarmanworth  
 19079