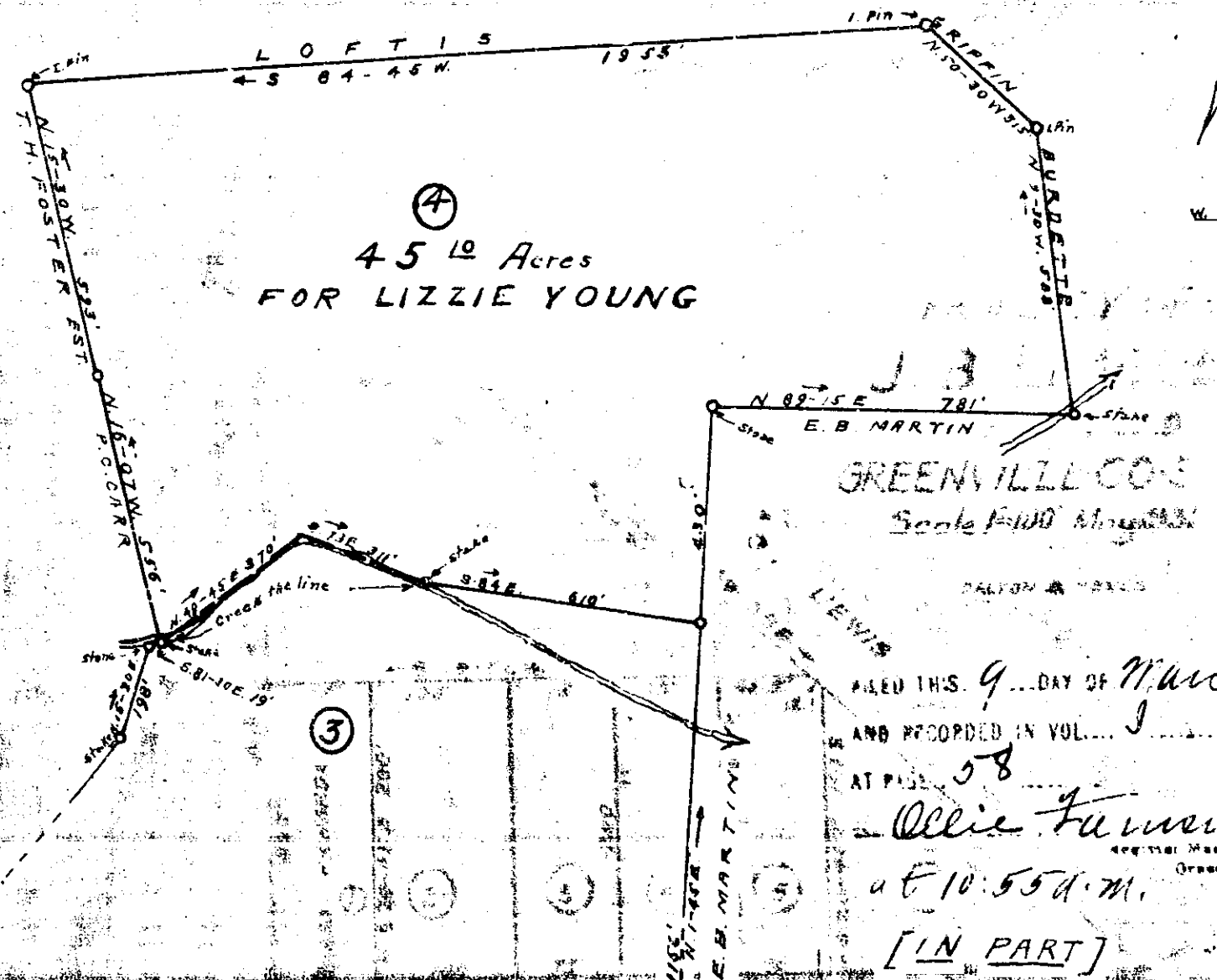


Plat Book I, Page 58B

58



④
45¹⁰ Acres
FOR LIZZIE YOUNG

GREENVILLE CO. S.C.
Scale 1" = 100'

FILED THIS 9... DAY OF March 19 37
AND RECORDED IN VOL. 1... 35198,
AT PAGE 58

Ollie Farnsworth
at 10:55 A.M.

[IN PART]

ESTATE OF
ANCRUM FULLER
Greenville County S.C. Jan 13-1936
Scale 1" = 300'

[Exact copy in part]

"Surveyed and plated by W. J. Riddle"