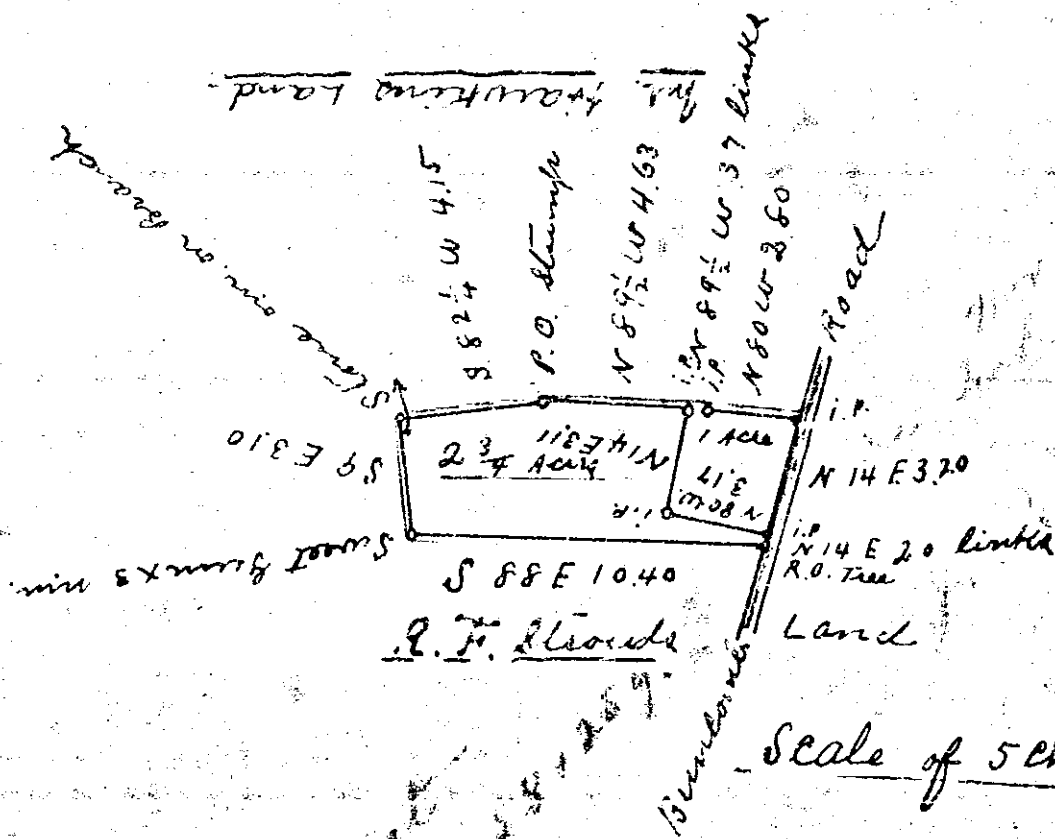


Plat Book I, Page 41A



South Carolina
Greenville County

By the request of
R. F. Stroid I have
surveyed the above
tract of land for
J. M. Johnson and find
to contain 1 Acre and
2 3/4 Acres Total 3 3/4 Acres

Surveyed Dec. 14, 1936

W. A. Hester L.S. DEC 17 1936

14350