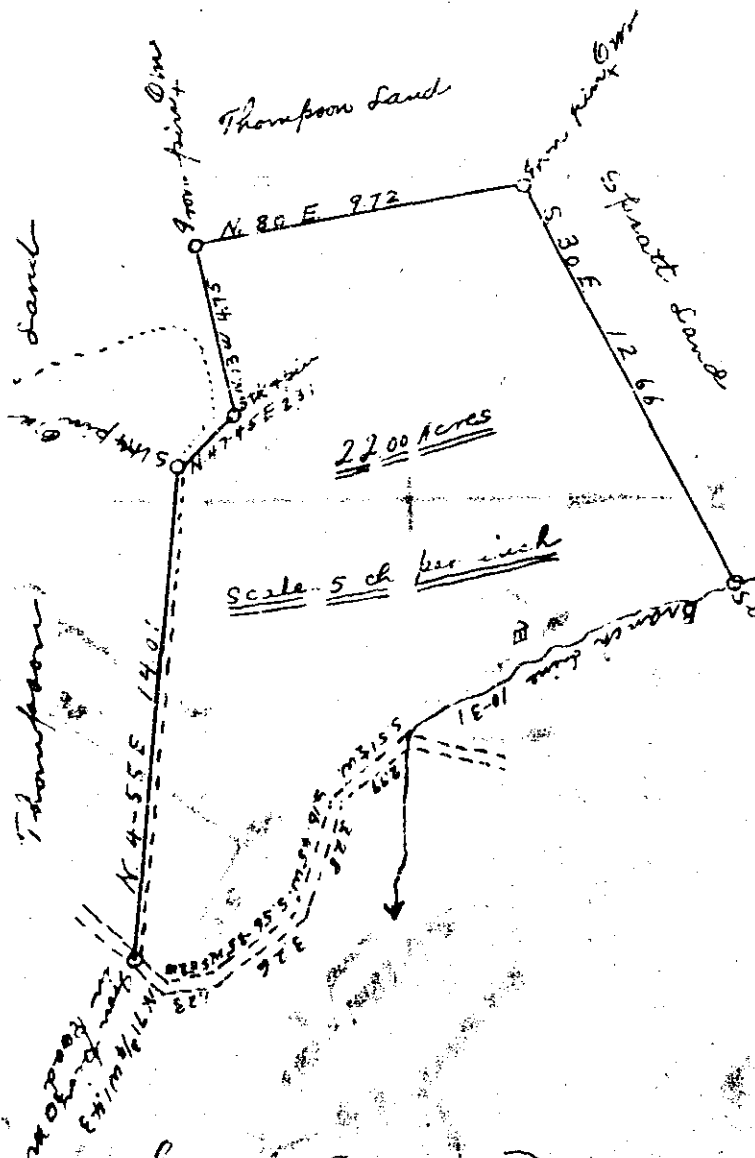


Plat Book I, Page 22



Branch lines
 S. 74-30 W. 2.81
 S. 67 W. 1.58
 S. 66 W. 2.42
 S. 44-30 W. 3.50
 to The Public Road.

South Carolina
 Greenville County } The above plat represents
 a tract of land as surveyed
 by me for W. B. Hudson and
 Leonard Brawley and being
 the same tract purchased by them
 from W. T. Bridges and it was
 surveyed by having the corners shown
 me by W. T. Bridges and agreed to by
 Mr. Thompson.
 Surveyed this Aug-10th 1936.

H. A. Ellis Sur

FILED THIS 18 DAY OF Aug 1936
 RECORDED IN VOLUME I OF PLATS

AT P. O. 22
 H. A. Ellis

RECORDED IN VOLUME I OF PLATS