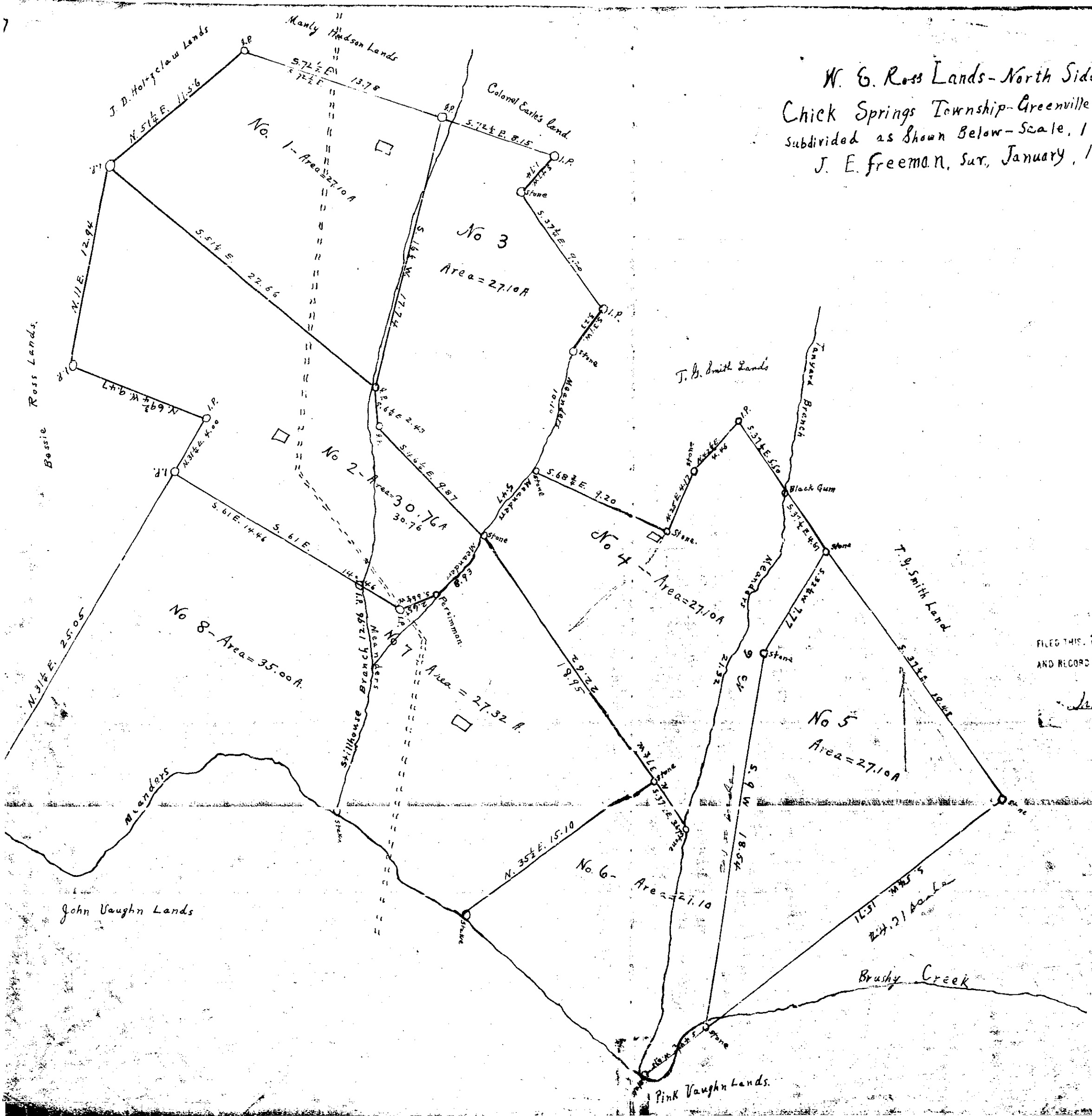
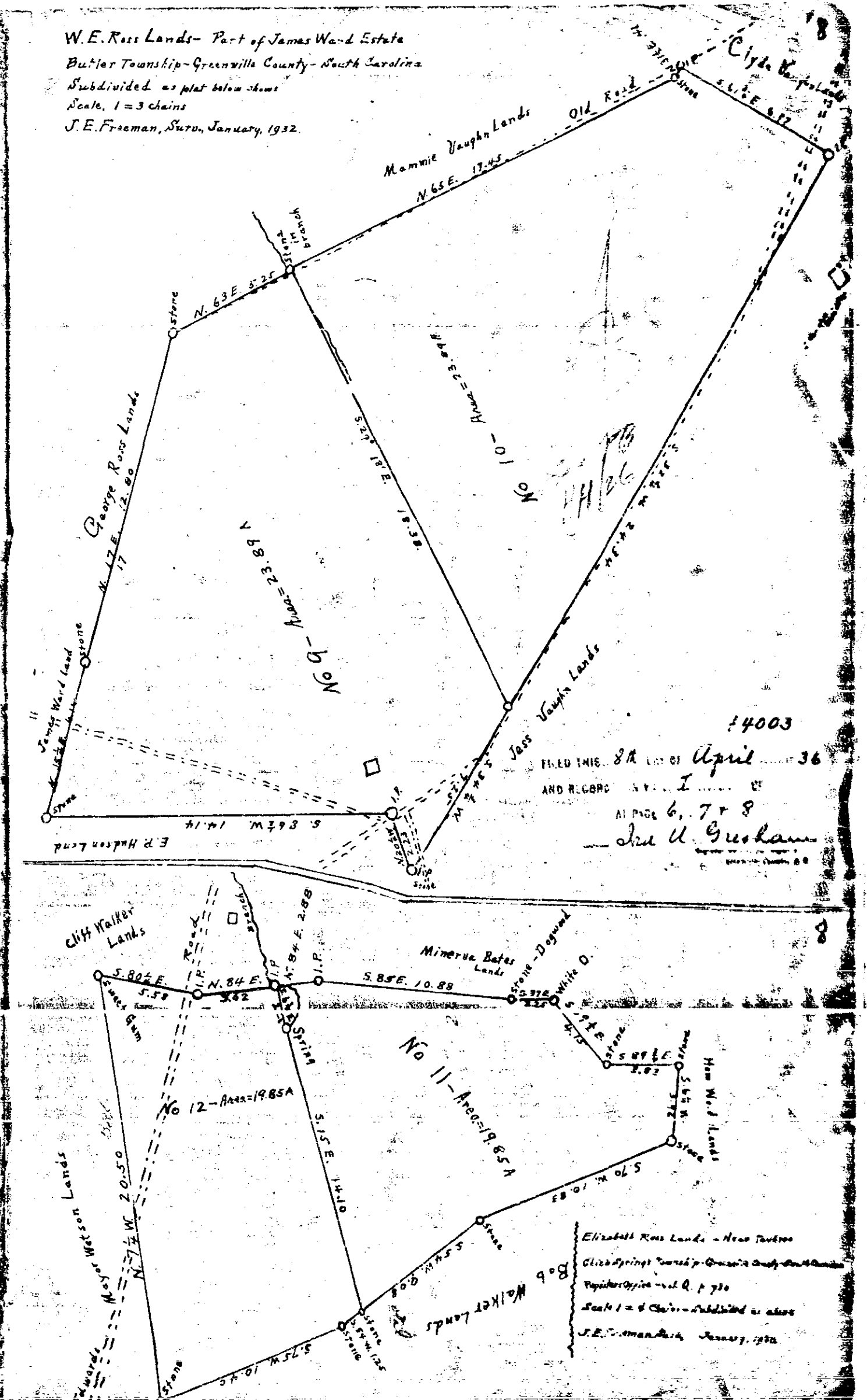


W. E. Ross Lands - North Side Brushy Creek  
 Chick Springs Township - Greenville County - South Carolina  
 Subdivided as Shown Below - Scale, 1 = 4 Chains  
 J. E. Freeman, Sur., January, 1932.



#4003  
 FILED THIS 8th DAY OF April 1936  
 AND RECORDED IN I OF  
 AT PAGE 6 7 & 8  
 J. E. Freeman

W. E. Ross Lands - Part of James Ward Estate  
 Butler Township - Greenville County - South Carolina  
 Subdivided as plat below shown  
 Scale, 1 = 3 chains  
 J. E. Freeman, Sur., January, 1932.



#4003  
 FILED THIS 8th DAY OF April 1936  
 AND RECORDED IN I OF  
 AT PAGE 6, 7 & 8  
 J. E. Freeman

Elizabeth Ross Lands - Near Tuckee  
 Chick Springs Township - Greenville County - South Carolina  
 Registered in vol. R. p. 730  
 Scale 1 = 4 Chains - Subdivided as above  
 J. E. Freeman, Sur., January, 1932.