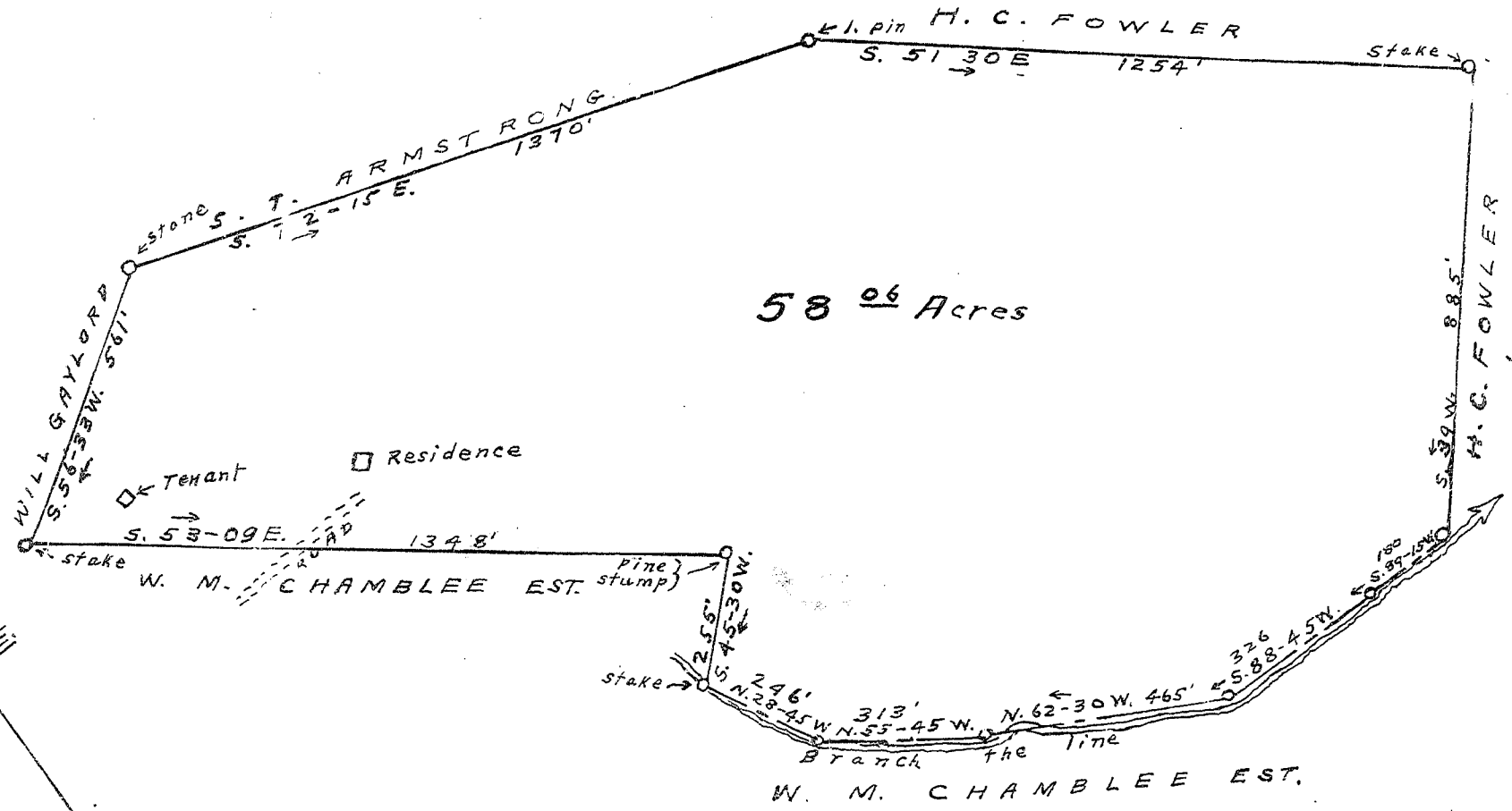


12619
 Dec 1935
 H. S. ARMSTRONG
 298
 Ira A. Gresham



58⁰⁶ Acres

PROPERTY OF
H. S. ARMSTRONG
 Greenville County S.C. Oct. 29-1934
 scale 1" = 300'

surveyed and plated by W. J. Riddle.

(some figures badly blurred on original)