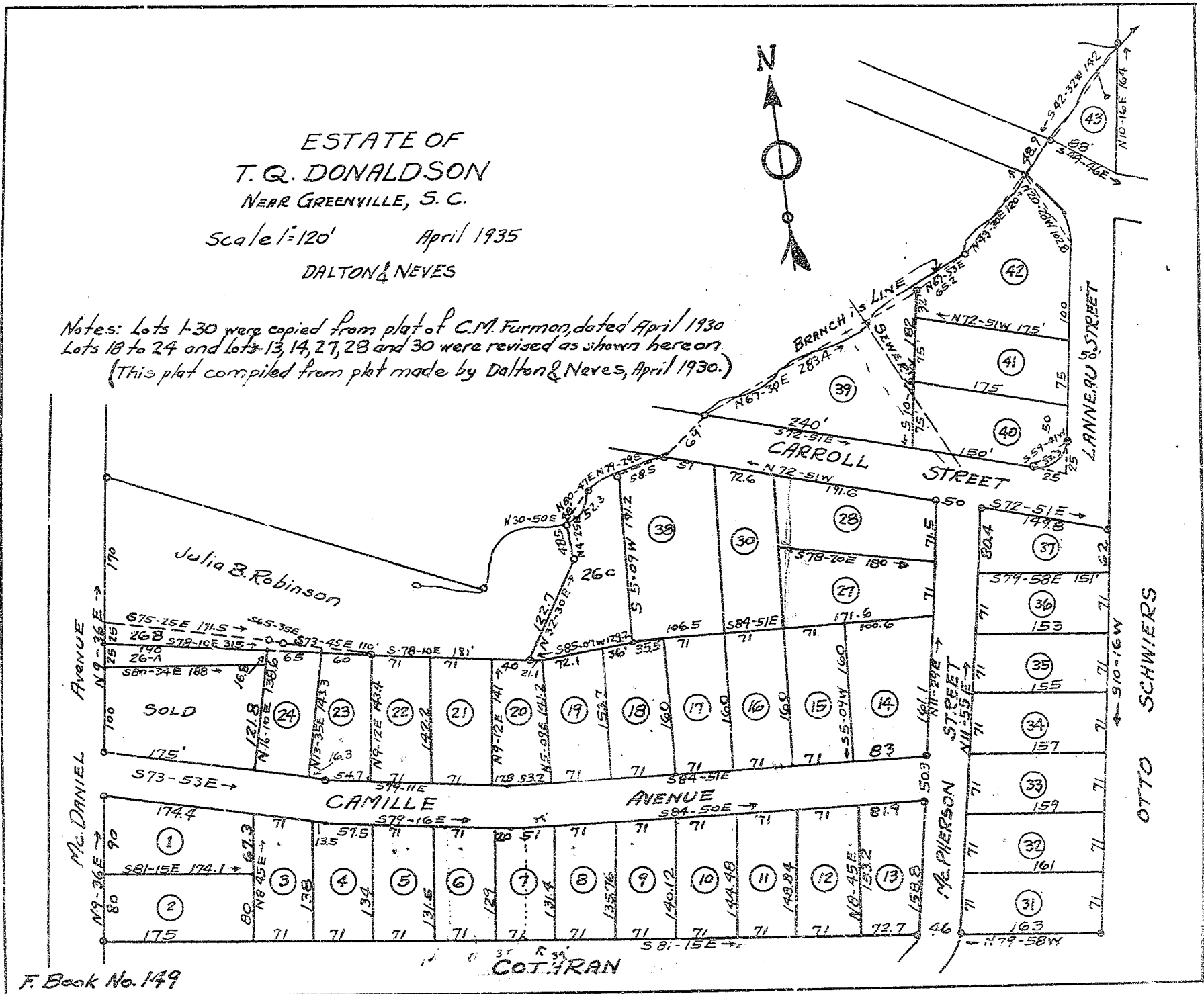


ESTATE OF  
T. Q. DONALDSON  
NEAR GREENVILLE, S. C.

Scale 1"=120' April 1935

DALTON & NEVES

Notes: Lots 1-30 were copied from plat of C.M. Furman, dated April 1930  
Lots 18 to 24 and lots 13, 14, 27, 28 and 30 were revised as shown hereon  
(This plat compiled from plat made by Dalton & Neves, April 1930.)



F. Book No. 149

COT. GRAN

FILED THIS ... DATE OF ...

AND RECORD ...

AT PAGE ...

...