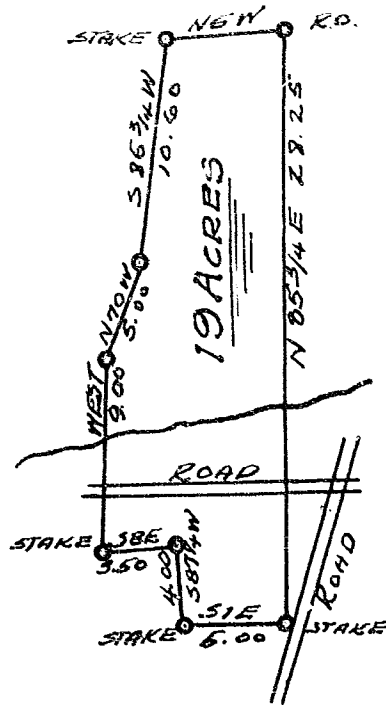


NORTH



## STATE OF S.C. GREENVILLE COUNTY

THE ABOVE PLAT REPRESENTS  
 LOT #1 IN THE DIVISION OF  
 THE WILLIAM COX ESTATE  
 (HOME PLACE) DEEDED TO  
 SARAH ANN COX AND HAS  
 SUCH MARKS AND BOUNDS AS  
 THE ABOVE PLAT REPRESENTS.  
 SURVEYED MAY 1ST 1895.

B. F. Neves.

3/12/35 BY B.F.M.J. MAP 12-35 #2721

