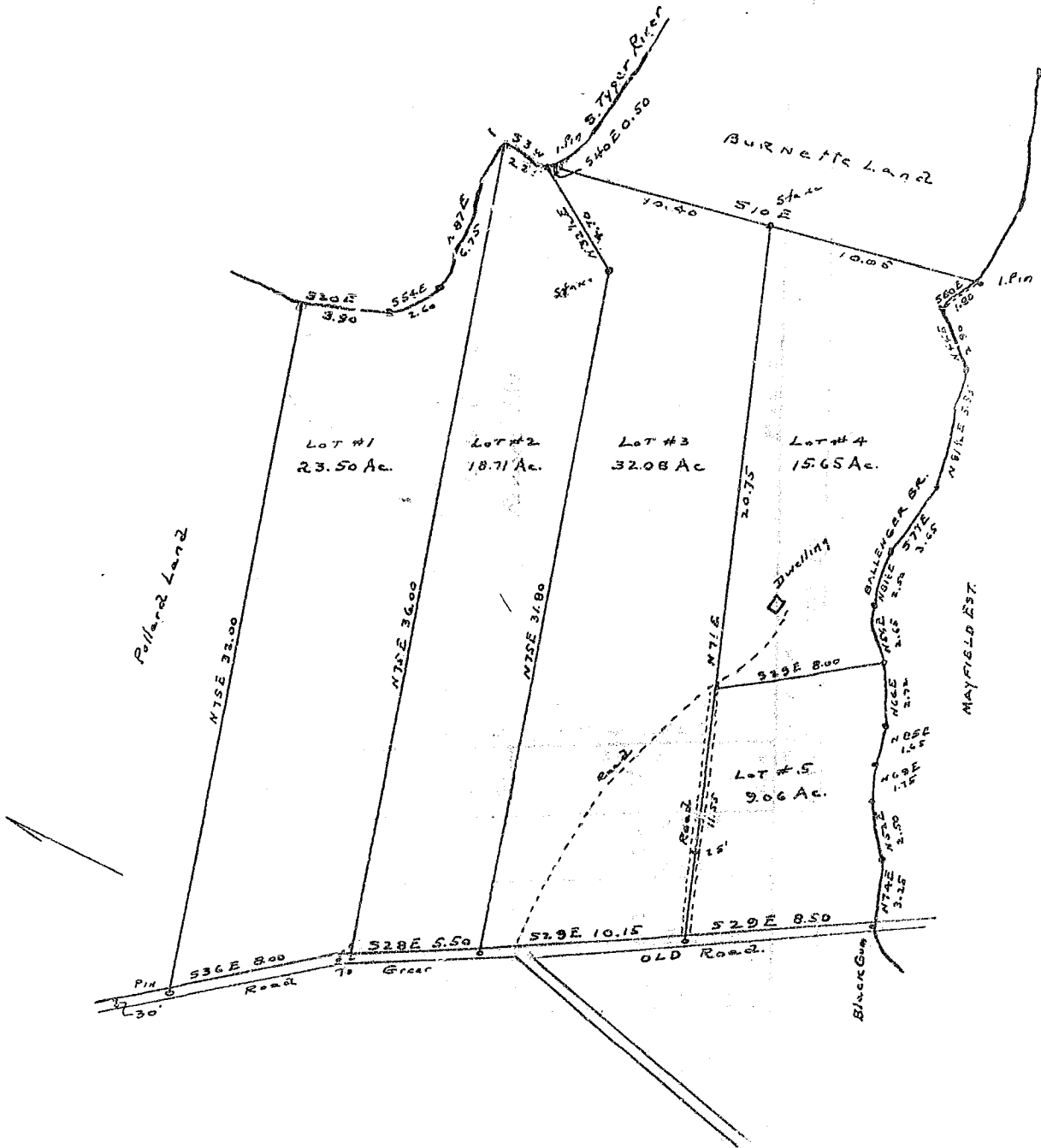


# Plat Book H-Page 232

232

THE ESTATE  
 OF  
 W. E. MORROW  
 GREENVILLE COUNTY  
 NEAR GREER  
 SURVEYED AND PLATTED FEB 7-9 1934  
 Scale 1" = 5 CHAINS W. E. MORROW



March 1934  
 H. J. [unclear]  
 232  
 Ira A. Gresham  
 F30521