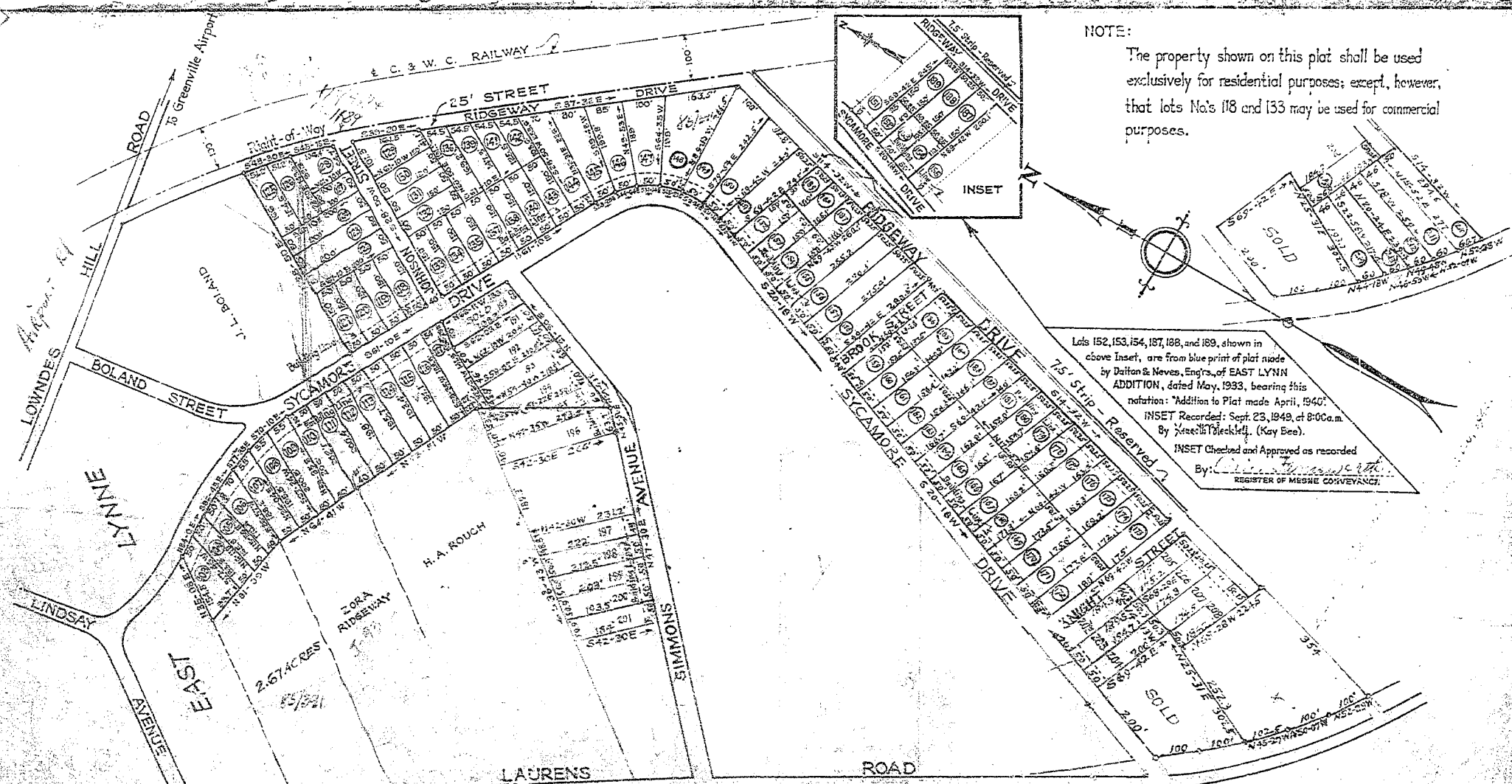


# Plat Book-H-Page 2/20



NOTE:  
The property shown on this plat shall be used exclusively for residential purposes; except, however, that lots No's 118 and 133 may be used for commercial purposes.

Lots 152, 153, 154, 187, 188, and 189, shown in above Inset, are from blue print of plat made by Dutton & Neves, Engrs., of EAST LYNN ADDITION, dated May, 1933, bearing this notation: "Addition to Plat made April, 1940".  
INSET Recorded: Sept. 23, 1949, at 8:00 a.m.  
By *Wesley T. Heckler*, (Kay Bee).  
INSET Checked and Approved as recorded  
By *Wesley T. Heckler*,  
REGISTER OF MORTGAGE CONVEYANCES

*Lines & Figures in Green  
Added July 28th, 1939*

## EAST LYNNE ADDITION

LAURENS ROAD

GREENVILLE COUNTY, S.C.

Scale: 1"=200'

May, 1933

DUTTON & NEVES, ENGINEERS

DAD COPY