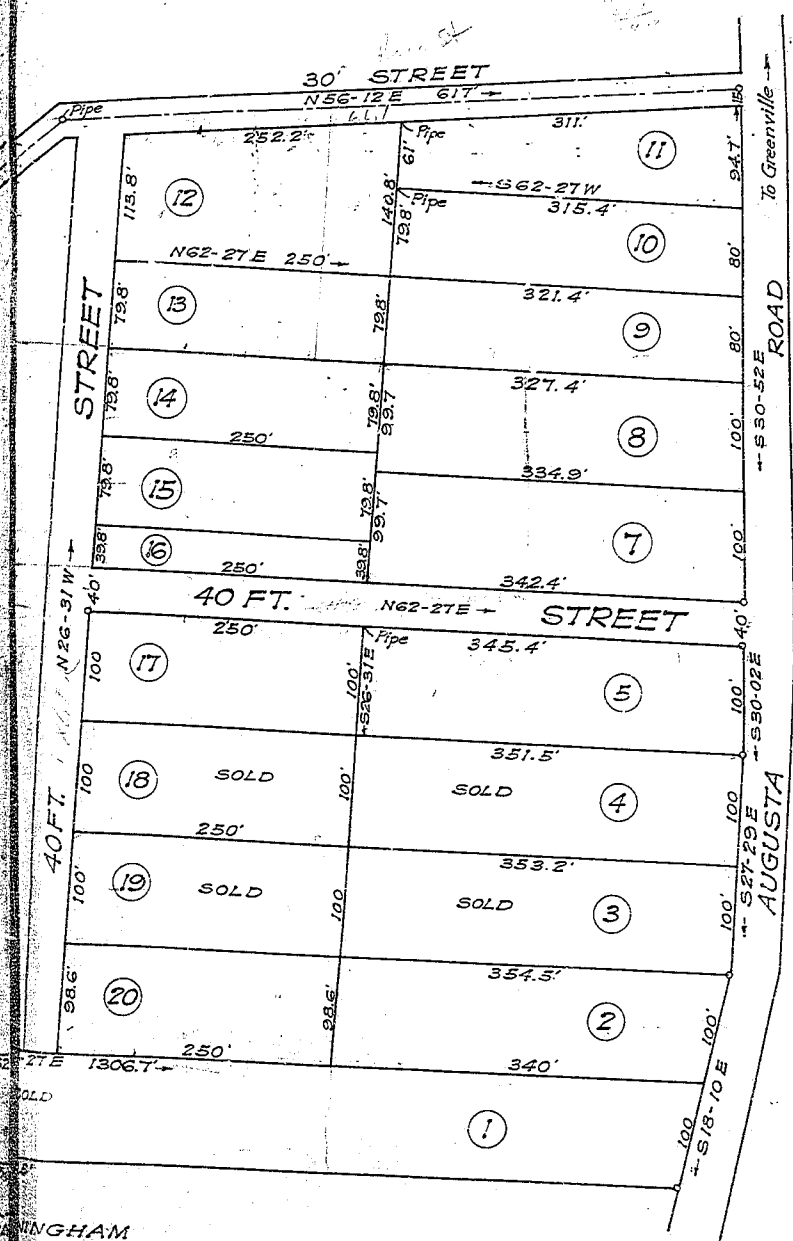
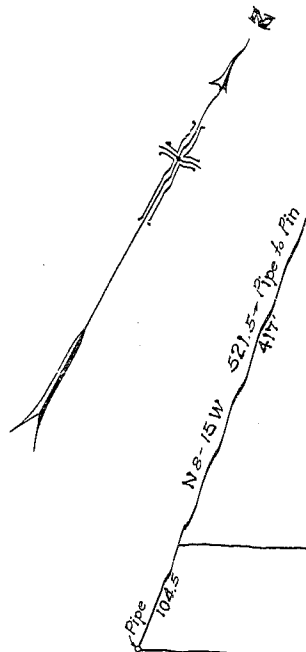


PROPERTY OF
G. L. WALKER
GREENVILLE CO. S.C.

Scale 1"=100' Sept. 1922

R. E. DALTON ENGR.



G. E. CUNNINGHAM

Iron Pipes at all Corners of Lots fronting Augusta Road
and on Lots immediately in rear fronting 40' Street

471.4
1200
471.4
1200
571.8