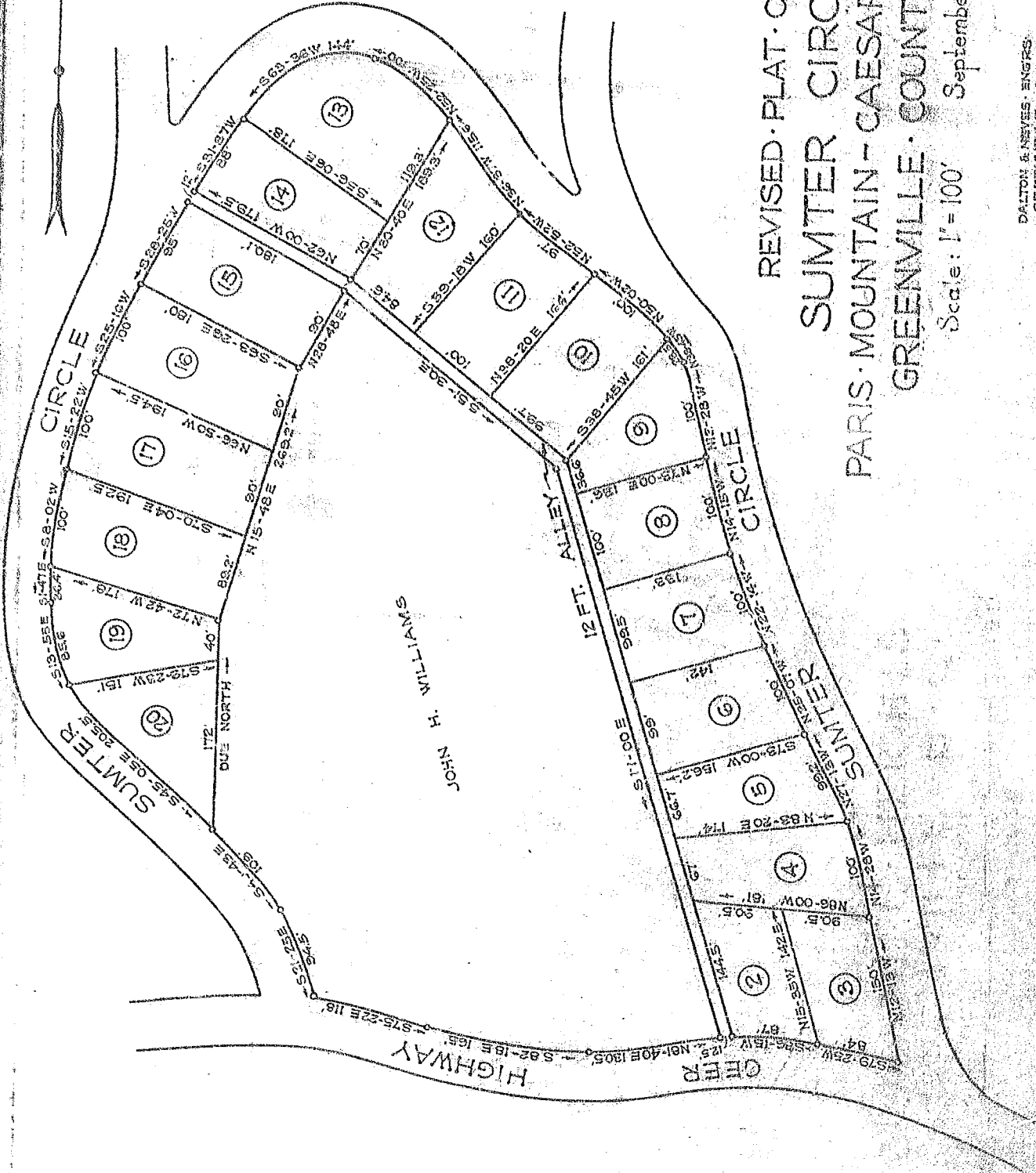




REVISED PLAT OF
SUMTER CIRCLE
PARIS MOUNTAIN - CAESARS HEAD CO.
GREENVILLE COUNTY S.C.

Scale: 1" = 100' September, 1928

DALTON & NEVES, ENGRS.
GREENVILLE, S.C.



Recorded September 15, 1928 by Kitty Bee



TEN

Books 116, 117 & 118 of Concessions No. 23