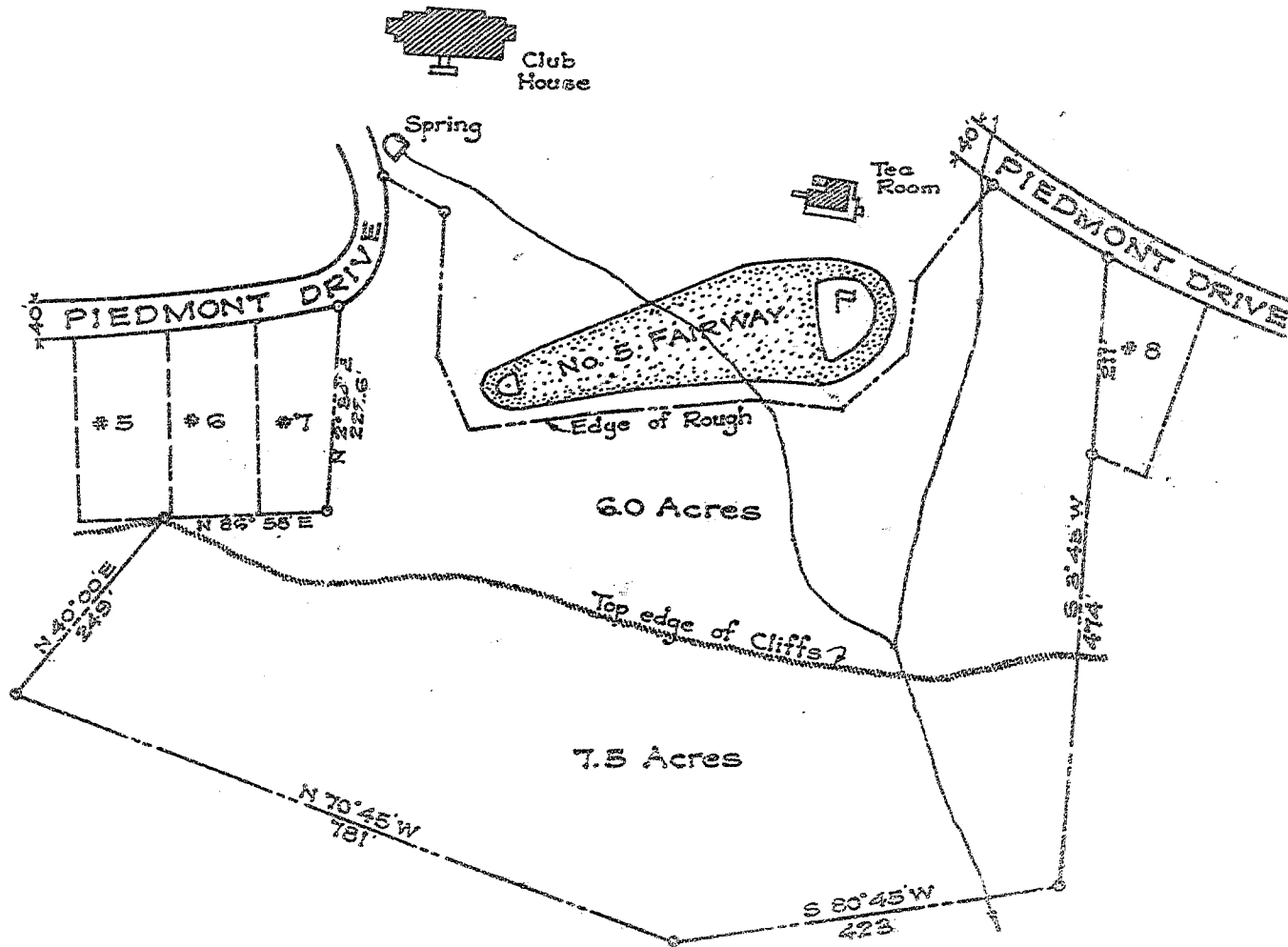


Note: o Indicates an Iron Pin.

VILLA SITE No. 'C'

151

April 1927  
Scale 1" = 200'



Plot Showing  
VILLA SITE - No. 'C'  
HOG BACK MOUNTAIN SECTION  
BLUE RIDGE FOREST

Surveyed by  
Wm. S. Hartley, Engineer,  
Carolina Mts. Inc.

CAROLINA MOUNTAINS, INC.  
TRYON, N.C.  
OWNERS & DEVELOPERS

Recorded July 8, 1927 at 11:20 a.m. by [unclear]