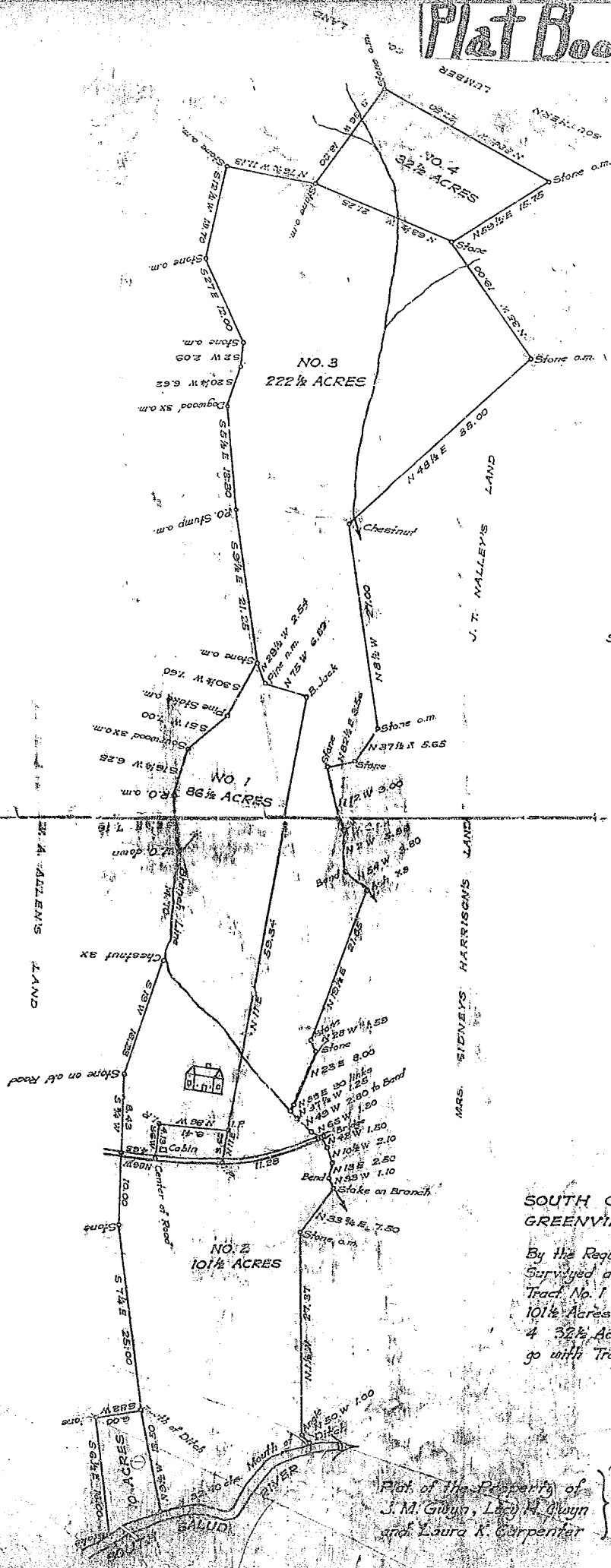


Recorded June 24, 1927 by Kay Doe



SCALE OF 10 CHS. TO 1 INCH

**SOUTH CAROLINA
GREENVILLE COUNTY**

By the Request of the commissioners in charge, I have surveyed and changed Tract no. 1 and 2 as they advised. Tract No. 1 contains 86 1/2 Acres Tract no. 2 contains 10 1/2 Acres. Tract no. 3 contains 222 1/2 Acres No. 4 32 1/2 Acres. The 10 Acre Piece on the River to go with Tract No. 1 which makes 96 1/2 Acres.

Surveyed Jan. 17, 1924
W.A. Heston, Licensed Surveyor

- W.T. Henderson
- R.E. Benson
- Henry Bolton
- H.J. Southan
- E.C. Stroud

Commissioners

Plat of the Property of
J. M. Guyn, Lucy M. Guyn
and Laura K. Carpenter