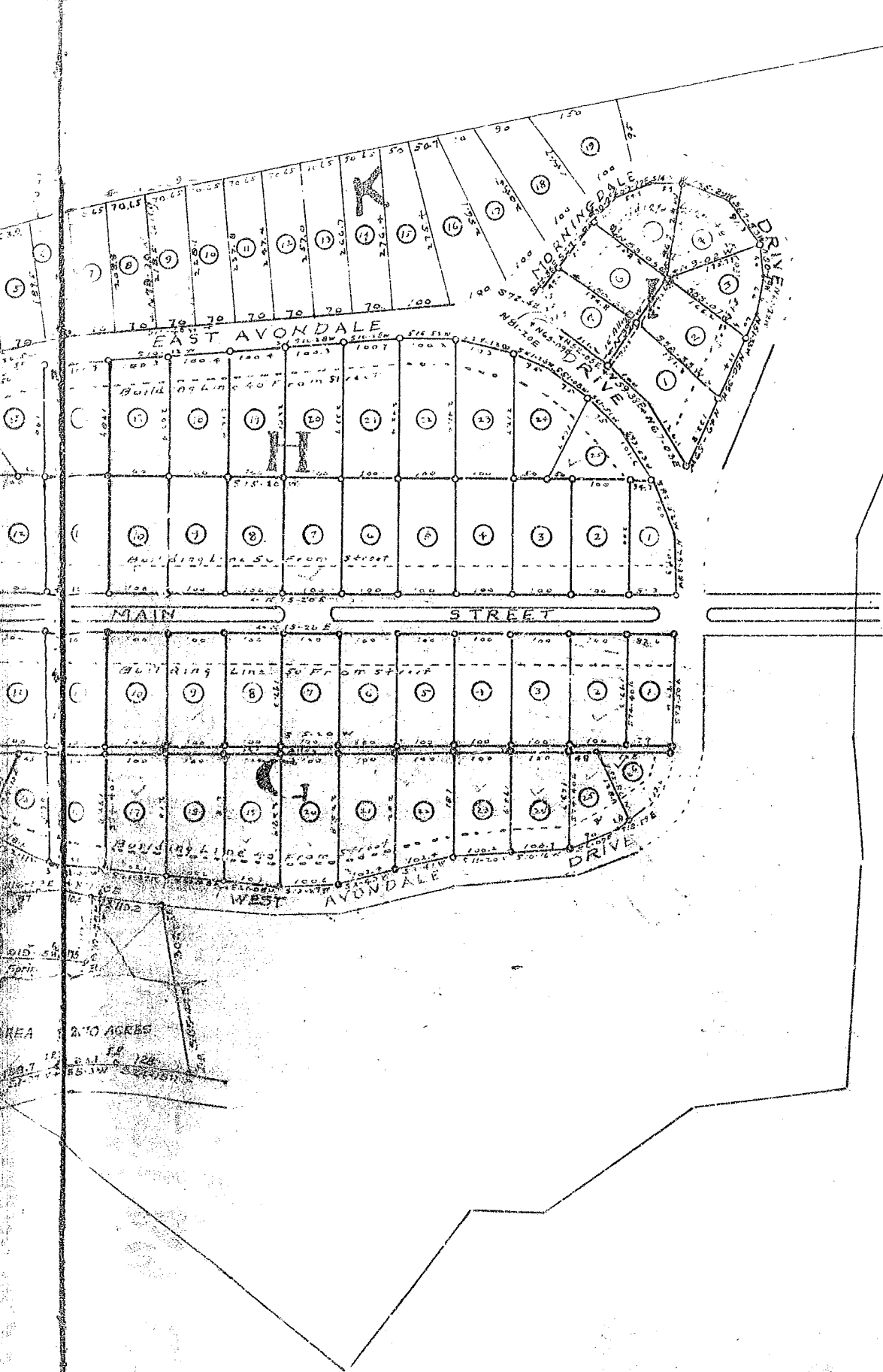


Line between lots 213 changed
Jan 10, 1928. C.M. Freeman Jr.

Note - Strip From lot #2 added to
lot #11 Blk A Nov 1 1927
C.M. Freeman Jr.

Addition to Plat, on west side Waveranda Drive
and west side Parkside Drive made Oct 1931
by R.E.D.

NOTE - ABOVE REVISED FROM
PLAT MADE BY G.A. SCHULTZE.
LOTS ONLY RESURVEYED,
STREETS AND OUTSIDE PROP-
ERTY LINES TRACED.
SURVEYED AND TRACED BY W.M. RAST
EASEMENT OF 2 FT ON REAR
OF EACH LOT FOR SEWER, ELEC-
TRIC LIGHT POLES ETC.
W.M. RAST, JR., ENG. JUNE 1935



Note: 16' ALLEY cut in Block I
 Sep 1, 1927
 C.M. Durman Jr.

AREA 2.10 ACRES
 10.7 2.10 120
 55.1W 55.1W