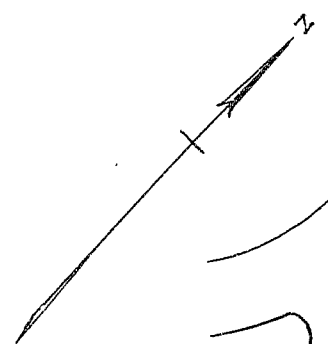
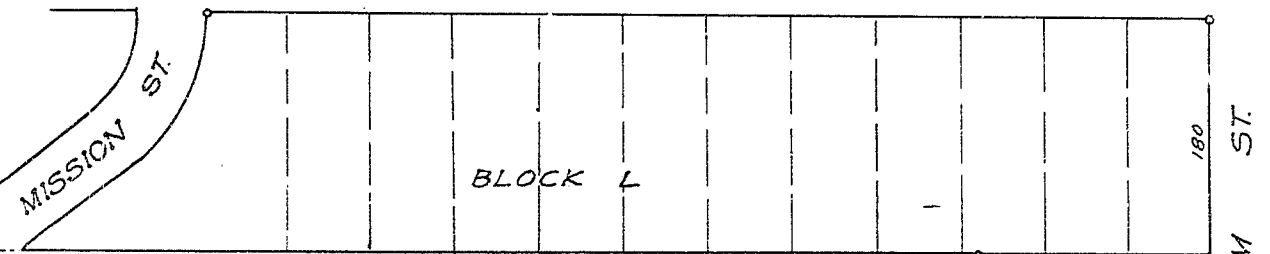


PART ESTATE OF
 O. P. MILLS
 GREENVILLE CO. S. C.
 Scale 1" = 100' - May 1924.

R. E. DALTON - ENGR.



PRENTISS AVE.



BLOCK L

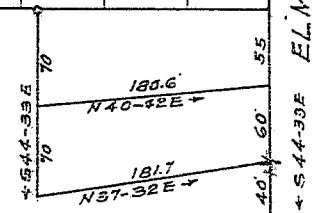
H45-27E. 795'

BLK L

See Plat of 1/16/24

Arden Ave.

See Plat of 1/16/24
 BLK O



ELM ST.

KIM STREET

ROAD

GROVE

Recorded May 1924 by R.E.D.

PART OF...