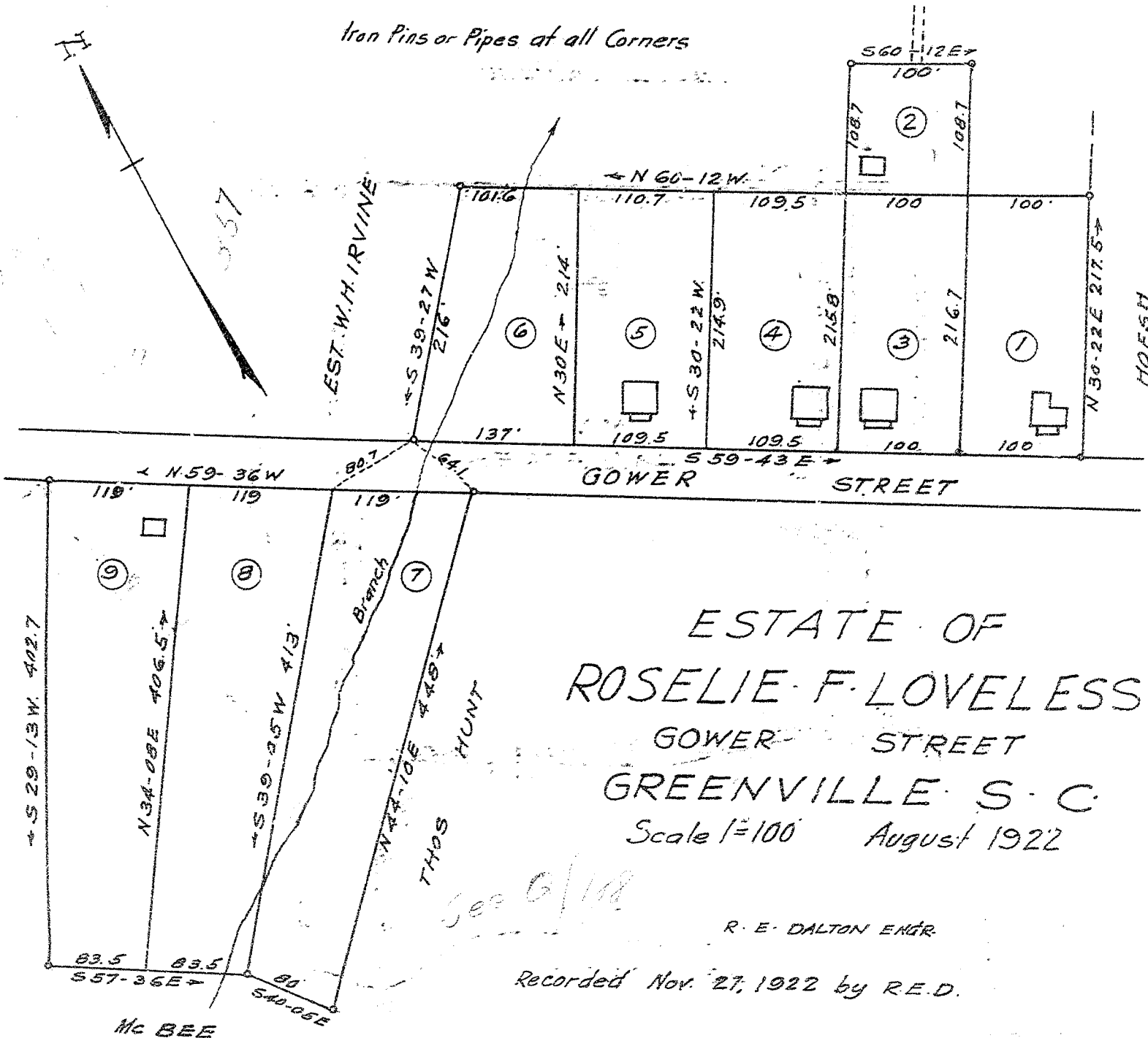


Iron Pins or Pipes at all Corners



ESTATE OF  
 ROSELIE F. LOVELESS  
 GOWER STREET  
 GREENVILLE S. C.  
 Scale 1"=100 August 1922

R. E. DALTON ENGR.

Recorded Nov. 27, 1922 by R. E. D.

See G/118

MRS VAUGHAN

Mc BEE

THOS HUNT

Branch

HOESCH

EST. W. H. IRVINE

357

