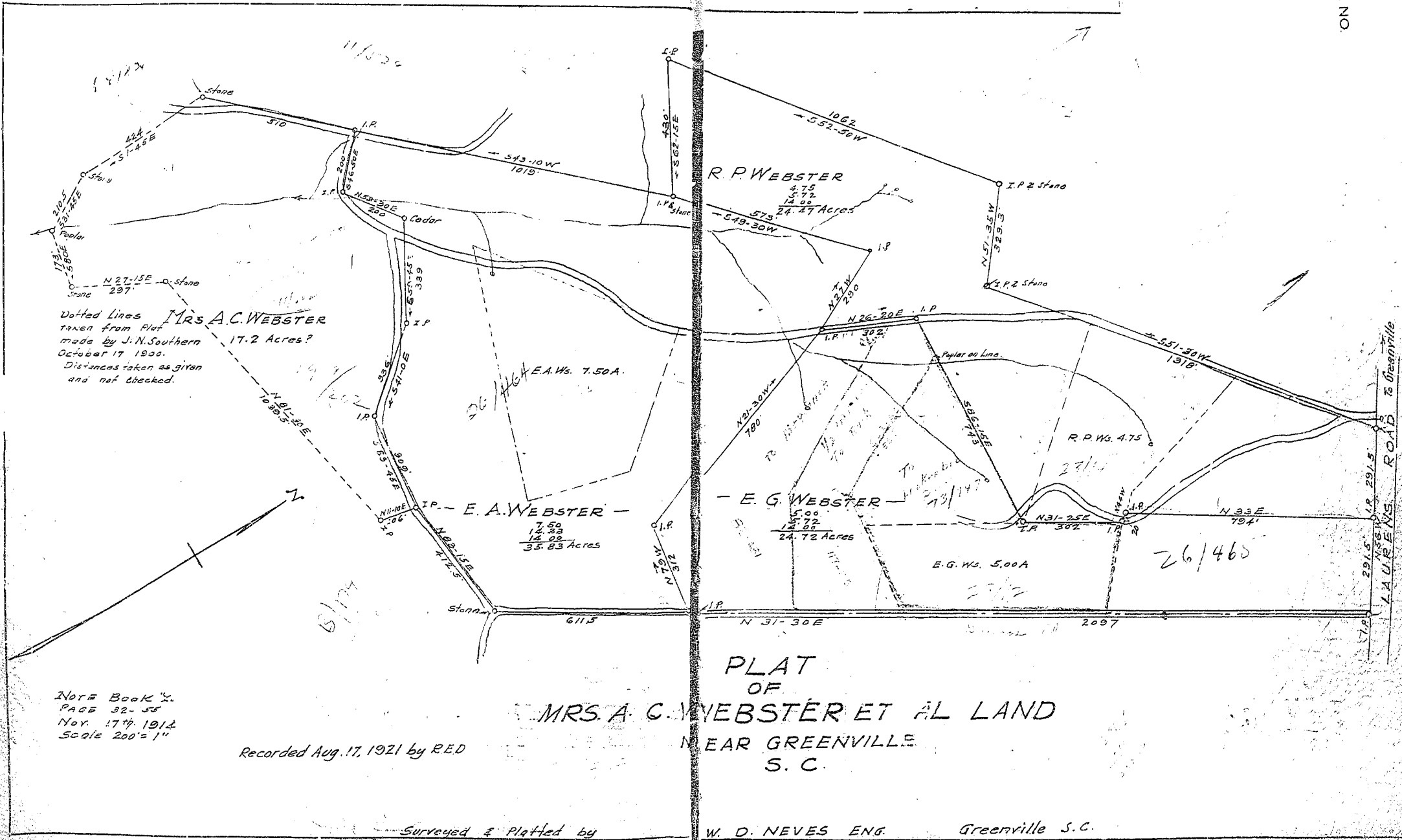


VS.



Dotted Lines  
taken from Plat  
made by J.N. Southern  
October 17 1900.  
Distances taken as given  
and not checked.

**MRS. A.C. WEBSTER**  
17.2 Acres?

26/464 E.A. Ws. 7.50 A.

**R. P. WEBSTER**  
4.75  
5.72  
14.00  
24.47 Acres

**E. A. WEBSTER**  
7.50  
14.33  
14.00  
35.83 Acres

**E. G. WEBSTER**  
5.00  
14.00  
24.72 Acres

E.G. Ws. 5.00 A

26/465

NOTE BOOK 2.  
PAGE 32-55  
Nov. 17<sup>th</sup> 1914  
Scale 200' = 1"

Recorded Aug. 17, 1921 by RED

PLAT  
OF  
**MRS. A. C. WEBSTER ET AL LAND**  
NEAR GREENVILLE  
S. C.

Surveyed & Platted by

W. D. NEVES ENG.

Greenville S.C.

**BAD COPY**