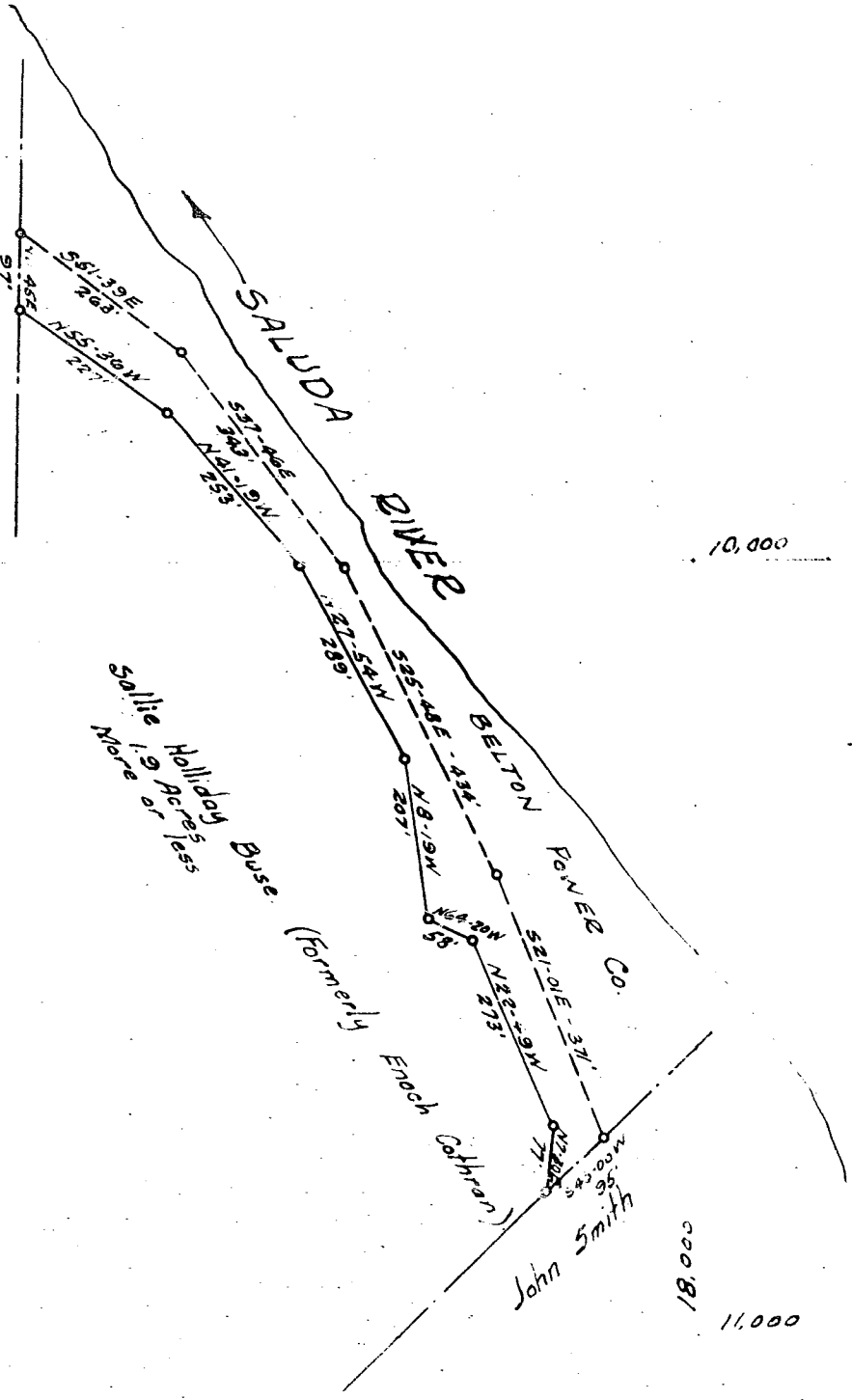


FARMERS BANK

FORMERLY
(Mrs. E.M. Holliday)



10,000

19,000

18,000

11,000

BELTON LIGHT & POWER COMPANY

Sallie Holliday Busc
Greenville County, S.C

Plot showing additional land wanted for
proposed flashboards on present dam at
Holliday's Bridge

Plot drawn July 1935 by J.E. Surrine & Co.
from General Map of Belton Power Co, Property
made by J.E. Surrine & Co. October 1930

Scale: 1" = 200'

9-9
C